

20G11NC2P1JA0NNNNN

Allen-Bradley PowerFlex 755 VSD 400V IP20 2.1A 0.75kW ND/
HD Frame 2



Component type	Frequency converter =< 1 kV
Range	PowerFlex 755
Model	N/A
Product status	Existing

Allen-Bradley PowerFlex 755 AC Drives are a simple and high-performance motor control application, providing a variety of solutions including pumps, fans, and conveyors. Featuring a standard built-in Ethernet/IP port, making it ideal for applications requiring flexibility, connectivity, control, advanced communications, hardware, and safety options.

ELECTRICAL

Number of phases input	3
Nominal input voltage	400 V
Nominal output power AC	0.75 kW
Nominal output current I2N	2.1 A
kW rating, normal duty	0.75 kW
kW rating, heavy duty	0.75 kW
Dynamic braking transistor	Yes
Control characteristic	PID
EMC-version	Yes

COMMUNICATION

Integrated motion function	No
Suitable for safety functions	Yes

CONSTRUCTION

Contains keypad	No
Frame size	2
IP rating	IP20
Degree of protection (NEMA)	Other

DIMENSIONS

Height	424.2 mm
Width	135 mm
Depth	212 mm
Weight	8 kg

ENVIRONMENT

Operating temperature	-20...60 °C
Storage temperature	-40...70 °C

20G11NC2P1JA0NNNNN

Allen-Bradley PowerFlex 755 VSD 400V IP20 2.1A 0.75kW ND/
HD Frame 2



LARGE DRIVES



Allen-Bradley

RELATED PRODUCTS

ACCESSORY



Item No: 1202C03

Required: No

Description: Allen-Bradley PowerFlex Scanprint Cable Male Male 300mm



Item No: 1202C10

Required: No

Description: Allen-Bradley PowerFlex Scanprint Cable Male Male 1m



Item No: 1202C90

Required: No

Description: Allen-Bradley PowerFlex PF 7 750 9m Extension Cable to suit 20 HIM C6S



Item No: 1202H03

Required: No

Description: Allen-Bradley PowerFlex Scanprint Cable Male Female 300mm



Item No: 1202H10

Required: No

Description: Allen-Bradley PowerFlex Scanprint Cable Male Female 1m



Item No: 1202H30

Required: No

Description: Allen-Bradley PowerFlex Scanprint Cable Male Female 3m



Item No: 1202H90

Required: No

Description: Allen-Bradley SMC-Flex 9M Extension Cable To Suit 20-HIM-C3S



Item No: 1203S03

Required: No

Description: Allen-Bradley PowerFlex and SMC Scanprint Splitter Cable Type



Item No: 1203USB

Required: No

Description: Allen-Bradley PowerFlex and SMC USB Interface for CCW Support PF Drives and SMC Soft Starters



Item No: 13213R2A

Required: No

Description: Allen-Bradley 1321 Line Reactor 3Phase Open IP00 2A 12.0mH



Item No: 13213R2B

Required: No

Description: Allen-Bradley 1321 Line Reactor 400 480V 3Phase IP20 2A 20mH



Item No: 1769SM1

Required: No

Description: Allen-Bradley CompactLogix 1769 DPI Scanport Module



Item No: 1786TPS

Required: No

Description: Allen-Bradley ControlNet Media RG6 Coaxial Straight T-tap



Item No: 207501132C2R

Required: No

Description: Allen-Bradley PowerFlex 750 VSD 24V DC 11 Series IO Module 1AI 1AO 3DI and 2RO



Item No: 2075020COMM

Required: No

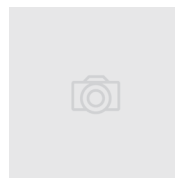
Description: Allen-Bradley PowerFlex 750 VSD Comm Carrier



Item No: 207502262C2R

Required: No

Description: Allen-Bradley PowerFlex 750 VSD 24V DC 22 Series IO Module 2AI 2AO 6DI and 2RO



Item No: 207502262D2R

Required: No

Description: Allen-Bradley PowerFlex 750 VSD 115V AC IO Card



Item No: 207502263C1R2T

Required: No

Description: Allen-Bradley PowerFlex 750 VSD 24V DC 22 Series IO Module 2AI 2AO 6DI 1RO and 2TO

20G11NC2P1JA0NNNNN

Allen-Bradley PowerFlex 755 VSD 400V IP20 2.1A 0.75kW ND/
HD Frame 2



LARGE DRIVES



Allen-Bradley

RELATED PRODUCTS

ACCESSORY



Item No: 20750APS
Required: No
Description: Allen-Bradley PowerFlex 750 VSD 24V DC Auxiliary Power Supply Module



Item No: 20750ATEX
Required: No
Description: Allen-Bradley PowerFlex 750 VSD Thermistor Input Module Req 11 Series IO Module



Item No: 20750BNETIP
Required: No
Description: Allen-Bradley PowerFlex 750 VSD BACnet IP Communication Module



Item No: 20750CNETC
Required: No
Description: Allen-Bradley PowerFlex 750 VSD Coaxial ControlNet Communication Module



Item No: 20750DENC1
Required: No
Description: Allen-Bradley PowerFlex 750 VSD Dual Incremental Encoder Module



Item No: 20750DNET
Required: No
Description: Allen-Bradley PowerFlex 750 VSD DeviceNet Communication Module



Item No: 20750EMC1F2
Required: No
Description: Allen-Bradley PowerFlex 750 VSD EMC Plate with Core Frame 2



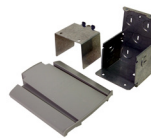
Item No: 20750ENC1
Required: No
Description: Allen-Bradley PowerFlex 750 VSD Incremental Encoder Module



Item No: 20750ENETR
Required: No
Description: Allen-Bradley PowerFlex 750 VSD Dual Port EtherNet IP Communication Module



Item No: 20750FLNG1F2
Required: No
Description: Allen-Bradley PowerFlex 750 VSD IP20 Front Back Flange Mount Kit Frame 2



Item No: 20750NEMA1F2
Required: No
Description: Allen-Bradley PowerFlex 750 VSD IP30 Conversion Kit Frame 2



Item No: 20750PBUS
Required: No
Description: Allen-Bradley PowerFlex 750 VSD Profibus DPV1 Communication Module



Item No: 20750PNET
Required: No
Description: Allen-Bradley PowerFlex 750 VSD Single Port Profinet IO Communication Module



Item No: 20750PNET2P
Required: No
Description: Allen-Bradley PowerFlex 750 VSD Dual Port Profinet IO Communication Module



Item No: 20750S
Required: No
Description: Allen-Bradley PowerFlex 750 VSD Safe Torque Off Module



Item No: 20750S1
Required: No
Description: Allen-Bradley PowerFlex 750 VSD Safe Speed Monitor Module



Item No: 20750S3
Required: No
Description: Allen-Bradley PowerFlex 755 VSD Network Safe Torque Off Module



Item No: 20750S4
Required: No
Description: Allen-Bradley PowerFlex 755 VSD Network Integrated Safety Functions Option

20G11NC2P1JA0NNNNN

Allen-Bradley PowerFlex 755 VSD 400V IP20 2.1A 0.75kW ND/
HD Frame 2



LARGE DRIVES



RELATED PRODUCTS

ACCESSORY



Item No: 20750UFB1

Required: No

Description: Allen-Bradley PowerFlex 750 VSD Universal Feedback Encoder Module



Item No: 20COMMC

Required: No

Description: Allen-Bradley PowerFlex VSD Coaxial ControlNet Communication Module



Item No: 20COMMD

Required: No

Description: Allen-Bradley PowerFlex VSD DeviceNet Communication Module



Item No: 20COMME

Required: No

Description: Allen-Bradley PowerFlex VSD Single Port EtherNet IP Communication Module



Item No: 20COMMH

Required: No

Description: Allen-Bradley PowerFlex VSD RS485 HVAC to DPI Communication Adaptor



Item No: 20COMMM

Required: No

Description: Allen-Bradley PowerFlex VSD Modbus TCP Communication Module



Item No: 20HIMA0

Required: No

Description: Allen-Bradley PowerFlex VSD Mount Blank Plate



Item No: 20HIMA6

Required: No

Description: Allen-Bradley PowerFlex VSD Mount LCD Display and Programmer



Item No: 20HIMB1

Required: No

Description: Allen-Bradley PowerFlex VSD Programmer Panel Mount Bezel Kit



Item No: 20HIMC6S

Required: No

Description: Allen-Bradley PowerFlex VSD Remote Panel Mount IP66 LCD Display and Programmer including 3m Cable



Item No: 20HIMH10

Required: No

Description: Allen-Bradley PowerFlex VSD Remote Programmer Cable 1m



Item No: 20XCOMMCP1

Required: No

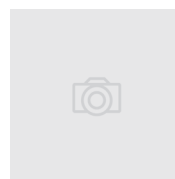
Description: Allen-Bradley PowerFlex VSD External DPI Comm AC Power Supply



Item No: 20XCOMMDCBASE

Required: No

Description: Allen-Bradley PowerFlex VSD External Comm Kit DC Base



Item No: 20XCOMMIOOPT1

Required: No

Description: Allen-Bradley PowerFlex VSD External DPI Comm IO Option 1