

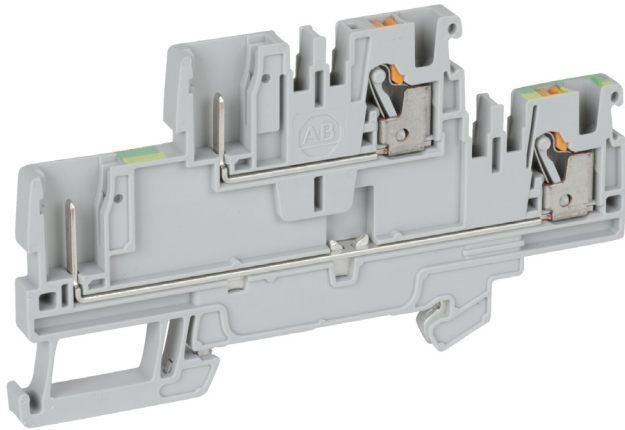
# 1492PDG32P

Allen-Bradley 1492-P Push-in Terminal Plug-in 2.5mm 2 Level  
Ground 4 CON Entries Green Yellow



Allen-Bradley

<b>Component type</b>	Ground terminal block
<b>Range</b>	1492P
<b>Model</b>	N/A
<b>Product status</b>	Existing



The Allen-Bradley 1492-P range of Push-in Terminal Blocks are reliable, safe and straightforward electrical connections designed for advanced wiring management. With cross-sectional wire sizes from 1.5mm<sup>2</sup> to 16mm<sup>2</sup> and various terminal types such as feed-through, disconnect, fused and plug-in. Available in single and multi-level housing with a wide range of accessories enabling quick installation.

<b>ELECTRICAL</b>	Type of electrical connection 1	Push-in clamp connection
<b>CONSTRUCTION</b>	Colour	Green/yellow
	Mounting method	DIN rail (top hat rail) 35 mm
	Number of levels	2
<b>DIMENSIONS</b>	Height	50.5 mm
	Depth	91 mm
	Width	5.1 mm

## RELATED PRODUCTS

### ACCESSORY

- 

**Item No:** 1492CJP310  
**Required:** No  
**Description:** Allen-Bradley 1492-P Centre Jumper Orange 10 Pole for 2.5mm Push-in Terminal
- 

**Item No:** 1492CJP32  
**Required:** No  
**Description:** Allen-Bradley 1492-P Centre Jumper Orange 2 Pole for 2.5mm Push-in Terminal
- 

**Item No:** 1492CJP30  
**Required:** No  
**Description:** Allen-Bradley 1492-P Centre Jumper Orange 20 Pole for 2.5mm Push-in Terminal

- 

**Item No:** 1492CJP33  
**Required:** No  
**Description:** Allen-Bradley 1492-P Centre Jumper Orange 3 Pole for 2.5mm Push-in Terminal
- 

**Item No:** 1492CJP34  
**Required:** No  
**Description:** Allen-Bradley 1492-P Centre Jumper Orange 4 Pole for 2.5mm Push-in Terminal
- 

**Item No:** 1492CJP35  
**Required:** No  
**Description:** Allen-Bradley 1492-P Centre Jumper Orange 5 Pole for 2.5mm Push-in Terminal

# 1492PDG32P

Allen-Bradley 1492-P Push-in Terminal Plug-in 2.5mm 2 Level  
Ground 4 CON Entries Green Yellow



Allen-Bradley

## RELATED PRODUCTS

### ACCESSORY



**Item No:** 1492CJP35

**Required:** No

**Description:** Allen-Bradley 1492-P Centre Jumper Orange 50 Pole for 2.5mm Push-in Terminal



**Item No:** 1492CJP36

**Required:** No

**Description:** Allen-Bradley 1492-P Centre Jumper Orange 6 Pole for 2.5mm Push-in Terminal



**Item No:** 1492CJP37

**Required:** No

**Description:** Allen-Bradley 1492-P Centre Jumper Orange 7 Pole for 2.5mm Push-in Terminal



**Item No:** 1492CJP39

**Required:** No

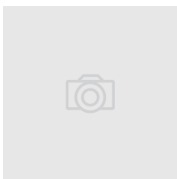
**Description:** Allen-Bradley 1492-P Centre Jumper Orange 9 Pole for 2.5mm Push-in Terminal



**Item No:** 1492DR5

**Required:** No

**Description:** Allen-Bradley 1492 DIN Rail 35 x 7.5mm Copper Free Aluminium 1m



**Item No:** 1492EAHJ35

**Required:** No

**Description:** Allen-Bradley 1492-J Heavy Duty End Anchor for 1492 J



**Item No:** 1492EAJ35

**Required:** No

**Description:** Allen-Bradley 1492-J End Anchor for 1492 J



**Item No:** 1492EAP35

**Required:** No

**Description:** Allen-Bradley 1492-P End Anchor Screw Standard Duty Grey



**Item No:** 1492EBPD3

**Required:** No

**Description:** Allen-Bradley 1492-P End Plate Grey for Push-in Terminal 1492PD3



**Item No:** 1492EBPD3B

**Required:** No

**Description:** Allen-Bradley 1492-P End Plate Blue for Push-in Terminal 1492PD3



**Item No:** 1492ERL35

**Required:** No

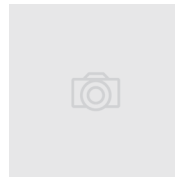
**Description:** Allen-Bradley 1492 End Anchor



**Item No:** 1492MR5X8

**Required:** No

**Description:** Allen-Bradley 1492-M Marker Card Snap In 5 x 8mm Linked 120 Tags No Text



**Item No:** 1492MT5X8

**Required:** No

**Description:** Allen-Bradley 1492-M Marker Card Snap In 5 x 8mm 800 Markers Per Roll



**Item No:** 1492P3ESTP

**Required:** No

**Description:** Allen-Bradley 1492-P Flexible Plug-in End Plug for Push-in 2.5mm Terminal Block Grey



**Item No:** 1492P3ESTPB

**Required:** No

**Description:** Allen-Bradley 1492-P Flexible Plug-in End Plug for Push-in 2.5mm Terminal Block Blue



**Item No:** 1492P3ESTPG

**Required:** No

**Description:** Allen-Bradley 1492-P Flexible Plug-in End Plug for Push-in 2.5mm Terminal Block Green



**Item No:** 1492P3MSTP

**Required:** No

**Description:** Allen-Bradley 1492-P Middle Flexible Plug for Push-in 2.5mm Terminal Block Grey



**Item No:** 1492P3MSTPB

**Required:** No

**Description:** Allen-Bradley 1492-P Middle Flexible Plug for Push-in 2.5mm Terminal Block Blue

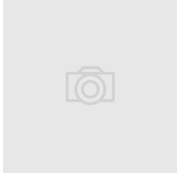
# 1492PDG32P

Allen-Bradley 1492-P Push-in Terminal Plug-in 2.5mm 2 Level  
Ground 4 CON Entries Green Yellow



## RELATED PRODUCTS

### ACCESSORY



**Item No:** 1492P3MSTPG

**Required:** No

**Description:** Allen-Bradley 1492-P Middle Flexible Plug for Push-in 2.5mm Terminal Block Green

**Item No:** 1492P3SSTP

**Required:** No

**Description:** Allen-Bradley 1492-P Start Flexible Plug for Push-in 2.5mm Terminal Block Grey

**Item No:** 1492P3SSTPB

**Required:** No

**Description:** Allen-Bradley 1492-P Start Flexible Plug for Push-in 2.5mm Terminal Block Blue



**Item No:** 1492P3SSTPG

**Required:** No

**Description:** Allen-Bradley 1492-P Start Flexible Plug for Push-in 2.5mm Terminal Block Green

**Item No:** 1492P3STPCE

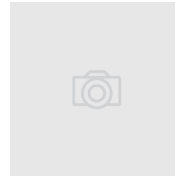
**Required:** No

**Description:** Allen-Bradley 1492-P Flexible Plug-in Accessory 2.5mm Coding Element Grey

**Item No:** 1492P3STPEB

**Required:** No

**Description:** Allen-Bradley 1492-P Flexible Plug In Accessory 2.5mm End Barrier Grey



**Item No:** 1492P3STPPC

**Required:** No

**Description:** Allen-Bradley 1492-P Flexible Plug-in Accessory 2.5mm Plug Cover