

Hygienic design stainless steel wall mount enclosures

Reliable protection for valuable
equipment in hygienically clean
environments



 nhp.com.au | nhpnz.co.nz

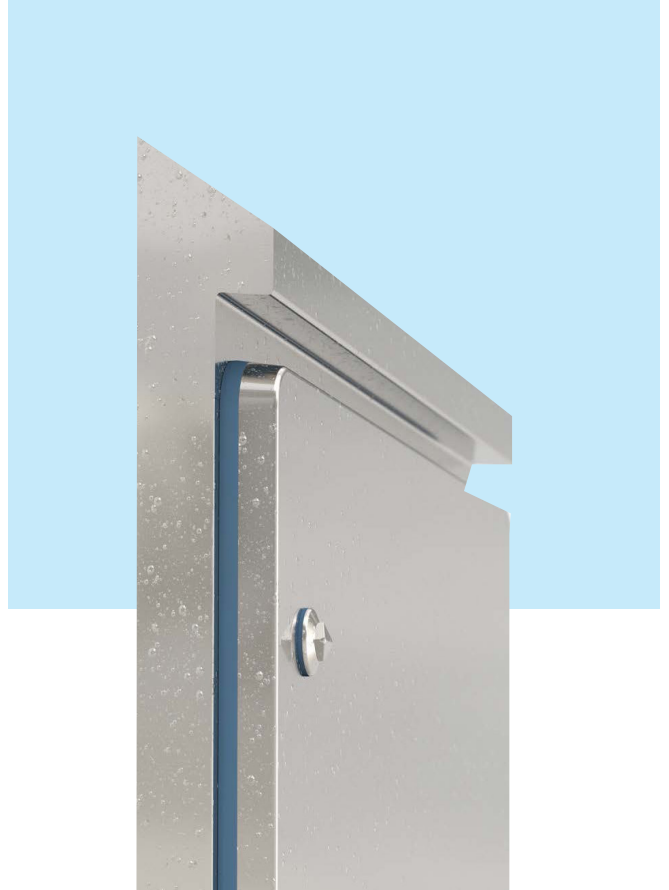
 1300 647 647 | 0800 647 647

 nhpsales@nhp.com.au | sales@nhp-nz.com

nVent HOFFMAN hygienic design stainless steel wall mount HDW enclosures are ideally suited to the food and beverage industry.

Strict hygiene standards are critical in the food and beverage industry to ensure that products are safe for human consumption and free from contaminants such as bacteria, viruses, parasites and moulds, as well as chemical residues from any cleaning. Electrical equipment installed in designated clean areas must meet stringent hygienic design guidelines. In particular, equipment should be inherently self-draining so that food product, water or any other liquids cannot accumulate, pool or condense on the equipment.

There should be no crevices, gaps or other recesses where bacteria containing biofilm, viruses or moulds can lodge, survive and grow – this applies equally to equipment which does not come in physical contact with the foodstuffs being produced or processed. The nVent HOFFMAN HDW wall mount enclosure range has been designed to meet these challenges.

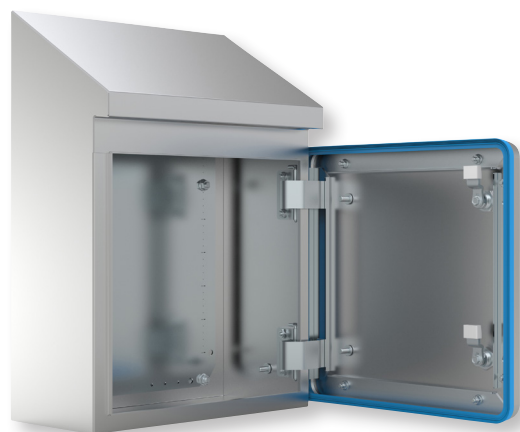


Hygienic design

- IP66 and IP69K ingress protection certified according to IEC 60529, for high temperature, high pressure wash-down applications
- Complies with Hygienic Design principles as per 2006/42/EC, EN 1672-2 and EN 14159
- EHEDG certified according to guidelines 8 and 13
- IK08 impact resistance rating according to IEC 62262
- 30° sloped roof allows liquids to self-drain
- 30mm overhang over front door prevents liquid dripping on to front door seal
- 8° slope on door sides ensures door is also self-draining
- One-piece silicone gasket provides a continuous seal between enclosure body and door
- Gasket dyed blue to clearly distinguish it from foodstuffs
- Smart door hinges hidden inside the enclosure when locked
- Special self-draining door lock

Innovative features

- Gasket is removable for periodic maintenance and is easily replaceable
- No pre-drilled mounting holes or gland plates, so bacteria cannot accumulate
- Easy to clean by hosing down in food and beverage applications
- Optional depth-adjustment bolts for mounting flexibility
- Door can be reversed for left-opening (no machining required)
- Eight standard sizes accommodate majority of common applications



Ordering information - HDW enclosures

Enclosures Dimensions (mm)				Weight (kg)	Mounting plate width (mm)	Mounting plate height (mm)	Max. usable depth (mm)	Number of door locks	Catalogue no.
Front H	Rear H	W	D						
350	442	220	155	8.1	160	350	137	1	HDW0442215
430	552	390	210	16.2	330	430	192	2	HDW0553921
430	552	810	210	33.5	750	430	192	2	HDW0558121
430	605	610	300	26.5	550	430	282	2	HDW0606130
550	672	510	210	23.8	450	550	192	2	HDW0675121
650	772	390	210	21.9	330	650	192	2	HDW0773921
650	772	610	210	31.1	550	650	192	2	HDW0776121
650	825	810	300	45.5	750	650	282	2	HDW0828130
1050	1225	810	300	64.9	750	1050	282	3	HDW1228130
1250	1425	810	300	74.7	750	1250	282	3	HDW1428130

Ordering information - HDW accessories

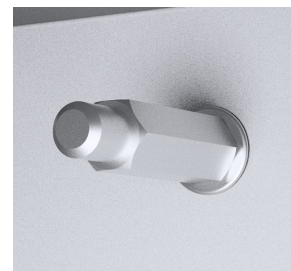


Depth adjustment bolts	Wall mount brackets - 50mm	Wall mount brackets - 300mm	Levelling feet	Interior mounting	Fan cover	Pressure compensation and drainage devices	Enclosures
AMTE8xxx	AWHD050	AWHD300	LFHD04	-	ECHD10	28402001	HDW0442215
AMTE8xxx	AWHD050	AWHD300	LFHD04	DIPH210	ECHD10, ECHD20	28402001	HDW0553921
AMTE8xxx	AWHD050	AWHD300	LFHD04	DIPH210	ECHD10, ECHD20	28402001	HDW0558121
AMTE8xxx	AWHD050	AWHD300	LFHD04	DIPH300	ECHD10, ECHD20, ECHD22, ECHD30	DA28455, DA28455S	HDW0606130
AMTE8xxx	AWHD050	AWHD300	LFHD04	DIPH210	ECHD10, ECHD20	DA28455, DA28455S	HDW0675121
AMTE8xxx	AWHD050	AWHD300	LFHD04	DIPH210	ECHD10, ECHD20	DA28455, DA28455S	HDW0773921
AMTE8xxx	AWHD050	AWHD300	LFHD04	DIPH210	ECHD10, ECHD20	DA28455, DA28455S	HDW0776121
AMTE8xxx	AWHD050	AWHD300	LFHD04	DIPH210	ECHD10, ECHD20, ECHD22, ECHD30	DA28455, DA28455S	HDW0828130
AMTE8xxx	AWHD050	AWHD300	LFHD04	DIPH300	ECHD10, ECHD20, ECHD22, ECHD30	DA28455, DA28455S	HDW1228130
AMTE8xxx	AWHD050	AWHD300	LFHD04	DIPH300	ECHD10, ECHD20, ECHD22, ECHD30	DA28455, DA28455S	HDW1428130

Depth adjustment bolts, AMTE8xxx

AMTE depth adjustment/spacer bolt provides a cost effective solution for mounting plate depth adjustment. With a M8 thread, they are available in seven lengths to provide 10 - 100mm of depth adjustment.

Ordering information	AMTE8010 – spacer bolts M8, 10mm, pack of 50. AMTE8020 – spacer bolts M8, 20mm, pack of 50. AMTE8030 – spacer bolts M8, 30mm, pack of 50. AMTE8040 – spacer bolts M8, 40mm, pack of 20. AMTE8050 – spacer bolts M8, 50mm, pack of 20. AMTE8055 – spacer bolts M8, 55mm, pack of 20. AMTE8100 – spacer bolts M8, 100mm, pack of 20.
Material	Zinc plated steel



Wall mounting brackets, AWHD

AWHD wall mounting brackets permit the HDW enclosure to be mounted on a vertical wall and provide a space between the wall and the enclosure to facilitate cleaning.

They come with special blue silicone sealing washers to guarantee the IP rating and maintain the hygienic design. Rounded in cross-section, they are self-draining.

They are available in two sizes. Note that AWHD must be ordered individually.

Ordering information	AWHD050 – wall mount brackets with 50mm gap, pack of 1. AWHD300 – wall mount brackets with 300mm gap, pack of 1.
Material	AISI 304L stainless steel, blue silicone.

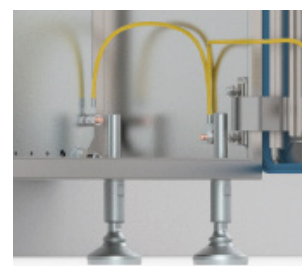


Levelling feet, LFHD

LFHD levelling feet permit the HDW enclosure to be floor-mounted on an uneven surface.

They come with fully covered and sealed threads to maintain the hygienic up to 10° slope design. The LFHD foot is certified according to the 3A hygienic standard: '88-00' and certified according to the EHEDG hygienic standard TYPE EL - CLASS 1.

Ordering information	LFHD04 – levelling feet, hygienic design, pack of 4.
Material	AISI 304L stainless steel, blue silicone, black plastic.
Height adjustment	104 – 140mm.
Maximum load	3000N per foot.



Cable glands HD

Standard cable glands pose a hygiene risk due to the presence of external threads, gaps and dead spaces and as such should not be used. Hygiene compliant HD cable glands should always be used in conjunction with HDW enclosures. It is recommended that bottom cable entry is always specified to further reduce the risk of accumulation of dirt and hygiene-critical micro-organisms. Supplied in pack of five.

Ordering information	CGHD12 – hygienic cable gland, M12x1.5 thread, suits cable 2.5 – 6.5mm diameter. CGHD16 – hygienic cable gland, M16x1.5 thread, suits cable 5.5 – 10mm diameter. CGHD20 – hygienic cable gland, M20x1.5 thread, suits cable 5 – 12mm diameter . CGHD25 – hygienic cable gland, M25x1.5 thread, suits cable 9 – 18mm diameter.
Material	AISI 303 stainless steel and sealing in silicone.



Depth interior profiles, DIPHxxx

The DIPH depth interior profile system is a 40mm wide and 25mm high mounting profile can be mounted on the enclosure depth. It can also be used in conjunction with CLPF profiles, providing flexibility for the mounting of accessories, components, and other equipment such as enclosure lights. Two rows of hole patterns for cage nut fixing and self-tapping screws are provided. Supplied as a set of 4 with mounting accessories.

Note: DIP depth interior profiles cannot be used in conjunction with the AMG depth adjustment kit

Ordering information	DIPH210 – depth interior profile 210mm, 150N max loading, set of 4 DIPH300 – depth interior profile 300mm, 150N max loading, set of 4
Material	Zinc plated steel

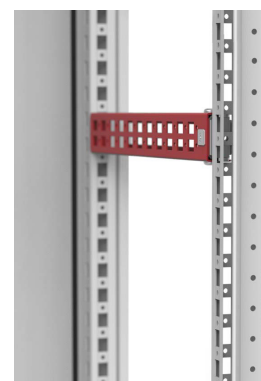


Mounting profiles, Snapline CLPFxxx

The CLPF profile system is a 40mm wide and 25mm high mounting profile can be mounted in all directions when used together with the DIP accessory, providing full flexibility for the mounting of accessories, components, and other equipment. Two rows of hole patterns for cage nut fixing and self-tapping screws are provided. The CLPF is a Snapline accessory and can be quickly and easily installed without any tools. All CLPF profiles are supplied as a set of 4.

CLPF profiles require DIP profiles to be installed first, observe DIP max loading.

Ordering information	CLPF300 – Snapline mounting profile W/D 300mm, set of 4 CLPF400 – Snapline mounting profile W/D 400mm, set of 4 CLPF500 – Snapline mounting profile W/D 500mm, set of 4 CLPF600 – Snapline mounting profile W/D 600mm, set of 4 CLPF800 – Snapline mounting profile W/D 800mm, set of 4 CLPF1000 – Snapline mounting profile W/D 1000mm, set of 4 CLPF1200 – Snapline mounting profile W/D 1200mm, set of 4
Material	Zinc plated steel



Fan covers, ECHDxx

Specially designed to meet the needs of harsh sanitary operations in the food and beverage industry, the ECHD fan covers have a higher IP rating to help protect GSV filter fans and GSF filter grilles against water ingress

Ordering information	ECHD10 – Fan cover hygienic design H230 x W150 x D57mm ECHD20 – Fan cover hygienic design H260 x W176 x D57mm ECHD22 – Fan cover hygienic design H330 x W233 x D57mm ECHD30 – Fan cover hygienic design H390 x W282 x D95mm
Material	304L pre-grained stainless steel, 400 finish, with blue silicone gasket, FDA 21 CFR 177.2600 compliant



Door switch, HDSW01

HDSW01 door switches allow lights or other electrical devices to turn on or off automatically when the enclosure door is opened. They include a NO (normally open) and a NC (normally closed) volt-free contact. Designed to be mounted directly to the enclosure frame. The mounting locations ensure that the switch is always positioned for correct operation once installed

NOTE: no machining is required to install the HDSW01

Ordering information	HDSW01 – Door switch 3A / 240V, supplied with mounting accessories
Material	Polymer body



Enclosure lights, LED0254xxxx and TLCL87035

Contact NHP for additional information and other options.

Ordering information	LED02540001 – LED 025 lamp 5W/400Lm 100-240V AC, screw mount, ON/OFF switch, supplied with connector LED02540101 – LED 025 lamp 5W 24-48V DC, screw mount, motion detector, supplied with connector TLCL87035 – compact LED light 7.2W/945Lm 220-240V AC, magnetic & screw mount, door switch compatible TLCL8703524 – compact LED light 7.2W/945Lm 24V DC, magnetic & screw mount, door switch compatible
Optional accessories	TLCS01 – Door switch for TLCL lights, must be ordered with cable TLCS600
Material	Transparent plastic housing



Filter fans GSVxxxx and filter grilles GSFxx

Kryos³ GSV filter fans and GSF filter grilles, manufactured by Cosmotec, are easy to install with clip-on mounting. GSV filter fans have efficient filter mats, screwless terminals, long life ball bearing fans and have a reversible fan motor for air in or air out. Available in a range of sizes and air flows, they are suitable for all floor standing enclosures and have IP54 protection. They can be used both indoors and outdoors, however a suitable EFCS fan cover should be installed in locations where inclement weather or hose-down cleaning may occur. Replacement filter mats are available.

For more information on the GSV/GSF filter fan range, as well as additional heating and cooling options, please refer to the Climate Control Selection Guide and Price List Catalogue.

A KTS1110100 cooling thermostat, manufactured by Stego, is recommended for controlling fan operation. It may also be used as a high temperature alarm.

Ordering information – filter fans	GSV1000211 – filter fan H119 x W119 x D58mm 24V DC 35m3/hr GSV1000220 – filter fan H119 x W119 x D58mm 230V AC 35m3/hr GSV1500211 – filter fan H152 x W152 x D75mm 24V DC 67m3/hr GSV1500220 – filter fan H152 x W152 x D75mm 230V AC 67m3/hr GSV2000211 – filter fan H204 x W204 x D98mm 24V DC 108m3/hr GSV2000220 – filter fan H204 x W204 x D98mm 230V AC 108m3/hr GSV2500211 – filter fan H250 x W250 x D118mm 24V DC 190m3/hr GSV2500220 – filter fan H250 x W250 x D118mm 230V AC 190m3/hr GSV2501220 – filter fan H250 x W250 x D99mm 230V AC 270m3/hr
Ordering information - thermostat	KTS11101000 - cooling thermostat 0 to +60°C, 1 normally open contact
Ordering information – filter grilles	GSF10 – filter grille H119 x W119 x D29mm GSF15 – filter grille H152 x W152 x D33mm GSF20 – filter grille H204 x W204 x D34mm GSF25 – filter grille H250 x W250 x D48mm
Ordering Information – replacement filter mats	AVAFAGS10 – replacement filter mat IP54 suits GSV1000, GSF10, pack of 10 AVAFAGS15 – replacement filter mat IP54 suits GSV1500, GSF15, pack of 10 AVAFAGS20 – replacement filter mat IP54 suits GSV2000, GSF20, pack of 10 AVAFAGS25 – replacement filter mat IP54 suits GSV2500, GSF25, pack of 10
Material	Filter fan and filter grille body: ABS Filter mat: synthetic fibre Thermostat: bimetallic sensor and plastic body



Pressure compensation devices, DA284xx

DA284 pressure compensation devices manufactured by Stego are easy to install and provide effective pressure equalisation between the inside and outside of the enclosure. The one-way membrane allows moisture to escape while preventing the ingress of liquid water or dirt and debris.

AS3000:2018 clause 1.7.2 states that “a breathing/pressure equalisation valve shall be installed to assist with changes in humidity and drainage of moisture”. Therefore, to comply with the new AS3000:2018 standards, pressure compensation devices must be fitted to all enclosures where condensation is likely to occur - in practice, all enclosures installed outside.

Pressure compensation devices should always be installed in pairs on opposite sides of the enclosure. The Stego DA284 is available in 303 or 316L grade stainless steel and have an ingress protection of up to IP66 according to EN 60259 and IP69K according to EN 400050-9.

Ordering information	28402001 – pressure compensation device, AISI 303 grade stainless steel, M12 IP66/X9K (QTY 1) DA28455 – pressure compensation device, AISI 303 grade stainless steel, M40 IP66/X9K (QTY 1) DA28455S – pressure compensation device, AISI 316L grade stainless steel, M40 IP66/X9K (QTY 1)
Material	AISI 303 or AISI316L grade stainless steel, model dependant



Drainage device, DD084

DD084 drainage devices manufactured by Stego are easy to install and provide effective drainage of any condensation at the bottom of the enclosure. The one-way membrane allows up to 200ml/h of liquid to escape while preventing the ingress of liquid water or dirt and debris.

Ordering information	DD084 - Drainage device plastic IP66/67/69K M50
Material	Nylon / PA6 / PA66 (Polyamide 6) material



Key features



30 degree sloped roof

- Self-draining
- Easy to hose clean
- Integrated 30mm overhang



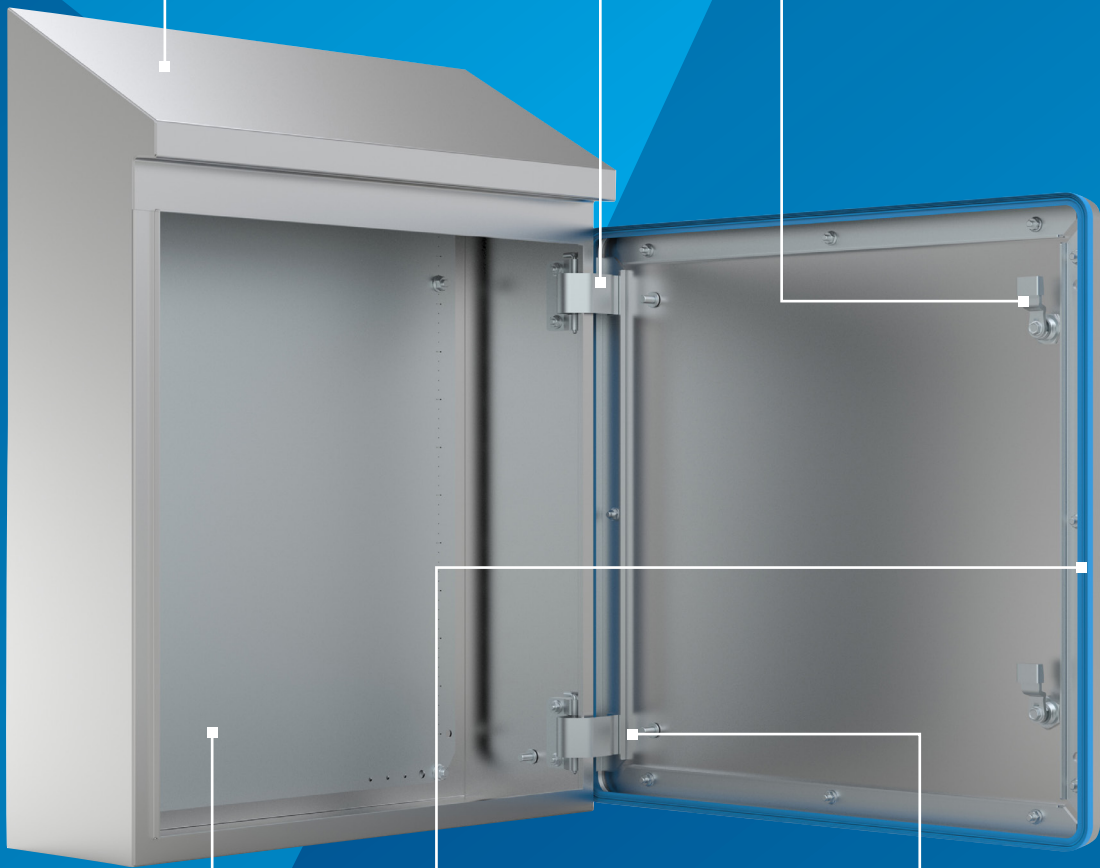
Smart hinge design

- Completely hidden inside enclosure when closed
- Special closing action to guarantee gasket compression
- Reversible (to swap door for left hand open)



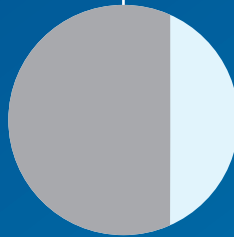
Hygienic lock

- Special hygienic locking system
- Self-draining design
- 316L stainless steel



Mounting plate

- Supplied with enclosure
- Galvanised steel 2mm thick
- Pre-marked at 10mm intervals



Blue silicone gasket

- One piece gasket easy to remove for cleaning or replacement
- FDA certified for food production areas
- Blue colour makes any contamination easily visible



Multiple earthing studs

- In the door
- In the enclosure
- Simplifies wiring

The nVent HOFFMAN HDW range offers several key benefits

The nVent HOFFMAN HDW wall mount hygienic design enclosure range meets the unique requirements and strict hygiene standards of the food, beverage and pharmaceutical industries. Both the enclosures and the accessories are inherently self-draining and when installed correctly, are free from any crevices, gaps or recesses where bacteria or molds can form a biofilm allowing them to survive and grow.

Key benefits of this range include:

- Available in eight standard sizes ex-stock, minimising delivery time
- The special one-piece blue silicone gasket provides a continuous, gap-free seal around the door and is easily removable for cleaning or replacement, while the blue colour makes any contamination clearly visible
- Earthing studs provided on enclosure body and door, thus simplifying wiring and reducing wiring time
- Easy depth adjustment provides the flexibility to suit different depth components
- The 30° sloped roof with integrated 30mm overhang is self-draining and prevents any liquid from dripping down onto the door seal
- The door edges are sloped forward at 8° and thus self-draining, preventing any liquid from sitting on top of the door seal
- Hygienic design wall mount brackets are available with either a 50mm or 300mm gap between the enclosure rear and the wall for easy cleaning
- Hygienic design levelling feet allow the enclosure to be mounted on an uneven floor

Applications

The nVent HOFFMAN HDW range has been specifically designed to meet the unique challenges of the food and beverage and pharmaceutical industries. The innovative design of the sloped roof, door, hinges, gasket and accessories ensures that liquids and debris cannot accumulate, while the gap-free construction and smooth surface finish ensures that bacteria, viruses, moulds and other pathogens cannot accumulate and grow. Intended for ultra-high cleanliness environments requiring IP69K rated equipment, the HDW range is ideally suited to applications in the following industries:

- Dairy processing, such as milk and cheese manufacturing
- Meat processing and smallgoods manufacturing
- Fish and other seafood processing
- Fruit and vegetable processing and canning
- Breweries and wineries
- Soft drink manufacturing and bottling
- Frozen/convenience food manufacturing
- Pet food processing and manufacturing
- Cosmetics manufacturing
- Pharmaceuticals manufacturing



Fruit sorting



Fish processing



Frozen fruit processing



Ice cream production



Sliced cheese production



Canned vegetables production



Pickled vegetable production



Cosmetics manufacture



Processed cold meats and smallgoods production



Hamburger pattie production

Technical information

Material (body + door):

AISI 304L pre-grained stainless steel, body 1.5mm, door 2mm, Monoblock body, folded and seam-welded.

Roof sloped towards front at 30° with 30mm overhang, corner-formed one-piece door with 8° slope and 120° opening.

Finish:

Stainless steel 400 grain, polished to $Ra < 0.8\mu m$ Material (mounting plate): 2mm galvanised steel (marked at 10mm intervals); in enclosures 800mm or larger the mounting plate has a fold on all sides for extra rigidity.

Material (gasket):

Blue silicone, one piece, FDA 21 CFR 177.2600 compliant

Lock:

316L stainless steel with blue silicone gasket, hygienic design. The lock conforms with norm DIN EN 1672-2:2009.

Ingress protection:

IP66, IP69K

Impact resistance:

IK08 (5 Joules)

Delivery:

Enclosure with door, mounting plate, metallic key and mounting accessories.

Certifications for nVent HOFFMAN HDW range:



Why NHP?

While our customers' challenges may be complex, their ultimate goal is simple: run a profitable, safe and sustainable operation.

NHP is committed to servicing the needs of our customers. With more than 50 years of experience in the electrical and engineering industry, our specialist teams work collaboratively to design and deliver solutions to maximise the success of your project.

We bring together internationally recognised automation, power distribution and motor control products with local knowledge and expertise to deliver best practice services from concept design through to installation and after-sales service, including project management.

A partnership with NHP will provide you with:



24/7/365
emergency service



NHP project
management



Extensively trained and
qualified service technicians



Extensive local
stockholding



National service
network



Customised
manufactured solutions



Optimise performance with SMART Motor Control

When it comes to your food and beverage requirements, elevate your operations and connectivity with Smart Motor Control solutions from NHP.

Access to production and machine data helps you to make informed decisions that improve production, mitigate downtime, increase productivity and boost profitability, offering substantial benefits over conventional approaches.

Work smarter and increase asset utilisation by implementing a SMART Motor Control Solution from NHP to improve productivity and avoid motor failures with an integrated, data-driven approach.

**For your next project, visit
nhp.com.au/more/intellmc**



Notes

A series of horizontal lines for writing, spanning the width of the page.



nhp.com.au
SALES 1300 647 647
nhpsales@nhp.com.au

nhpnz.co.nz
0800 647 647
sales@nhp-nz.com

NHP Electrical Engineering Products

A.B.N. 84 004 304 812
© COPYRIGHT NHP 2025
NHP53BCH 03/25