

nVent HOFFMAN

# Floor standing enclosures

Flexible and dependable  
solutions for protecting  
valuable components



[nhp.com.au](http://nhp.com.au) | [nhpnz.co.nz](http://nhpnz.co.nz)



1300 647 647 | 0800 647 647



[sales@nhp.com.au](mailto:sales@nhp.com.au) | [sales@nhp-nz.com](mailto:sales@nhp-nz.com)





## nVent HOFFMAN floor standing enclosures are the flexible enclosure choice for all arduous locations

### Flexible options

- Single and double door versions available in a range of heights, widths and depths, in 316L stainless steel (SS) or powder coated mild steel (MS)
- Available in fully welded and bayable/combinable versions
- Shared range of accessories including inner doors, plinths, rain hoods, 19" rack mounting and locks for easy customising
- Enclosures can be fitted with climate control options such as heaters, ventilation fans, heat exchangers and air conditioning units

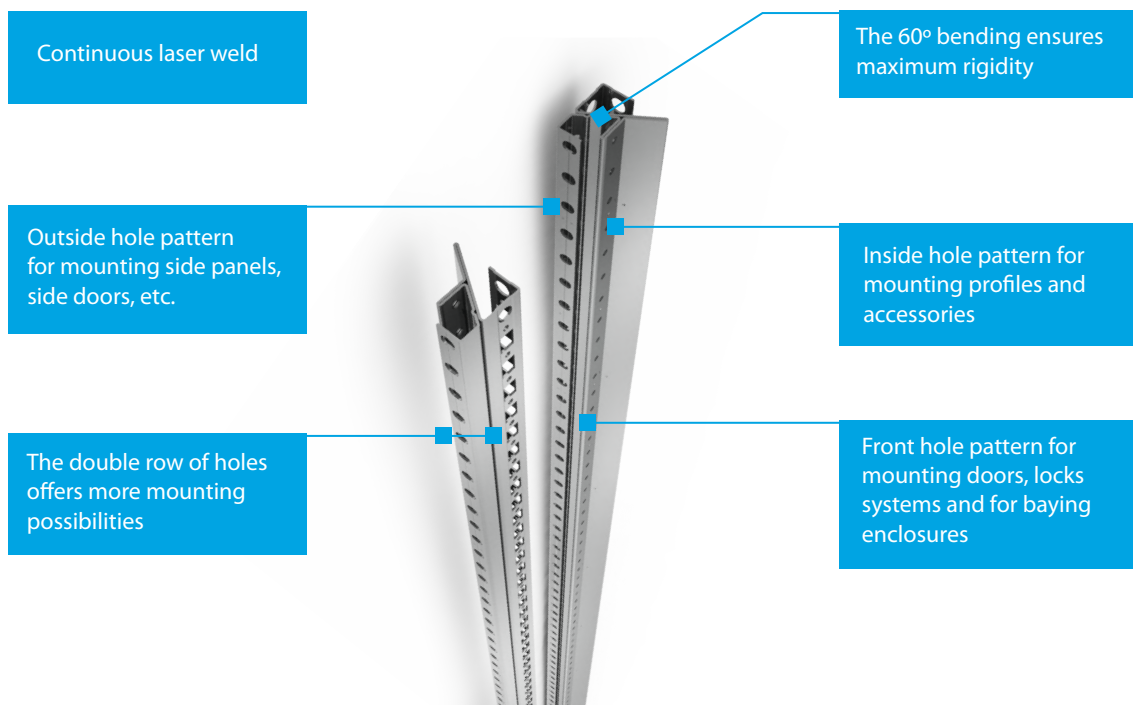
### Robust design

- Worldwide certifications (CE, CSA, GOST, Kema Keur, Lloyds Shipping, cULus)
- IK10 impact resistance rating across the whole floor standing enclosure range provides high resistance to vandalism
- Continuous welding for maximum strength with no weak spots
- Steel door frame with fixed corner pieces and mounting profiles
- Formed corners with single bend and smooth, consistent finish
- Uniform powder coat structure and thickness on frame and panels with guaranteed adherence on corners delivers exceptionally durable finish with better corrosion protection in indoor applications
- Smooth, polished consistent finish on external welds reduces potential for bacterial growth in food and beverage applications
- IP55 or IP66 ingress protection (model dependant)
- AISI 316L marine grade stainless steel provides high corrosion protection in harsh and marine environments



### Innovative features

- Snapline quick-fixation baying brackets and CLPF profile system provide tool-free installation, reducing assembly time by up to 80% or 14 minutes
- New customisable locking handle with transparent covers top and bottom, allowing a company name or logo to be inserted
- New metallic lifting handles in either RAL 9005 (mild steel models) or chrome (stainless steel models) finishes are compatible with standard locking inserts and half cylinders
- Enhanced security indicator provides audible click when the enclosure is correctly locked or unlocked
- Slave doors on double door models come with locking system as standard, eliminating slave doors opening in an uncontrolled fashion and safeguarding operators from harm
- Flat locking rods positioned parallel to the enclosure door provide an improved flush design and when combined with the self-positioning locking catchers, provide smooth opening and closing motion
- An improved polyurethane gasket that absorbs 50% less water than traditional polyurethane gaskets, greatly reducing the risk water ingress into the enclosure when the gasket is compressed when closing the door
- Mounting plate is supplied on the outside of the enclosure, eliminating the need to unpack everything to get to the mounting plate, saving time and fitting components
- Low profile bottom cable entry profile section with pre-fitted foam can be easily click-mounted in place, saving installation time
- A unique profile guarantees strength, rigidity and flexible mounting options



## Key features

### Improved locking

- Audible click indication when closed correctly
- Multiple lock options available



### New customisable locking handle

- Transparent cover allowing company name to be inserted
- Range of locking options available



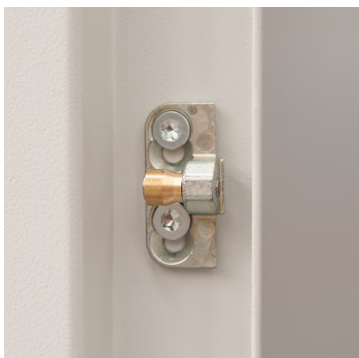
### New flat locking rods

- Improved flush design
- Smooth operation



### New locking system

- Multiple locking points provide secure door closure guaranteeing IP rating





#### New locking system

- Flat rods parallel to the door provide smooth operation and positive closing



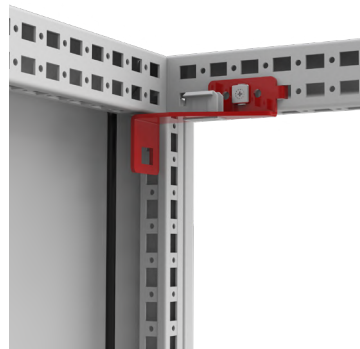
#### Welded hinge design

- Twin hinge pin design
- Easier mounting and detaching of door
- Machined slots in pin plus retainer in hinge body ensures pins remain within the hinge



#### Flexible mounting options

- Multiple accessories available for easy customisation



#### Easy to fit side panels

- Combinable versions feature an easy to hang side panel



## MKS/MKD mild steel single/double door semi-compact enclosure range



### MS - nVent HOFFMAN compact MKS (single door)/MKD (double door) range

- Single door: size H1600 x W600 x D400 to H2000 x W1000 x D400
- Double door: size H1600 x W1200 x D400 to H2000 x W1600 x D400
- IP55 ingress protection
- RAL 7035 powder coated
- Four times folded and seam welded frame
- Removable rear and roof panels
- Four point locking system with 3mm DIN lock
- Fully formed
- Adjustable mounting plate
- Large range of accessories

### Ordering Information – MKS/MKD mild steel single/double door enclosures



Enclosure dimensions (mm)						
H	W	D	Weight (kg)	Mounting plate dimensions H x W (mm)	Max. useable depth (mm)	Catalogue no.
1600	600	400	92	1494 x 494	359	MKS16064R5
1600	800	400	113	1494 x 694	359	MKS16084R5
1600	1000	400	131	1494 x 894	359	MKS16104R5
1800	600	400	100	1694 x 494	359	MKS18064R5
1800	800	400	123	1694 x 694	359	MKS18084R5
1800	1000	400	142	1694 x 894	359	MKS18104R5
2000	600	400	111	1894 x 494	359	MKS20064R5
2000	800	400	133	1894 x 694	359	MKS20084R5
2000	800	500	131	1894 x 694	459	MKS20085R5
2000	1000	400	158	1894 x 894	359	MKS20104R5
2000	1000	500	156	1894 x 850	459	MKS20105R5
1600	1200	400	163	1494 x 1094	359	MKD16124R5
1800	1200	400	175	1694 x 1094	359	MKD18124R5
1800	1600	400	222	1694 x 1494	359	MKD18164R5
2000	1200	400	195	1894 x 1094	359	MKD20124R5
2000	1200	500	165	1894 x 1094	459	MKD20125R5
2000	1600	400	242	1894 x 1494	359	MKD20164R5
2000	1600	500	234	1894 x 1494	459	MKD20165R5

Most popular sizes shown. For complete range, please refer to Price List Catalogue, Section 14

# Ordering information – semi-compact mild steel enclosure accessories

Plinth front/ back 100mm high*	Plinth sides 100mm high*	Plinth front/back 200mm high*	Plinth sides 200mm high*	Document holder*	Inner door*	Door switch*	Wall fixing brackets*	Lifting lugs*	Filter fans / filter grilles*	Catalogue no.
PF1060	PS1040	PF2060	PS2040	DRB600R5, DRB0303R5, DRA4	DI1606R5	DSW01 TLCS01	CCB02	LE9304	GSVxx / GSFxx	MKS16064R5
PF1080	PS1040	PF2080	PS2040	DRB800R5, DRB0303R5, DRA4	DI1608R5	DSW01 TLCS01	CCB02	LE9304	GSVxx / GSFxx	MKS16084R5
PF1100	PS1040	PF2100	PS2040	DRB0303R5, DRA4	-	DSW01 TLCS01	CCB02	LE9304	GSVxx / GSFxx	MKS16104R5
PF1060	PS1040	PF2060	PS2040	DRB600R5, DRB0303R5, DRA4	DI1806R5	DSW01 TLCS01	CCB02	LE9304	GSVxx / GSFxx	MKS18064R5
PF1080	PS1040	PF2080	PS2040	DRB800R5, DRB0303R5, DRA4	DI1808R5	DSW01 TLCS01	CCB02	LE9304	GSVxx / GSFxx	MKS18084R5
PF1100	PS1040	PF2100	PS2040	DRB0303R5, DRA4	-	DSW01 TLCS01	CCB02	LE9304	GSVxx / GSFxx	MKS18104R5
PF1060	PS1040	PF2060	PS2040	DRB600R5, DRB0303R5, DRA4	DI2006R5	DSW01 TLCS01	CCB02	LE9304	GSVxx / GSFxx	MKS20064R5
PF1080	PS1040	PF2080	PS2040	DRB800R5, DRB0303R5, DRA4	DI2008R5	DSW01 TLCS01	CCB02	LE9304	GSVxx / GSFxx	MKS20084R5
PF1080	PS1050	PF2080	PS2050	DRB800R5, DRB0303R5, DRA4	DI2008R5	DSW01 TLCS01	CCB02	LE9304	GSVxx / GSFxx	MKS20085R5
PF1100	PS1040	PF2100	PS2040	DRB0303R5, DRA4	-	DSW01 TLCS01	CCB02	LE9304	GSVxx / GSFxx	MKS20104R5
PF1120	PS1050	PF2120	PS2050	DRB800R5, DRA4	-	DSW01 TLCS01	CCB02	LE9304	GSVxx / GSFxx	MKS20125R5
PF1120	PS1040	PF2120	PS2040	DRB0303R5, DRA4	-	DSW01 TLCS01	CCB02	LE9304	GSVxx / GSFxx	MKD16124R5
PF1120	PS1040	PF2120	PS2040	DRB600R5, DRA4	-	DSW01 TLCS01	CCB02	LE9304	GSVxx / GSFxx	MKD18124R5
PF1120	PS1040	PF2120	PS2040	DRB0303R5, DRA4	-	DSW01 TLCS01	CCB02	LE9304	GSVxx / GSFxx	MKD20124R5
PF1080 X 2	PS1040	PF2080 x 2	PS2040	DRB600R5, DRA4	-	DSW01 TLCS01	CCB02	LE9304	GSVxx / GSFxx	MKD20164R5
PF1120	PS1050	PF2120	PS2050	DRB0303R5, DRA4	-	DSW01 TLCS01	CCB02	LE9304	GSVxx / GSFxx	MKD20125R5
PF1080 X 2	PS1050	PF2080 x 2	PS2050	DRB600R5, DRA4	-	DSW01 TLCS01	CCB02	LE9304	GSVxx / GSFxx	MKD20165R5

\*All accessories must be ordered separately





## MCS/MCD mild steel single/double door bayable (combinable) enclosure range

### MS - nVent HOFFMAN bayable MCS (single door)/MCD (double door) range

- Single door: size H1800 x W600 x D400 to H2000 x W1000 x D800
- Double door: size H1800 x W1200 x D400 to H2000 x W1200 x D800
- IP55 (single/double door) ingress protection
- RAL 7035 powder coated
- Seam welded reversed open profiles
- Doors can be mounted for left or right openings
- Removable roof panels
- Four point locking system with 3mm DIN lock
- Adjustable mounting plate
- Side panels can be ordered separately as required
- Modular design
- Ideal when baying or combining cabinets

### Ordering Information – MCS mild steel single door bayable enclosures

Enclosure dimensions (mm)						
H	W	D	Weight (kg)	Mounting plate dimensions H x W (mm)	Max. useable depth (mm)	Catalogue no.
1800	600	400	91	1694 x 494	359	MCS18064R5
1800	600	500	95	1694 x 494	459	MCS18065R5
1800	800	400	113	1694 x 694	359	MCS18084R5
1800	800	500	117	1694 x 694	459	MCS18085R5
1800	1000	400	135	1694 x 894	359	MCS18104R5
1800	1000	500	139	1694 x 894	459	MCS18105R5
2000	600	400	100	1894 x 494	359	MCS20064R5
2000	600	500	119	1894 x 494	459	MCS20065R5
2000	600	800	107	494 x 1894	759	MCS20068R5
2000	800	400	123	1894 x 694	359	MCS20084R5
2000	800	500	127	1894 x 694	459	MCS20085R5
2000	800	600	132	1894 x 694	559	MCS20086R5
2000	800	800	132	1894 x 694	559	MCS20088R5
2000	1000	400	150	1894 x 894	359	MCS20104R5
2000	1000	800	156	894 x 1894	759	MCS20108R5
2000	1000	500	146	1894 x 894	459	MCS20105R5
2000	1000	600	155	1894 x 894	559	MCS20106R5

### MCD double door enclosures



#### Ordering Information – MCD mild steel double door bayable enclosures

Enclosure dimensions (mm)						
H	W	D	Weight (kg)	Mounting plate dimensions H x W (mm)	Max. useable depth (mm)	Catalogue no.
1800	1200	400	173	1694 x 494	359	MCD18124R5
2000	1000	800	164	1894 x 894	759	MCD20108R5
1800	1600	400	196	1694 x 694	359	MCD18164R5
1800	1600	400	196	1694 x 694	359	MCD18164R5
2000	1200	400	185	1694 x 694	359	MCD20124R5
2000	1200	500	190	1694 x 894	459	MCD20125R5
2000	1200	600	195	1694 x 894	559	MCD20126R5
2000	1600	400	226	1894 x 494	359	MCD20164R5
2000	1600	500	228	1494 x 1894	459	MCD20165R5

Most popular sizes shown. For complete range, please refer to Price List Catalogue, Section 14

\* Side panels must be ordered separately.

#### Ordering information – bayable mild steel enclosure accessories

Plinth front/back 100mm high*	Plinth sides 100mm high*	Plinth front/back 200mm high*	Plinth sides 200mm high*	Plinth combining profile*	Side panels*	Baying brackets*	Inner door*	Door switch*	Wall fixing brackets*	Lifting lugs*	Filter fans / filter grilles*	Catalogue no.
Single door enclosures - 1800mm high												
PF1060	PS1040	PF2060	PS2040	PCP04	SPM1804R5	CCI6, CCM04, CCE06	DI1806R5	DSW01 TLCS01	CCB02	LE9304, LC02	GSVxx / GSFxx	MCS18064R5
PF1060	PS1050	PF2060	PS2050	PCP05	SPM1805R5	CCI6, CCM04, CCE06	DI1806R5	DSW01 TLCS01	CCB02	LE9304, LC02	GSVxx / GSFxx	MCS18065R5
PF1080	PS1040	PF2080	PS2040	PCP04	SPM1804R5	CCI6, CCM04, CCE06	DI1808R5	DSW01 TLCS01	CCB02	LE9304, LC02	GSVxx / GSFxx	MCS18084R5
PF1080	PS1050	PF2080	PS2050	PCP05	SPM1805R5	CCI6, CCM04, CCE06	DI1808R5	DSW01 TLCS01	CCB02	LE9304, LC02	GSVxx / GSFxx	MCS18085R5
PF1100	PS1040	PF2100	PS2040	PCP04	SPM1804R5	CCI6, CCM04, CCE06	DI1810R5	DSW01 TLCS01	CCB02	LE9304, LC02	GSVxx / GSFxx	MCS18104R5
PF1100	PS1050	PF2100	PS2050	PCP05	SPM1805R5	CCI6, CCM04, CCE06	DI1810R5	DSW01 TLCS01	CCB02	LE9304, LC02	GSVxx / GSFxx	MCS18105R5
Single door enclosures - 2000mm high												
PF1060	PS1040	PF2060	PS2040	PCP04	SPM2004R5	CCI6, CCM04, CCE06	DI2006R5	DSW01 TLCS01	CCB02	LE9304, LC02	GSVxx / GSFxx	MCS20064R5
PF1060	PS1050	PF2060	PS2040	PCP05	SPM2005R5	CCI6, CCM04, CCE06	DI2006R5	DSW01 TLCS01	CCB02	LE9304, LC02	GSVxx / GSFxx	MSS20065R5
PF1060	PS1080	PF2060	PS2080	PCP08	SPM2008R5	CCI6, CCM04, CCE06	DI2006R5	DSW01 TLCS01	CCB02	LE9304, LC02	GSVxx / GSFxx	MCS20068R5

#### Ordering information - bayable mild steel enclosure accessories (continued)

#### Ordering information – bayable mild steel enclosure accessories

Plinth front/back 100mm high*	Plinth sides 100mm high*	Plinth front/back 200mm high*	Plinth sides 200mm high*	Plinth combining profile*	Side panels*	Baying brackets*	Inner door*	Door switch*	Wall fixing brackets*	Lifting lugs*	Filter fans / filter grilles*	Catalogue no.
Single door enclosures - 2000mm high (continued)												
PF1080	PS1040	PF2080	PS2040	PCP04	SPM2004R5	CCI6, CCM04, CCE06	DI2008R5	DSW01 TLCS01	CCB02	LE9304, LC02	GSVxx / GSFxx	MCS20084R5
PF1080	PS1050	PF2080	PS2050	PCP05	SPM2005R5	CCI6, CCM04, CCE06	DI2008R5	DSW01 TLCS01	CCB02	LE9304, LC02	GSVxx / GSFxx	MCS20085R5
PF1080	PS1060	PF2080	PS2060	PCP06	SPM2006R5	CCI6, CCM04, CCE06	DI2008R5	DSW01 TLCS01	CCB02	LE9304, LC02	GSVxx / GSFxx	MCS20086R5
PF1080	PS1080	PF2080	PS2080	PCP08	SPM2008R5	CCI6, CCM04, CCE06	DI2008R5	DSW01 TLCS01	CCB02	LE9304, LC02	GSVxx / GSFxx	MCS20088R5
PF1100	PS1040	PF2100	PS2040	PCP04	SPM2004R5	CCI6, CCM04, CCE06	DI2010R5	DSW01 TLCS01	CCB02	LE9304, LC02	GSVxx / GSFxx	MCS20104R5
PF1100	PS1050	PF2100	PS2050	PCP05	SPM2005R5	CCI6, CCM04, CCE06	DI2010R5	DSW01 TLCS01	CCB02	LE9304, LC02	GSVxx / GSFxx	MCS20105R5
PF1100	PS1060	PF2100	PS2060	PCP06	SPM2006R5	CCI6, CCM04, CCE06	DI2010R5	DSW01 TLCS01	CCB02	LE9304, LC02	GSVxx / GSFxx	MCS20106R5
PF1100	PS1080	PF2100	PS2080	PCP08	SPM2008R5	CCI6, CCM04, CCE06	DI2010R5	DSW01 TLCS01	CCB02	LE9304, LC02	GSVxx / GSFxx	MCS20108R5
Double door enclosure accessories - 1800mm high												
PF1120	PS1040	PF2120	PS2040	PCP04	SPM1804R5	CCI6, CCM04, CCE06	-	DSW01 TLCS01	CCB02	LE9304, LC02	GSVxx / GSFxx	MCD18124R5
PF1120	PS1050	PF2120	PS2050	PCP05	SPM1805R5	CCI6, CCM04, CCE06	-	DSW01 TLCS01	CCB02	LE9304, LC02	GSVxx / GSFxx	MCD18125R5
PF1080 x 2	PS1040	PF2080 x 2	PS2040	PCP04	SPM1804R5	CCI6, CCM04, CCE06	-	DSW01 TLCS01	CCB02	LE9304, LC02	GSVxx / GSFxx	MCD18164R5
Double door enclosure accessories - 2000mm high												
PF1100	PS1080	PF2100	PS2080	PCP08	SPM2008R5	CCI6, CCM04, CCE06	DI2010R5	DSW01 TLCS01	CCB02	LE9304, LC02	GSVxx / GSFxx	MCD20108R5
PF1120	PS1040	PF2120	PS2040	PCP04	SPM2004R5	CCI6, CCM04, CCE06	-	DSW01 TLCS01	CCB02	LE9304, LC02	GSVxx / GSFxx	MCD20124R5
PF1120	PS1050	PF2120	PS2050	PCP05	SPM2005R5	CCI6, CCM04, CCE06	-	DSW01 TLCS01	CCB02	LE9304, LC02	GSVxx / GSFxx	MCD20125R5
PF1120	PS1060	PF2120	PS2060	PCP06	SPM2006R5	CCI6, CCM04, CCE06	-	DSW01 TLCS01	CCB02	LE9304, LC02	GSVxx / GSFxx	MCD20126R5
PF1080 x 2	PS1040	PF2080 x 2	PS2040	PCP04	SPM2004R5	CCI6, CCM04, CCE06	-	DSW01 TLCS01	CCB02	LE9304, LC02	GSVxx / GSFxx	MCD20164R5
PF1080 x 2	PS1050	PF2080 x 2	PS2050	PCP05	SPM2005R5	CCI6, CCM04, CCE06	-	DSW01 TLCS01	CCB02	LE9304, LC02	GSVxx / GSFxx	MCD20165R5

**\*All accessories must be ordered separately**

## MPG mild steel console range



### MS - nVent HOFFMAN MPG range

- Size H985 x W600 x D400 to H985 x W1200 x D400
- IP66/55 (single/double door) ingress protection
- RAL 7035 powder coated
- Concealed hinges on top edge provide 80° opening
- DIN 3mm locks two for top panel and two for front door
- Bottom opening for cable access
- Roof panel is a single folded surface angled 12° from horizontal
- Adjustable mounting plate in steps of 12.5mm
- Removable rear panel and front door

### Ordering Information – MPG mild steel console enclosures

Enclosure dimensions (mm)						
H	W	D	Weight (kg)	Mounting plate dimensions H x W (mm)	Max. useable depth (mm)	Catalogue no.
985	600	400	54	790 x 499	333	MPG06R5
985	800	500	65	790 x 699	333	MPG08R5
985	1000	400	78	790 x 899	333	MPG10R5
985	1200	400	98	790 x 1099	333	MPG12R5

Most popular sizes shown. For complete range, please refer to Price List Catalogue, Section 14



### Ordering information – MPG mild steel console enclosure accessories

Plinth front/back 100mm high*	Plinth sides 100mm high*	Plinth front/back 200mm high*	Plinth sides 200mm high*	Wall fixing brackets*	Filter fans / filter grilles*	Catalogue no.
PF1060	PST1040	PF2060	PST2040	CCB02	GSVxx / GSFxx	MPG06R5
PF1080	PST1040	PF2080	PST2050	CCB02	GSVxx / GSFxx	MPG08R5
PF1100	PST1040	PF2100	PST2040	CCB02	GSVxx / GSFxx	MPG10R5
PF1120	PST1040	PF2110	PST2050	CCB02	GSVxx / GSFxx	MPG12R5

\*All accessories must be ordered separately



## EKSS/EKDS stainless steel single/double door compact enclosure range

### SS -nVent HOFFMAN compact EKSS (single door)/EKDS (double door) range

- Single door: size H1800 x W600 x D400 to H2000 x W1000 x D400
- Double door: size H1800 x W1200 x D400 to H2000 x W1600 x D400
- IP66 ingress protection (single door models and double door models with centre mullion) / IK10 impact resistance
- IP55 ingress protection (standard double door models without centre mullion) / IK10 impact resistance
- AISI 316L pre-grained stainless steel
- One piece body with integrated depth profiles
- Removable rear panels and adjustable mounting plate
- Four point locking system with chrome plated 3mm DIN lock

### Ordering Information – EKSS/EKDS 316 stainless steel single/double door fully welded (compact) enclosures



#### Enclosure dimensions (mm)

H	W	D	Weight (kg)	Mounting plate dimensions H x W (mm)	Max. useable depth (mm)	Catalogue no.
1800	600	400	90	1694 x 494	359	EKSS18064316
1800	800	400	109	1694 x 694	359	EKSS18084316
1800	1000	400	128.3	1694 x 894	359	EKSS18104316
2000	800	400	119.3	1694 x 694	359	EKSS20084316

#### Models below are IP66 and are supplied with centre mullion

1800	1200	400	151.9	1694 x 1094	359	EKDS181244X316
1800	1600	400	198	1694 x 1494	359	EKDS181644X316
2000	1200	400	166.8	1894 x 1094	359	EKDS201244X316
2000	1600	400	216.4	1894 x 1494	359	EKDS201644X316

Most popular sizes shown. For complete range, please refer to Price List Catalogue, Section 14



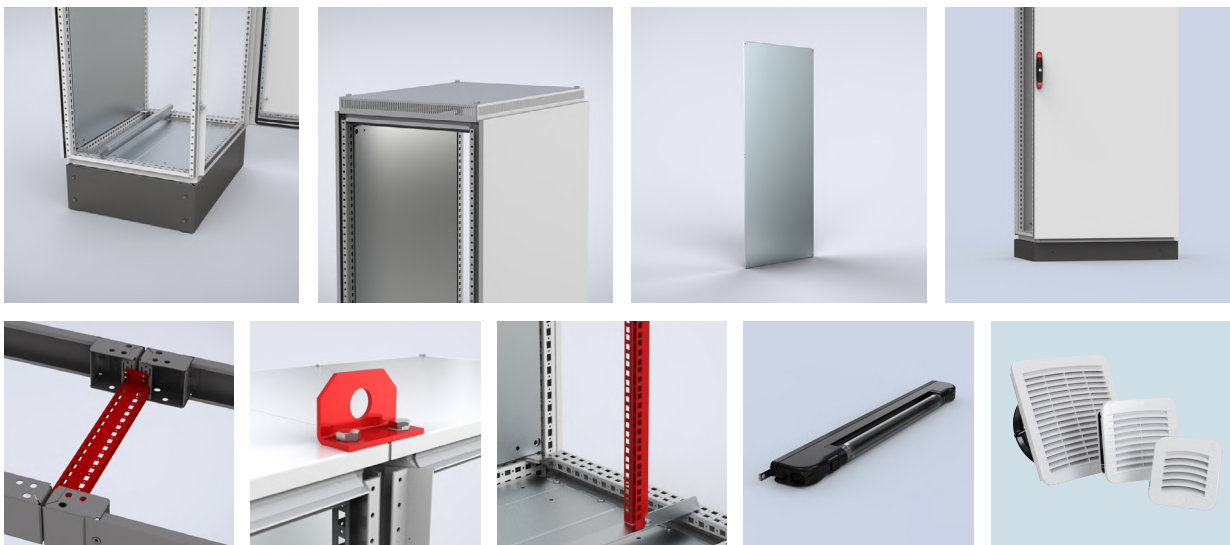


#### Ordering information - compact stainless steel enclosure accessories

Plinth front/back 100mm high*	Plinth sides 100mm high*	Plinth front/back 200mm high*	Plinth sides 200mm high*	Rain hoods*	Inner door*	Door switch*	Wall fixing brackets*	Lifting lugs*	Filter fans / filter grilles*	Fan cover / weather hood	Catalogue no.
PFS1060316	PSS1040316	PFS2060316	PSS2040316	MSST0640316	DI1806R5	DSW01 TLCS01	CCBS02	LE9304, LC02	GSVxx / GSFxx	EFCSxx316	EKSS18064316
PFS1080316	PSS1030316	PFS2080316	PSS2040316	MSST0840316	DI1808R5	DSW01 TLCS01	CCBS02	LE9304, LC02	GSVxx / GSFxx	EFCSxx316	EKSS18084316
PFS1100316	PSS1040316	PFS2100316	PSS2040316	MSST1040316	-	DSW01 TLCS01	CCBS02	LE9304, LC02	GSVxx / GSFxx	EFCSxx316	EKSS18104316
PFS1120316	PSS1040316	PFS2120316	PSS2040316	MSST0840316	DI2008R5	DSW01 TLCS01	CCBS02	LE9304, LC02	GSVxx / GSFxx	EFCSxx316	EKSS20084316
PFS1120316	PSS1040316	PFS2120316	PSS2040316	MSST1240316	DI1806R5	DSW01 TLCS01	CCBS02	LE9304, LC02	GSVxx / GSFxx	EFCSxx316	EKDS181244X316
PFS1080316 x 2	PSS1040316	PFS2080316 x 2	PSS2040316	MSST1640316	DI1808R5	DSW01 TLCS01	CCBS02	LE9304, LC02	GSVxx / GSFxx	EFCSxx316	EKDS181644X316
PFS1120316	PSS1040316	PFS2120316	PSS2040316	MSST1240316	DI2006R5	DSW01 TLCS01	CCBS02	LE9304, LC02	GSVxx / GSFxx	EFCSxx316	EKDS201244X316
PFS1080316 x 2	PSS1040316	PFS208016 x 2	PSS2040316	MSST1640316	DI2008R5	DSW01 TLCS01	CCBS02	LE9304, LC02	GSVxx / GSFxx	EFCSxx316	EKDS201644X316

\*All accessories must be ordered separately

#### Examples of floor standing enclosure accessories - please refer to the floor standing enclosure accessories section for details





## MCSS/MCDS Stainless Steel single/double door bayable (combinable) enclosure range

### SS - nVent HOFFMAN bayable MCSS (single door)/MCDS (double door) range

- Single door: size H1800 x W600 x D500 to H2000 x W1000 x D600
- Double door: size H1800 x W1000 x D500 to H2000 x W1200 x D600
- IP55 ingress protection / IK10 impact resistance
- Seam welded reversed open profiles with integrated depth profiles
- AISI 316L pre-grained stainless steel
- Doors can be mounted for left or right openings
- Removable roof panels and adjustable mounting plate
- Four point locking system with chrome plated 3mm DIN lock
- Side panels can be ordered separately as required

### Ordering Information – MCSS/MCDS 316 stainless steel single/double door bayable (combinable) enclosures

#### Enclosure dimensions (mm)

H	W	D	Weight (kg)	Mounting plate dimensions H x W (mm) H x W (mm)	Max. useable depth (mm)	Catalogue no.
1800	600	500	96	1694 x 494	459	MCSS18065316
1800	800	500	118	1694 x 694	559	MCSS18085316
1800	1000	500	108	1694 x 894	459	MCSS18105316
2000	600	600	103	1894 x 494	559	MCSS20066316
2000	800	600	132	1894 x 694	559	MCSS20086316
2000	1000	600	157	1894 x 894	559	MCSS20106316
1800	1000	500	153	1694 x 894	559	MCDS18105316
1800	1200	500	173	1694 x 1094	459	MCDS18125316
2000	1200	600	192	1894 x 1094	559	MCDS20126316



#### Ordering information – bayable stainless steel enclosure accessories

Plinth front/back 100mm high*	Plinth sides 100mm high*	Plinth front/back 200mm high*	Plinth sides 200mm high*	Side panels*	Baying brackets*	Inner door*	Door switch*	Wall fixing brackets*	Lifting lugs*	Filter fans / filter grilles*	Fan weather hoods*	Catalogue no.
PFS1060316	PSS1050316	PFS2060316	PSS2050316	SPMS1805316	CCI6, CCM04	DI1806R	DSW01 TLC01	CCBS02	LE9304, LC02	GSVxx / GSFxx	EFC-Sxx316	MCSS18065316
PFS1080316	PSS1050316	PFS2080316	PSS2050316	SPMS1805316	CCI6, CCM04	DI1808R5	DSW01 TLC01	CCBS02	LE9304, LC02	GSVxx / GSFxx	EFC-Sxx316	MCSS18085316
PFS1100316	PSS1050316	PFS2100316	PSS2060316	SPMS1805316	CCI6, CCM04	DI1810R5	DSW01 TLC01	CCBS02	LE9304, LC02	GSVxx / GSFxx	EFC-Sxx316	MCSS18105316
PFS1060316	PSS1060316	PFS2060316	PSS2060316	SPMS2006316	CCI6, CCM04	DI2006R5	DSW01 TLC01	CCBS02	LE9304, LC02	GSVxx / GSFxx	EFC-Sxx316	MCSS20066316
PFS1080316	PSS1060316	PFS2080316	PSS2060316	SPMS2006316	CCI6, CCM04	DI2008R5	DSW01 TLC01	CCBS02	LE9304, LC02	GSVxx / GSFxx	EFC-Sxx316	MCSS20086316
PFS1100316	PSS1060316	PFS2100316	PSS2060316	SPMS2006316	CCI6, CCM04	DI2010R5	DSW01 TLC01	CCBS02	LE9304, LC02	GSVxx / GSFxx	EFC-Sxx316	MCSS20106316
PFS1100316	PSS1050316	PFS2100316	PSS2050316	SPMS1805316	CCI6, CCM04	DI1810R5	DSW01 TLC01	CCBS02	LE9304, LC02	GSVxx / GSFxx	EFC-Sxx316	MCDS18105316
PFS1120316	PSS1050316	PFS2120316	PSS2050316	SPMS1805316	CCI6, CCM04	-	DSW01 TLC01	CCBS02	LE9304, LC02	GSVxx / GSFxx	EFC-Sxx316	MCDS18125316
PFS1120316	PSS1060316	PFS2120316	PSS2060316	SPMS2006316	CCI6, CCM04	-	DSW01 TLC01	CCBS02	LE9304, LC02	GSVxx / GSFxx	EFC-Sxx316	MCDS20126316

\*All accessories must be ordered separately

## Accessories for nVent HOFFMAN floor standing enclosures

There are many accessories available for nVent HOFFMAN floor standing enclosures and these are discussed in detail below. Due to the large number, the accessories have been grouped into the following categories:

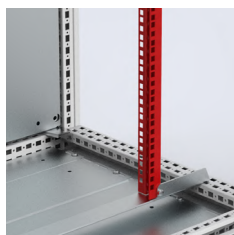
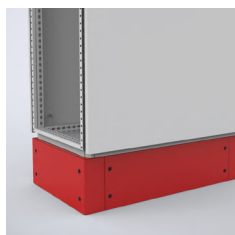
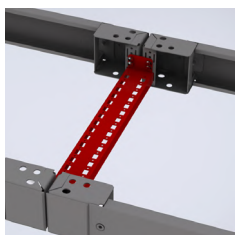
**Mounting and baying:** this includes baying brackets, plinths, wall fixing brackets and lifting lugs

**Internal:** this includes inner doors, mounting plates and profiles, separation plates and document holders

**19" rack mounting:** covers the range of 19" rack mount options, including brackets and profiles

**Lighting:** covers enclosure LED lighting options

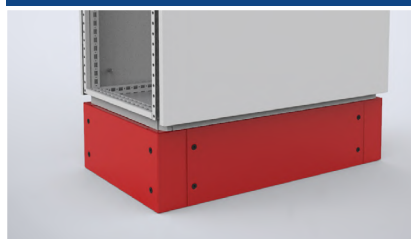
**Climate control:** this includes pressure compensation devices, filter fans and grilles, thermostats and air conditioners



## Mounting, baying and lifting accessories

This section includes plinths, wall fixing brackets, side panels, baying brackets and lifting lugs

### Plinths for mild steel enclosures - PFxxxx, PSxxxx, PCPxx



#### Description

PF and PS mild steel plinths are designed to mount underneath the enclosure to provide extra space between the installation floor/ground level and the enclosure's bottom plates, allowing easier cable installation. This extra space allows the installer to route the cables through the plinths for bayed enclosures. Note that the front/rear plinth and side plinths need to be ordered separately, to correctly match the enclosure width and depth. Manufactured from powder coated mild steel, these plinths are available in two heights - 100mm and 200mm.



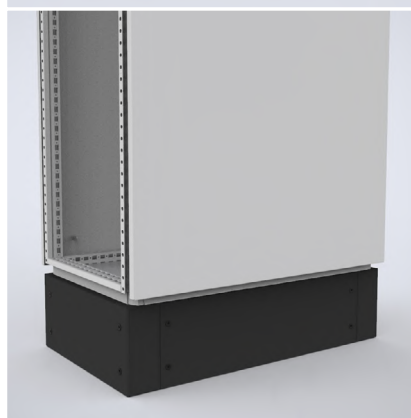
PCP plinth combining profiles connect between the plinth's front and rear corner pieces and act as a stabiliser and allow cables to be routed between bayed enclosures under the enclosure floor. It includes a 25mm hole pattern. When used with 200mm high plinths, the PCP may be mounted at three different heights – top, middle or bottom.

Note that the PCP are NOT compatible with stainless steel enclosures.



#### Ordering information – PF plinth front/rear 100mm high

**PF1040** - front/rear plinth, mild steel, H100 x W400mm  
**PF1050** - front/rear plinth, mild steel, H100 x W500mm  
**PF1060** - front/rear plinth, mild steel, H100 x W600mm  
**PF1080** - front/rear plinth, mild steel, H100 x W800mm  
**PF1100** - front/rear plinth, mild steel, H100 x W1000mm  
**PF1120** - front/rear plinth, mild steel, H100 x W1200mm



#### Ordering information – PF plinth front/rear 200mm high

**PF2040** - front/rear plinth, mild steel, H200 x W400mm  
**PF2050** - front/rear plinth, mild steel, H200 x W500mm  
**PF2060** - front/rear plinth, mild steel, H200 x W600mm  
**PF2080** - front/rear plinth, mild steel, H200 x W800mm  
**PF2100** - front/rear plinth, mild steel, H200 x W1000mm  
**PF2120** - front/rear plinth, mild steel, H200 x W1200mm

#### Ordering information – PS plinth sides 100mm high

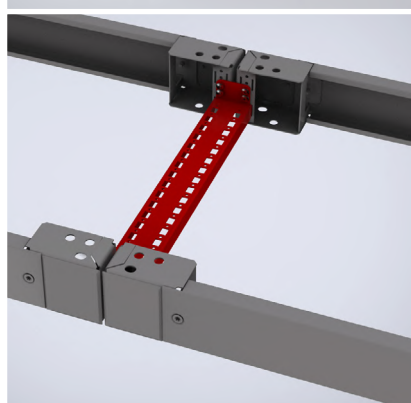
**PS1030** - plinth sides, mild steel, H100 x D300mm  
**PS1040** - plinth sides, mild steel, H100 x D400mm  
**PS1050** - plinth sides, mild steel, H100 x D500mm  
**PS1060** - plinth sides, mild steel, H100 x D600mm  
**PS1080** - plinth sides, mild steel, H100 x D800mm

#### Ordering information – PS plinth sides 200mm high

**PS2040** - plinth sides, mild steel, H200 x D400mm  
**PS2030** - plinth sides, mild steel, H200 x D300mm  
**PS2050** - plinth sides, mild steel, H200 x D500mm  
**PS2060** - plinth sides, mild steel, H200 x D600mm  
**PS2080** - plinth sides, mild steel, H200 x D800mm

#### Ordering information – PCP plinth combining profiles

**PCP04** - plinth combining profile, mild steel, D400mm  
**PCP05** - plinth combining profile, mild steel, D500mm  
**PCP06** - plinth combining profile, mild steel, D600mm  
**PCP08** - plinth combining profile, mild steel, D800mm

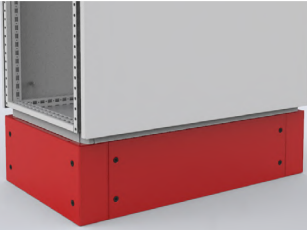

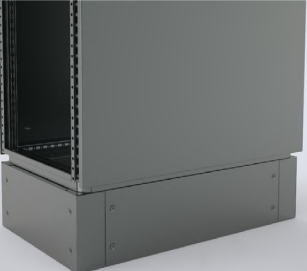


#### Material

PF front/rear plinths: corner pieces 2mm, panels 1.5mm mild steel, RAL 7022 structured powder coating  
 PS side plinths: 1.5mm steel plate, RAL 7022 structured powder coating  
 PCP plinth combining profile: 2mm steel plate, RAL 7022 structured powder coating



## Plinths for stainless steel floor standing enclosures - PFSxxxx, PSSxxx

	<b>Description</b> <p>PFS and PSS stainless steel plinths are designed to mount underneath the enclosure to provide extra space between the installation floor/ground level and the enclosure's bottom plates, allowing easier cable installation. This extra space allows the installer to route the cables through the plinths for bayed enclosures. Manufactured from AISI 316L stainless steel, these plinths are available in two heights of 100mm and 200mm.</p> <p>Note that the front/rear plinth and side plinths need to be ordered separately, to correctly match the enclosure width and depth.</p>
	<b>Ordering information – front/rear plinths 100mm high</b> <p><b>PFS1060316</b> - front/rear plinth, 316L S/S, H100 x W600mm  <b>PFS1080316</b> - front/rear plinth, 316L S/S, H100 x W800mm  <b>PFS1100316</b> - front/rear plinth, 316L S/S, H100 x W1000mm  <b>PFS1120316</b> - front/rear plinth, 316L S/S, H100 x W1200mm</p>
	<b>Ordering information – front/rear plinths 200mm high</b> <p><b>PFS2060316</b> - front/rear plinth, 316L S/S, H200 x W600mm  <b>PFS2080316</b> - front/rear plinth, 316L S/S, H200 x W800mm  <b>PFS2100316</b> - front/rear plinth, 316L S/S, H200 x W1000mm  <b>PFS2120316</b> - front/rear plinth, 316L S/S, H200 x W1200mm</p>
	<b>Ordering information – side plinths 100mm high</b> <p><b>PSS1040316</b> - plinth sides, 316L S/S, H100 x D400mm  <b>PSS1050316</b> - plinth sides, 316L S/S, H100 x D500mm  <b>PSS1060316</b> - plinth sides, 316L S/S, H100 x D600mm</p>
	<b>Ordering information – side plinths 200mm high</b> <p><b>PSS2040316</b> - plinth sides, 316L S/S, H200 x D400mm  <b>PSS2050316</b> - plinth sides, 316L S/S, H200 x D500mm  <b>PSS2060316</b> - plinth sides, 316L S/S, H200 x D600mm</p>
<b>Material</b> <p>AISI 316L grade 400 pre-grained stainless steel</p>	

## Plinth side panels for MPG console mild steel enclosures - PSTxxxx

	<b>Description</b> <p>PST plinth side panels are specifically designed for the MPG range of console enclosures, they should be used with the corresponding PF plinth front/rear.</p>
	<b>Ordering information 100mm high</b> <p><b>PST1040</b> - plinth side panels for MPG, H100 x D400mm  <b>PST1050</b> - plinth side panels for MPG, H100 x D500mm</p>
	<b>Ordering information 200mm high</b> <p><b>PST2040</b> - plinth side panels for MPG, H200 x D400mm  <b>PST2050</b> - plinth side panels for MPG, H200 x D500mm</p>
<b>Material</b> <p>1.5mm mild steel, RAL 7022 structured powder coating</p>	

## Wall fixing brackets for mild steel enclosures - CCB02



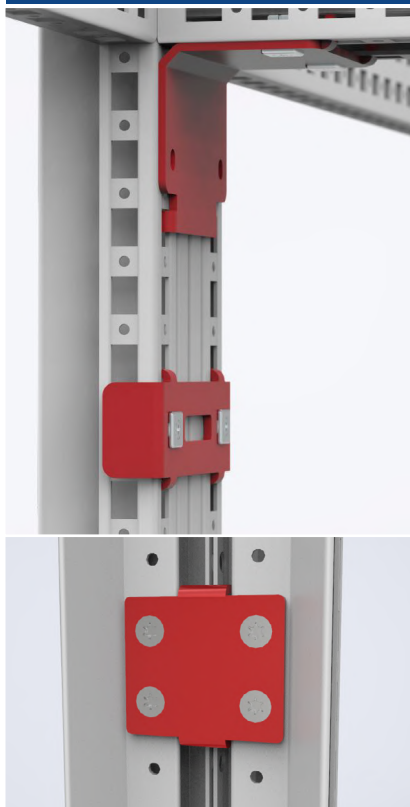
<b>Description</b>	<p>The CCB02 wall mounting/fixing brackets allow a floor standing enclosure to be secured to a vertical surface, in situations where the enclosure is top heavy or when the floor attachment is not sufficient to guarantee stability. It is compatible with all nVent HOFFMAN mild steel floor standing enclosures (MCS, MCD, MKS, MKD)</p> <p>Note that CCB02 are not recommended for stainless steel enclosures, use the CCBS02 instead</p>
<b>Ordering information</b>	<b>CCB02</b> – wall fixing bracket, supplied as a pack of two with M12 screws for attaching to the enclosure
<b>Material</b>	3mm zinc plated steel

## Wall fixing brackets for stainless steel enclosures - CCBS02



<b>Description</b>	<p>The CCBS02 wall mounting/fixing brackets allow a floor standing enclosure to be secured to a vertical surface, in situations where the enclosure is top heavy or when the floor attachment is not sufficient to guarantee stability. It is compatible with all nVent HOFFMAN stainless steel floor standing enclosures (MCSS, MCDS, EKSS, EKDS)</p>
<b>Ordering information</b>	<b>CCBS02</b> – wall fixing bracket, supplied as a pack of two with M12 screws for attaching to the enclosure
<b>Material</b>	3mm AISI 304 grade pre grained stainless steel

## Baying brackets for bayable mild steel and stainless steel enclosures - CCI6, CCM04, CCE6



<b>Description</b>	<p>CCI6 and CCM04 Snapline click in quick-mount internal baying brackets allow quick baying of two or more nVent HOFFMAN enclosures into a single enclosure assembly. Tool-free installation saves approximately 14 minutes per baying join when compared to traditional, screw-based baying brackets. These brackets are compatible with both mild steel and stainless steel enclosures and satisfy the IEC 62208 standard. CCI6 baying brackets can be used to bay enclosures on site; CCM04 corner baying brackets are required if the bayed enclosure assembly is to be lifted and/or freighted in its bayed state.</p> <p>CCE06 external baying brackets are mounted on the outside hole pattern of the frame and create a direct earthing connection between the enclosure frames.</p> <p>Note that CCE06 brackets are only suitable for mild steel enclosures.</p>
<b>Ordering information</b>	<p><b>CCI6</b> – internal Snapline baying bracket, supplied in set of 6, suits mild steel and stainless steel enclosures</p> <p><b>CCM04</b> – internal corner Snapline baying bracket, supplied as set of 4, suits mild steel and stainless steel enclosures</p> <p><b>CCE06</b> – external baying bracket, supplied as set of 6 with mounting accessories – only suitable for mild steel enclosures</p>
<b>Material</b>	3mm zinc plated steel

## Baying brackets for baying nVent HOFFMAN mild steel enclosures to Rittal - TS8, CCTV06



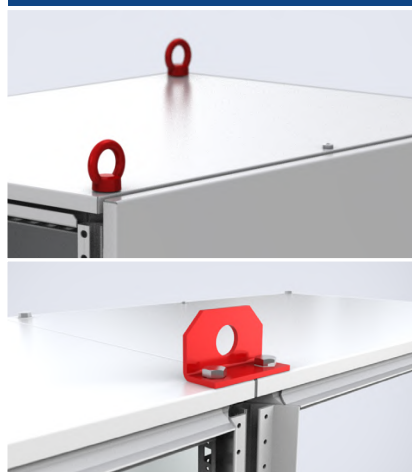
<b>Description</b>	<p>The CCTV06 baying kit allows an nVent HOFFMAN mild steel bayable enclosure to be bayed with a Rittal TS8. This can be used when an existing TS8 system needs to be expanded.</p> <p>Note that CCTV06 brackets are only suitable for mild steel enclosures. Please contact NHP for more information.</p>
<b>Ordering information</b>	<b>CCTV06</b> – internal baying bracket nVent HOFFMAN to Rittal TS8, supplied in set of 6 with mounting accessories
<b>Material</b>	3mm zinc plated steel

## Side panels for bayable enclosures - SPMxxxxR5, SPMSxxxx316



<b>Description</b>	<p>SPM..R5 and SPMS..316 side panels ensure that the ingress protection of the enclosure is maintained so that electrical components inside can operate without disturbance and protect personnel from injuries. Supplied as a set of 2 panels with mounting accessories – one set is required per single enclosure or per bayed enclosure assembly. The SPM..R5 side panels are for use with mild steel enclosures. The SPMS..316 side panels are for use with stainless steel enclosures.</p>
<b>Ordering information – mild steel side panels</b>	<p><b>SPM1804R5</b> – side panels (qty 2), mild steel, H1800 x D400mm</p> <p><b>SPM1805R5</b> – side panels (qty 2), mild steel, H1800 x D500mm</p> <p><b>SPM1806R5</b> – side panels (qty 2), mild steel, H1800 x D600mm</p> <p><b>SPM1808R5</b> – side panels (qty 2), mild steel, H1800 x D800mm</p> <p><b>SPM2004R5</b> – side panels (qty 2), mild steel, H2000 x D400mm</p> <p><b>SPM2005R5</b> – side panels (qty 2), mild steel, H2000 x D500mm</p> <p><b>SPM2006R5</b> – side panels (qty 2), mild steel, H2000 x D600mm</p> <p><b>SPM2008R5</b> – side panels (qty 2), mild steel, H2000 x D800mm</p>
<b>Ordering information – stainless steel side panels</b>	<p><b>SPMS1805316</b> – side panels (qty 2), 316L S/S, H1800 x D500mm</p> <p><b>SPMS2006316</b> – side panels (qty 2), 316L S/S, H2000 x D600mm</p>
<b>Material</b>	<p>SPM...R5 side panels: 1.5mm mild steel, RAL 7035 structured powder coating</p> <p>SPMS...316 side panels: 1.5mm AISI 316L grade 400 pre-grained stainless steel</p>

## Lifting accessories for enclosures - LE9304, LC02



<b>Description</b>	<p>LE lifting eye bolts mount directly to the enclosure corners for when lifting operations are required. Complies with DIN 580 lifting requirements. M12 thread. 3400N per lifting eye with max angle of 45°. The LE9304 may be used to lift individual enclosures or to lift bayed enclosures in conjunction with the LC lifting device.</p> <p>The LC lifting device is recommended for optimal weight distribution when lifting bayed enclosures. Note that CCM04 corner baying brackets must be fitted to the bayed assembly for lifting.</p> <p>Note: the lifting accessories are also available in stainless steel versions. Please contact NHP for details.</p>
<b>Ordering information</b>	<p><b>LE9304</b> – lifting eye bolts, supplied as set of 4</p> <p><b>LC02</b> – lifting device, supplied as set of 2 with mounting accessories</p>
<b>Material</b>	Zinc plated steel

## Internal accessories

This section includes all internal mounting accessories such as inner doors, mounting profiles, separation plates and brackets EXCEPT 19" rack equipment (separate section)

### Inner doors for floor standing enclosures - DIxxxxR5



#### Description

DI inner doors provide a hinged mounting surface for equipment such as displays, indicators or switches behind a standard or glazed front door, while covering other components and preventing unauthorised access. A mounting space of 80 mm is available between the doors when the inner door is in the most forward position. Can be adjusted in depth by steps of 25 mm. The inner door is equipped with two double-bit 3 mm locks. Supplied with mounting accessories. DI inner doors are compatible with both mild steel and stainless steel enclosures.

#### Ordering information

**DI1606R5** – inner door, H1600 x W600mm

**DI1608R5** – inner door, H1600 x W800mm

**DI1806R5** – inner door, H1800 x W600mm

**DI1808R5** – inner door, H1800 x W800mm

**DI1810R5** – inner door, H1800 x W1000mm

**DI2006R5** – inner door, H2000 x W600mm

**DI2008R5** – inner door, H2000 x W800mm

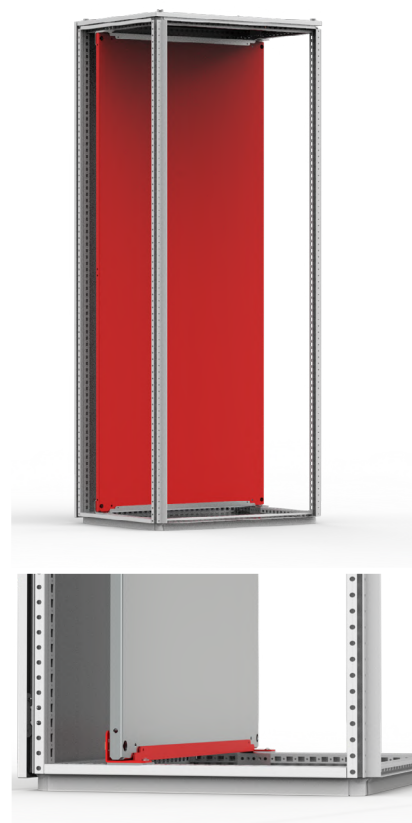
**DI2010R5** – inner door, H2000 x W1000mm

Note: other sizes are available on request, however a longer lead-time and minimum order quantity may apply. Please contact NHP with your query.

#### Material

1.5mm mild steel with RAL 7035 structured powder coating

### Wide mounting plate and traverse sliding profile for bayable enclosures - MPWxxxx and MTSxxxx



#### Description

MPW extra wide mounting plates offer more mounting space than the standard mounting plate and can have components mounted before being fitted within the enclosure. The MPW wide mounting plate requires the corresponding width MTS traverse sliding profiles to be mounted. Supplied as a set of two, the MTS sliding profile is depth-adjustable in 25mm steps.

Note - the MPW wide mounting plate cannot be fitted to compact (non-bayable) enclosures as it must be installed from the side

#### Ordering information – MPW wide mounting plates

**MPW1806** – wide mounting plate, H1800 x W600mm

**MPW1808** – wide mounting plate, H1800 x W800mm

**MPW1810** – wide mounting plate, H1800 x W1000mm

**MPW1812** – wide mounting plate, H1800 x W1200mm

**MPW1816** – wide mounting plate, H1800 x W1600mm

**MPW2005** – wide mounting plate, H2000 x W500mm

**MPW2006** – wide mounting plate, H2000 x W600mm

**MPW2008** – wide mounting plate, H2000 x W800mm

**MPW2010** – wide mounting plate, H2000 x W1000mm

**MPW2012** – wide mounting plate, H2000 x W1200mm

**MPW2016** – wide mounting plate, H2000 x W1600mm

#### Ordering information – MTS traverse sliding profiles

**MTS500** – traverse sliding profiles (qty 2), W500mm

**MTS600** – traverse sliding profiles (qty 2), W600mm

**MTS800** – traverse sliding profiles (qty 2), W800mm

**MTS1000** – traverse sliding profiles (qty 2), W1000mm

**MTS1200** – traverse sliding profiles (set of 2), W1200mm

**MTS1600** – traverse sliding profiles (set of 2), W1600mm

#### Material

MPW: 3mm galvanised steel

MTS: 3mm zinc plated steel



## 180 degree hinge kit - DHN180



**Description** The DHN180 adjustable 180 degree hinge kit makes it possible to open the doors 180°, even when enclosures are bayed together. Machining is required to install the DHN180

**Ordering information** **DHN180** – 180 degree hinge kit, supplied as a set of 4 with mounting accessories

**Material** Die-cast alloy, structured blue finish

## Mounting profiles, unidirectional Snapline - CLPFxxx



**Description** The CLPF profile system is a 40mm wide and 25mm high mounting profile can be mounted in all directions on the enclosure's frame, providing full flexibility for the mounting of accessories, components and other equipment. Two rows of hole patterns for cage nut fixing and self-tapping screws are provided. The CLPF is a Snapline accessory and can be quickly and easily installed without any tools. All CLPF profiles are supplied as a set of 4.

Note – for CLPF400 – CLPF 1200, the maximum loading is 800N horizontal and 1000N vertical; for CLPF1400 – CLPF2000, only vertical loads are allowed

**Ordering information**

- CLPF400** – Snapline mounting profile W/D 400mm, 800/1000N maximum loading, set of 4
- CLPF500** – Snapline mounting profile W/D 500mm, 800/1000N maximum loading, set of 4
- CLPF600** – Snapline mounting profile W/D 600mm, 800/1000N maximum loading, set of 4
- CLPF800** – Snapline mounting profile W/D 800mm, 800/1000N maximum loading, set of 4
- CLPF1000** – Snapline mounting profile W/D 1000mm, 800/1000N maximum loading, set of 4
- CLPF1200** – Snapline mounting profile W/D 1200mm, 800/1000N maximum loading, set of 4
- CLPF1400** – Snapline mounting profile W/D 1400mm, only vertical loads allowed, set of 4
- CLPF1600** – Snapline mounting profile W/D 1600mm, only vertical loads allowed, set of 4
- CLPF1800** – Snapline mounting profile W/D 1800mm, only vertical loads allowed, set of 4
- CLPF2000** – Snapline mounting profile W/D 2000mm, only vertical loads allowed, set of 4

Note: other sizes are available on request – however a longer lead-time and minimum order quantity may apply – please contact NHP with your query.

**Material** Zinc plated steel

## Mounting plate reinforcement profiles - MPRxxxx, MPWRxxxx



**Description** The MPR and MPWR reinforcement kits stiffen the mounting plate and allow heavy components to be mounted while dampening down any vibrations. The MPR suits standard mounting plates (as supplied with the enclosure), while the MPWR suits the optional MPW wide mounting plate.

Supplied as a kit of two profiles with mounting accessories It is recommended for use with mounting plates wider than 1000mm. The profiles should be equally spaced on the rear of the mounting plate.

**Ordering information**

- MPR1000** – reinforcing profile kit 1000mm wide
- MPR1200** – reinforcing profile kit 1200mm wide
- MPR1600** – reinforcing profile kit 1600mm wide
- MPWR1000** – reinforcing profile kit, 1000mm wide, for MPW
- MPWR1200** – reinforcing profile kit, 1200mm wide, for MPW

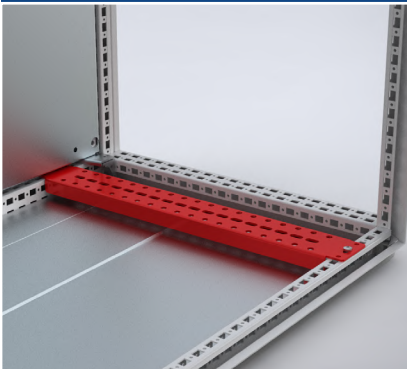
**Material** 2mm zinc plated steel

### Filler plate for bayable enclosures - MPFxxxx



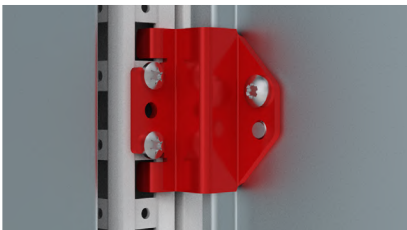
<b>Description</b>	MPF filler plates covers the space between pairs of adjacent mounting plates in a bayed enclosure assembly, to provide a continuous working surface. Snapline technology allows fast, easy installation without the use of tools. Supplied with mounting accessories. The MPF is compatible with both mild steel and stainless steel enclosures.
<b>Ordering information</b>	<b>MPF1800</b> – filler plate suits 1800mm high enclosures <b>MPF2000</b> – filler plate suits 2000mm high enclosures
<b>Material</b>	2mm zinc plated steel

### Carrier bars - CBxxx



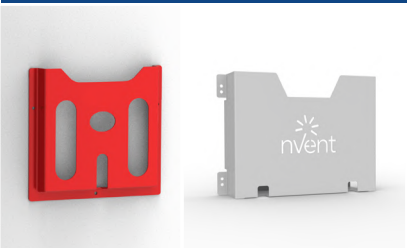
<b>Description</b>	CB carrier bars, fitted in the base of the floor standing enclosure, allow heavy equipment such as transformers to be mounted. They can be adjusted in width or depth within the enclosure's frame. The CB are supplied as a pair with mounting accessories. Note: observe the maximum permissible load (varies by model).
<b>Ordering information</b>	<b>CB400</b> – carrier bars W/D 400mm, 2500N max loading, set of 2 <b>CB500</b> – carrier bars W/D 500mm, 2100N max loading, set of 2 <b>CB600</b> – carrier bars W/D 600mm, 1800N max loading, set of 2 <b>CB800</b> – carrier bars W/D 800mm, 1300N max loading, set of 2
<b>Material</b>	3mm galvanised steel

### Separation plates - SPDxxx and mounting brackets CCJ12



<b>Description</b>	The SPD separation plate separates bayed enclosures while maintaining the IP rating, creating individual spaces for components to be mounted. The SPD provides IP43 between the two enclosures and is compatible with CCI6 and CCM04 baying brackets. CCJ12 mounting brackets are required to fit the SPD inside the bayed enclosure assembly.
<b>Ordering information</b>	<b>SPD1804</b> – separation plate H1800 x D400mm <b>SPD1805</b> – separation plate H1800 x D500mm <b>SPD2004</b> – separation plate H2000 x D400mm <b>SPD2005</b> – separation plate H2000 x D500mm <b>CCJ12</b> – baying kit for separation plate, supplied as set of 12 with mounting accessories
<b>Material</b>	SPD: 1.5mm zinc plated steel CCJ12: 3mm zinc plated steel

### Document holders DRA4 - DRBxxxR5

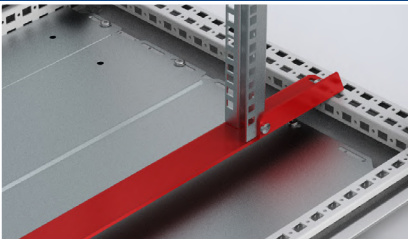
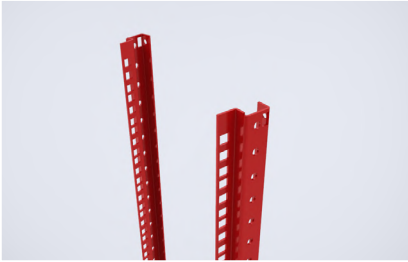
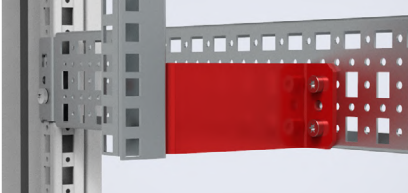
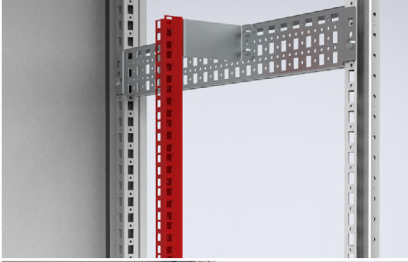
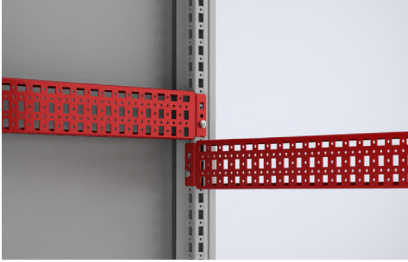



<b>Description</b>	Document holders/document can be mounted in the enclosure to ensure that the required documents are readily available. The DRA4 document pocket, with a usable depth of 30mm suits documents up to A4 in size and is made from polymer and attaches easily with double sided tape. The DRBxxxR5 range of document pockets, with a usable depth of 68mm, is designed for mounting to the enclosure door frame is made from powder coated mild steel and is available in several sizes to suit various width enclosure doors.
<b>Ordering information</b>	<b>DRA4</b> – self-adhesive document pocket A4 <b>DRB0303R5</b> – universal document pocket 300mm wide <b>DRB600R5</b> – document pocket for W600mm doors <b>DRB800R5</b> – document pocket for W800mm doors
<b>Material</b>	DRA4: thermoplastic, RAL 7035 DRBxxxR5: 2mm zinc plated steel with RAL 7035 structured powder coating

# 19" rack mounting accessories

This section lists the various 19" rack mount options that are available.  
Note that certain accessories must be used together to complete the installation.

## 19" brackets and profiles - CIBxxx, CIC04, CIPxx, CIPPxx, CIWRxx

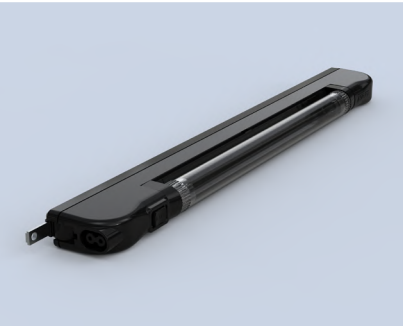
	<b>Description CIB</b>	CIB profiles allow 19" CIP vertical profiles to be mounted so that equipment designed for 19" rack mounting can be installed. CIB are available in two widths, to suit 600mm and 800mm wide enclosures and are compatible with both mild steel and stainless steel models. Supplied as a set of 2 with mounting accessories.
	<b>Ordering information CIB</b>	<b>CIB600</b> – 19" profile fixing brackets, W600mm, set of 2 <b>CIB800</b> – 19" profile fixing brackets, W800mm, set of 2
	<b>Material CIB</b>	3mm zinc plated steel
	<b>Description CIP</b>	CIP 19" full height 19" profiles allow 19" rack mounted equipment to be installed in floor standing enclosures. Available in a range of heights, they are supplied as set of 2 with mounting accessories. Note that CIB profiles are required to mount the CIP
	<b>Ordering information CIP</b>	<b>CIP29</b> – 19" profiles H1400mm / 24RU, supplied as a set of 2 <b>CIP38</b> – 19" profiles H1800mm / 38RU, supplied as a set of 2 <b>CIP42</b> – 19" profiles H2000mm / 42RU, supplied as a set of 2
	<b>Material CIP</b>	2mm zinc plated steel
	<b>Description CIC</b>	CIC brackets allow the CIPP 19" partial height profiles to be installed in 800mm wide enclosures. They are supplied as a set of 4 with mounting accessories
	<b>Ordering information CIC</b>	<b>CIC04</b> – brackets for partial height 19" fixing, set of 4
	<b>Material</b>	3mm zinc plated steel
	<b>Description CIPP</b>	CIPP partial height 19" mounting profiles are both height and depth adjustable for flexible mounting of 19" rack equipment. They are supplied as a set of 2 with mounting accessories. Note that CIPP brackets require CIC and/or CIWR to complete the installation
	<b>Ordering information CIPP</b>	<b>CIPP06</b> – 19" mounting profiles partial height 350mm / 6RU <b>CIPP11</b> – 19" mounting profiles partial height 550mm / 11RU <b>CIPP15</b> – 19" mounting profiles partial height 750mm / 15RU <b>CIPP18</b> – 19" mounting profiles partial height 875mm / 18RU
	<b>Material CIPP</b>	2mm zinc plated steel
	<b>Description CLPK</b>	CLPK click in profiles allow CIP, CIPP and other accessories and components to be installed. CLPK are fixed directly to the enclosure frame and so do not require any additional brackets. Supplied as a set of 4.
	<b>Ordering information CLPK</b>	<b>CLPK400</b> – click in profile W/D400mm, supplied as a set of 4 <b>CLPK500</b> – click in profile W/D500mm, supplied as set of 4 <b>CLPK600</b> – click in profile W/D600mm, supplied as a set of 4 <b>CLPK800</b> – click in profile W/D800mm, supplied as a set of 4
	<b>Material CLPK</b>	1.5mm zinc plated steel
	<b>Description CIWR</b>	CIWR 19" width reducers are designed to mount in 800mm wide enclosures and allow full height CIP or partial height CIPP 19" profiles to be mounted, with continuous depth adjustment. CIWR can also be used to reinforce full height CIP 19" profiles. The maximum permissible load is 5000N on 2 pairs and 8000N on 3 pairs of CIWR. The CIWR are supplied as a set of 2 with mounting accessories mounting of 19" rack equipment. They are supplied as a set of 2 with mounting accessories. Note that CIPP brackets require CIC and/or CIWR to complete the installation
	<b>Ordering information CIWR</b>	<b>CIWR8196</b> – 19" width reducers for W800 x D600mm enclosures, supplied as a pair with mounting accessories <b>CIWR8198</b> – 19" width reducers for W800 x D800mm enclosures, supplied as a pair with mounting accessories
	<b>Material CIWR</b>	2mm zinc plated steel

## Enclosure lighting

This section provides a high-level overview of the climate control options available. Please refer to the Climate Control Selection Guide or contact NHP for more details.

Door switch - DSW01, TLCS01	
	<b>Description</b> Door switches allow lights or other electrical devices to turn on or off automatically when the enclosure door is opened. They include a NO (normally open) and one NC (normally closed) volt-free contact. Designed to be mounted directly to the enclosure frame. The mounting locations ensure that the switch is always positioned for correct operation once installed
	<b>Ordering information</b> <p><b>DSW01</b> – Door switch 3A / 240V, with M20 cable entry, supplied with mounting accessories</p> <p><b>TLCS01</b> – Door switch for TLC range of LED lights, supplied with 1.5m long cable</p>
	<b>Material</b> Polymer body

Enclosure lights - LED0254xxxx, TL87035	
	<b>Description</b> LED 025 enclosure lights, manufactured by Stego, are suitable for all enclosures. They are available in 100-240V AC and 24-48V DC versions in both screw mount and magnet mount. With 400 lumens, 120° illumination angle and daylight white (6000K) colour, they provide good illumination inside the enclosure.
	<p>Please contact NHP for additional information and other options.</p>
	<b>Ordering information</b> <p><b>LED02540001</b> – LED 025 lamp 5W/400Lm 100-240V AC, screw mount, ON/OFF switch, supplied with connector</p> <p><b>LED02540101</b> – LED 025 lamp 5W 24-48V DC, screw mount, motion detector, supplied with connector</p>
	<b>Material</b> Transparent plastic housing
	<b>Description:</b> The TLCL87035 is a compact design 7.2W LED light suitable for mounting on 19" rack profiles. Available in both 220-240V AC and 24V DC versions, the TLCL87035 provides 945Lm of illumination and a service life of 50,000 hours.
	<b>Ordering information</b> <p><b>TLCL87035</b> – compact LED light 7.2W/945Lm 220-240V AC, magnetic &amp; screw mount, door switch compatible</p> <p><b>TLCL8703524</b> – compact LED light 7.2W/945Lm 24V DC, magnetic &amp; screw mount, door switch compatible</p>
	<b>Optional accessories</b> <b>TLCS01</b> – Door switch for TLCL lights, must be ordered with cable <b>TLCS600</b>
	<b>Material</b> PC-ABS housing



## Climate control

This section provides a high-level overview of the climate control options available. Please refer to the Climate Control Selection Guide or contact NHP for more details.

### Rain hoods for floor standing enclosures - MSSTxxxx



<b>Description</b>	<p>MSST rain hoods feature a sloped roof and prevent water dripping into the enclosure when the door is opened. Manufactured from AISI 316L grade stainless steel, MSST rain hoods are supplied with mounting accessories. Rain hoods are recommended where the enclosure location is exposed to inclement weather.</p> <p>Note: rain hoods are not compatible with bayed enclosures</p>
--------------------	--

<b>Ordering information</b>	<p><b>MSST0640316</b> – rain hood, 316L S/S, W600 x D400mm</p> <p><b>MSST0840316</b> – rain hood, 316L S/S, W800 x D400mm</p> <p><b>MSST1040316</b> – rain hood, 316L S/S, W1000 x D400mm</p> <p><b>MSST1240316</b> – rain hood, 316L S/S, W1200 x D400mm</p> <p><b>MSST1640316</b> – rain hood, 316L S/S, W1600 x D400mm</p>
-----------------------------	---

<b>Material</b>	1.5mm AISI 316L grade 400 pre-grained stainless steel
-----------------	---

### Fan covers - EFCSxxxx



<b>Description</b>	<p>EFCS fan covers feature a sloped roof and prevent rain and water in hose-down applications hitting the filter fan or filter grille. Supplied with mounting accessories. Made from 316 grade stainless steel, they are compatible with both mild and stainless steel enclosures and should always be used where the enclosure is likely to be exposed to rain or hose down cleaning. The EFCS is available in three sizes to suit different sizes of the GSV filter fans and GSF filter grilles</p>
--------------------	---

<b>Ordering information</b>	<p><b>EFCS20316</b> – fan cover H275 x W175 x D100mm, suits GSV1000, GSF10 sizes</p> <p><b>EFCS2530316</b> – fan cover H375 x W275 x D100mm, suits GSV1500, GSV250, GSF15, GSF20 sizes</p> <p><b>EFCS5060316</b> – fan cover H450 x W350 x D100mm, suits GSV30, GSF30 sizes</p>
-----------------------------	---

<b>Material</b>	1.5mm AISI 316L grade stainless steel
-----------------	---------------------------------------

## Climate control options

Depending on application and ambient conditions, additional climate control may be required. NHP has a complete range of cooling and heating products to ensure your equipment is operating at the right temperature.

	Outdoor	Outdoor harsh or wash-down environments
Cooling to ambient temperature	 <p>GSV, GSF series</p>	 <p>CVO stainless steel</p>
Cooling below ambient temperature	 <p>CVO series</p>	 <p>CVO stainless steel</p>
Heating/preventing condensation in small enclosures	<div>    </div> <p>CSK060 series      HGK047 series      HG140 series</p>	
Heating/preventing condensation in large enclosures	<div>         </div> <p>CS series      HVL031 series      HGL046 series      CR0270 series      CR130 series      HVI series      DA28455      DD084</p>	

Please refer to the NHP Climate Control Easy Selection Guide for more information

## Filter fans GSVxxxx and filter grilles GSFxx



### Description

Kryos<sup>3</sup> GSV filter fans and GSF filter grilles, manufactured by Cosmotec, are easy to install with clip-on mounting. GSV filter fans have efficient filter mats, screwless terminals, long life ball bearing fans and have a reversible fan motor for air in or air out. Available in a range of sizes and air flows, they are suitable for all floor standing enclosures and have IP54 protection. They can be used both indoors and outdoors, however a suitable EFCS fan cover should be installed in locations where inclement weather, or hose-down cleaning may occur. Replacement filter mats are available.

For more information on the GSV/GSF range please refer to the Climate Control Selection Guide and Price List Catalogue.

### Ordering information – filter fans

**GSV1000211** – filter fan H119 x W119 x D58mm 24V DC 35m<sup>3</sup>/hr  
**GSV1000220** – filter fan H119 x W119 x D58mm 230V AC 35m<sup>3</sup>/hr  
**GSV1500211** – filter fan H152 x W152 x D75mm 24V DC 67m<sup>3</sup>/hr  
**GSV1500220** – filter fan H152 x W152 x D75mm 230V AC 67m<sup>3</sup>/hr  
**GSV2000211** – filter fan H204 x W204 x D98mm 24V DC 108m<sup>3</sup>/hr  
**GSV2000220** – filter fan H204 x W204 x D98mm 230V AC 108m<sup>3</sup>/hr  
**GSV2500211** – filter fan H250 x W250 x D118mm 24V DC 190m<sup>3</sup>/hr  
**GSV2500220** – filter fan H250 x W250 x D118mm 230V AC 190m<sup>3</sup>/hr  
**GSV2501220** – filter fan H250 x W250 x D99mm 230V AC 270m<sup>3</sup>/hr  
**GSV3000220** – filter fan H318 x W318 x D139mm 230V AC 500m<sup>3</sup>/hr  
**GSV3001220** – filter fan H318 x W318 x D135mm 230V AC 700m<sup>3</sup>/hr  
**GSV3002220** – filter fan H318 x W318 x D161mm 230V AC 850m<sup>3</sup>/hr  
**GSV3002262** – filter fan H318 x W318 x D161mm 400V AC 850m<sup>3</sup>/hr

### Ordering information – filter grilles

**GSF10** – filter grille H119 x W119 x D29mm  
**GSF15** – filter grille H152 x W152 x D33mm  
**GSF20** – filter grille H204 x W204 x D34mm  
**GSF25** – filter grille H250 x W250 x D48mm  
**GSF30** – filter grille H318 x W318 x D34mm

### Ordering information – replacement filter mats

**AVAFAGS10** – replacement filter mat IP54 suits GSV1000, GSF10, pack of 10  
**AVAFAGS15** – replacement filter mat IP54 suits GSV1500, GSF15, pack of 10  
**AVAFAGS20** – replacement filter mat IP54 suits GSV2000, GSF20, pack of 10  
**AVAFAGS25** – replacement filter mat IP54 suits GSV2500, GSF25, pack of 10  
**AVAFAGS30** – replacement filter mat IP54 suits GSV3000, GSF30, pack of 10

### Material

Filter fan and filter grille body: ABS  
 Filter mat: synthetic fibre

Pressure compensation devices - DA284xx



Description

DA284 pressure compensation devices, manufactured by Stego, are easy to install and provide effective pressure equalisation between the inside and outside of the enclosure. The one-way membrane allows moisture to escape while preventing the ingress of liquid water or dirt and debris.

AS3000:2018 clause 1.7.2 states that “a breathing/pressure equalization valve shall be installed to assist with changes in humidity and drainage of moisture”. Therefore, to comply with the new AS3000:2018 standards, pressure compensation devices must be fitted to all enclosures where condensation is likely to occur - in practice all enclosures installed outside.

Pressure compensation devices should always be installed in pairs on opposite sides of the enclosure. The Stego DA284 are available in stainless steel and plastic and have an ingress protection rating of IP66 according to EN 60259 and IP69K according to EN 400050-9.

Ordering information – pressure compensation devices

- DA28400 – pressure compensation device, plastic, M40 IP66/X9K (QTY 2)
- DA28455 – pressure compensation device, AISI 303 grade stainless steel, M40 IP66/X9K (QTY 1)
- DA28455S – pressure compensation device, AISI 316L grade stainless steel, M40 IP66/X9K (QTY 1)
- DA28420000 – pressure compensation device, plastic, M40 IP66, snap/clip in mounting (QTY 1)

Material

Varies by model

NHP can provide custom enclosure solutions for specific projects (example shown below). Note that longer lead-times and minimum order quantity may apply. Please contact NHP with your query.





## Applications and key benefits

The nVent HOFFMAN floor standing enclosure range has been designed with flexibility and user friendliness in mind and provides robust protection to valuable equipment installed inside the enclosure. Intended for harsh environments, nVent HOFFMAN floor standing enclosures are ideally suited to applications in the following industries:

- Heavy industry
- Food and beverage
- Commercial and retail
- Mining
- Water and waste water treatment plants
- Healthcare and hospitality
- Marine environments
- Renewable energy
- Other arduous environments

### The nVent HOFFMAN floor standing enclosure range offers several key benefits:

- Available in a wide range of standard sizes ex-stock, minimising delivery time
- The mild steel and stainless steel versions are built on the same platforms, ensuring compatibility of accessories across the range and eliminating the need to stock multiple accessory versions
- The innovative click-in profile system provides flexibility and saves assembly time
- The continuous welding eliminates weak spots and provides rigidity, thus ensuring the ingress protection rating is maintained
- The smooth, fully polished finish on the stainless steel versions eliminates locations where bacteria can accumulate and facilitates easy cleaning, particularly important in food and beverage applications
- The uniform powder coating thickness and full corner coverage, together with the inherent rigidity of the enclosure, eliminates the possibility of paint cracking on corners, thus maximising corrosion protection
- An optional rain hood can be fitted for outdoor applications, prolonging enclosure life and protecting the internal components

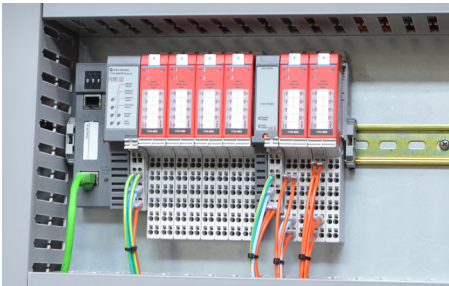
Certifications for nVent HOFFMAN floor standing enclosure range:





## Technical information

<b>Material (body):</b>	1.35mm (MKS, MKD) 1.5mm mild steel (MCS, MCD) / 1.5mm AISI 316L stainless steel (EKSS, EKDS, MCSS, MCDS)
<b>Material (door):</b>	2mm mild steel (MCS, MCD, MKS, MKD) / 2mm AISI 316L stainless steel (EKSS, EKDS, MCSS, MCDS)
<b>Finish:</b>	Mild steel: RAL 7035 structured powder coat Stainless steel: 400 pre grained with fully polished welds
<b>Lock:</b>	nVent HOFFMAN customised Espagnolette 4-point locking system with enhanced security click indicator to provide positive indication whether the enclosure is locked or unlocked. Self positioning flat locking rods provide smooth opening and closing. Double door models feature a locking system fitted to the slave door as standard. Standard zamak lift handle is finished in either RAL 5013 (mild steel models) or chrome (stainless steel models).
<b>Material (mounting plate):</b>	Galvanised steel, 3mm
<b>Ingress protection:</b>	IP55 or IP66 (model dependant)
<b>Impact resistance:</b>	IK10 (20 Joules)



Example of an EKSS enclosure built by an internationally recognised provider of value engineered automation solutions for the food and beverage sector.

## NHP's customised solution manufacturing capabilities

### Value-add

NHP is renowned in the electrical industry for our manufacturing capability – a sentiment that clearly reflects the market's increasing demand for 'value-added' products and solutions. In saying this, understanding what value means to different customers and projects isn't as simple as it sounds and this is where being local makes all the difference. With a local presence across the length and breadth of Australia and New Zealand our customers recognise that when we say we understand their needs, we really mean it.

### Skilled personnel

Combining the strength of our quality product portfolio with highly skilled personnel, we take the time to understand your manufacturing requirements to ensure we deliver maximum project success. It is this ability to understand local and international markets and their relevant standards and compliance requirements that apply to each that allows us to better serve your needs with tailored manufactured solutions.

### National Manufacturing and Distribution Centre

Our National Manufacturing and Distribution Centre in Laverton, Victoria, highlights NHP's commitment to local manufacturing and expertise. At this state-of-the-art facility, our expert team brings together a range of manufacturing solutions under one roof, enabling us to provide you with what you want, when you want it. With interactive tours of the manufacturing and distribution facility available, visitors are able to view and experience the cutting edge technology and quality product that is brought to life at the facility. Please note that tours are available by appointment only.



## Why NHP?

While our customers' challenges may be complex, their ultimate goal is simple - run a profitable, safe and sustainable operation.

NHP is committed to servicing the needs of our customers. With more than 50 years of experience in the electrical and engineering industry, our specialist teams work collaboratively to design and deliver solutions to maximise the success of your project.

We bring together internationally recognised automation, motor control and power distribution products with local knowledge and expertise to deliver best practice services from concept design through to installation and after-sales service, including project management.

### A partnership with NHP will provide you with:



24/7/365  
emergency service



Extensive local  
stockholding



Service network throughout  
Australia and New Zealand



NHP project  
management



Customised  
manufactured solutions



Extensively trained and  
qualified service technicians



nhp.com.au  
1300 647 647  
sales@nhp.com.au

nhpnz.co.nz  
0800 647 647  
sales@nhp-nz.com

**NHP Electrical Engineering Products**

A.B.N. 84 004 304 812

© COPYRIGHT NHP 2025

26BCH 03/25