

Standard enclosures

Quick selection guide

Smart Distribution



 nhp.com.au

 1300 647 647

 nhpsales@nhp.com.au





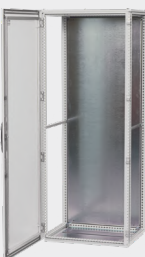



Standard enclosures quick selection matrix

[Click image to go to selection](#)

Terminal boxes / industrial enclosures 95 x 65 x 60mm – 560 x 380 x 180mm		
	Plastic	Metal
Indoor	 <div>Economic</div> <p>Acrylonitrile butadiene styrene</p>	 <div>Economic</div> <p>Mild steel</p>
Indoor / outdoor (UV rated)	 <div>Economic</div> <p>Polycarbonate</p>	 <div>Premium</div> <p>Stainless steel</p>

Wall mount enclosures 300 x 200 x 180mm – 1400 x 1000 x 300mm		
	Plastic	Metal
Indoor	 <div>Economic</div> <p>Acrylonitrile butadiene styrene</p>	 <div>Economic</div> <hr/>  <div>Standard</div> <p>Mild steel</p>
Indoor / outdoor (UV rated)	 <div>Premium</div> <p>Glass fibre reinforced polycarbonate</p>	 <div>Premium</div> <p>Stainless steel</p>

Not sure what material to choose? [Click here](#)

Floor standing enclosures 1600 x 600 x 400mm – 2000 x 1200 x 600mm				
	Mild steel		Stainless steel	
Stand-alone Comes with side covers				
	Single door	Double door	Single door	Double door
Bayable extendable Purchase side covers separately				
	Single door	Double door	Single door	Double door



Terminal boxes

Terminal boxes are designed to offer a secure and protective enclosure for electrical connections, safeguarding against accidental contact, dust, moisture and other environmental factors.



ABS plastic - NLP terminal box range



- IP65 ingress protection / IK07 impact resistance
- Grey base RAL 7035 with grey or transparent cover
- Halogen free and RoHS compliant
- Cover screws - wire seal compatible
- Plain cover for printing, stickers and switches



Dimensions (mm)			Enclosure		Accessories below must be ordered separately		
					Mounting plate (steel)	DIN rail	
H	W	D	With grey cover	With transparent cover		Fixed horizontally	Fixed vertically
95	65	60	NLP090706	NLP090706T	-	-	-
110	110	65	NLP111107	NLP111107T	-	-	-
130	95	65	NLP131007	NLP131007T	-	-	-
130	130	75	NLP131308	NLP131308T	-	DR100	DR100
187	122	90	NLP191209	NLP191209T	MP1912	DR100	DR140
187	122	134	NLP191213	-	MP1912	DR100	DR140
201	163	98	NLP201610	NLP201610T	MP2016	DR140	DR180
201	163	142	NLP201614	-	MP2016	DR140	DR180
240	191	107	NLP241911	NLP241911T	MP2419	DR160	DR210
240	191	151	NLP241915	-	MP2419	DR160	DR210
289	239	107	NLP292411	NLP292411T	MP2924	DR215	DR265
289	239	151	NLP292415	-	MP2924	DR215	DR265
344	289	117	NLP342911	NLP342911T	MP3429	DR260	DR316
344	289	157	NLP342916	-	MP3429	DR260	DR316

Only the most popular sizes shown



For further options and information, please see our Price List Catalogue **Section 13**



Polycarbonate – Solid range **FIBOX**

- IP66/67 ingress protection / IK08 impact resistance
- Halogen free
- Grey base RAL 7035 with grey or transparent cover
- Total insulation
- Smooth sided base



Dimensions (mm)			Enclosure			Accessories below must be ordered separately			
						Mounting plate to suit*		External hinges	Wall mounting brackets*
H	W	D	Base depth	With grey cover	With transparent cover	Steel	Insulated		
190	190	130	100	PC191913G	PC191913T	EKHVT	EKHVTP	MB10622S	MB10674
280	190	180	100	PC281918G	PC281918T	EKJVT	EKJVTP		
280	280	180	100	PC282818G	PC282818T	EKOVT	EKOVTP		
380	280	180	100	PC382818G	PC382818T	EKPVT	EKPVTP		
560	380	180	100	PC563818G	PC563818T	EKUVT	EKUVTP		

Only the most popular sizes shown



For further options and information, please see our Price List Catalogue **Section 13**

Mild steel – STB range



- IP66 ingress protection / IK08 impact resistance
- 1.2mm mild steel folded and seam welded with holes for wall mounting
- Colour grey RAL 7035 powder coated
- Polyurethane gasket, stainless steel captive cover screws
- Earthing studs M8 x 12 in body and cover



Dimensions (mm)			Enclosure	Accessories below must be ordered separately			
H	W	D		Mounting plate to suit (steel)	DIN profiles to suit (steel)	External hinges	Wall mounting brackets
150	150	80	STB151508	BMP1515	BPP15	STBHO2	AW41
200	200	120	STB202012	BMP2020	BPP20		
200	300	120	STB203012	BMP2030	BPP20		
300	400	120	STB304012	BMP3040	BPP30		



For further information of the STB range please see our full brochure.

Stainless steel – SSTB range



- IP66 ingress protection / IK08 impact resistance
- Body 1mm; cover: 1.5mm; 316L grade stainless steel
- Silicone gasket with almost zero water absorption
- Folded and seam welded with four M6 x 13 studs for mounting plate
- M8 x 18mm earthing studs in body and cover



Dimensions (mm)			Enclosure	Accessories below must be ordered separately			
H	W	D		Mounting plate to suit (steel)	DIN profiles to suit (steel)	External hinges	Wall mounting brackets
150	150	80	SSTB151508316	BMP1515	BPP15	STBHO2	AW41
200	200	120	SSTB202012316	BMP2020	BPP20		
300	300	120	SSTB303012316	BMP3030	BPP30		



For further information of the SSTB range, please see our full brochure.

Only the most popular sizes shown

Wall mount enclosures

Wall mount enclosures provide secure and organised housing for electrical equipment, ensuring protection, accessibility and space efficiency in various applications.



ABS plastic - NLP wall mount range



- Galvanised steel mounting plate 1.5mm thick included
- IP65 ingress protection / IK08 impact resistance
- Halogen free
- Totally insulated
- Colour: grey RAL 7035 with grey hinged cover
- DIN 3mm lock



Dimensions (mm)			Weight (kg)	Standard enclosure	Mounting plate - included		Must be ordered separately	
H	W	D			H	W	Pre-cut DIN 35 mounting rail (Horizontal)	Wall mount brackets (qty 4)
300	200	180	1.88	NLP302018	270	170	EKIV17	FP12017
	300		2.69	NLP303018		270	EKIV27	
400			3.79	NLP403018	370			
500	400	200	4.96	NLP504020	470	370	EKIV37	
600		220	6.28	NLP604022	570			

Only the most popular sizes shown

Accessories



Pre-cut DIN 35 mounting rail



Wall mounting brackets
Part # FP12017

Glass fibre reinforced polycarbonate – ARCA range **FIBOX**

- IP66 ingress protection / IK10 impact resistance
- Excellent protection against vandalism
- Mounting pods on the base; cover and four base sides
- Variable depth option for internal mounting plates
- Unique double corner design with mounting holes outside ingress protection area
- Life expectancy over 25 years when installed outside



Dimensions (mm)			Enclosure catalogue no.	Accessories below must be ordered separately			
H	W	D		Mounting plate - steel *	Inner door	DIN module frame set	Rows x modules
300	200	150	ARCA302015	MPSARCA3020	IDSARCA3020	DRSARCA302015	1 x 5
400	300	210	ARCA403021	MPSARCA4030	IDSARCA4030	DRSARCA403021	2 x 10
500	400	210	ARCA504021	MPSARCA5040	IDSARCA5040	DRSARCA504021	3 x 16
600	400	210	ARCA604021	MPSARCA6040	IDSARCA6040	DRSARCA604021	3 x 16
700	500	300	ARCA705030	MPSARCA7050	IDSARCA7050	DRSARCA705030	4 x 21
800	600	300	ARCA806030	MPSARCA8060	IDSARCA8060	DRSARCA806030	4 x 27

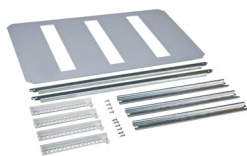
*For an insulated mounting plate, add a 'P' to the end of the steel part number.

Only the most popular sizes shown

Accessories



Mounting plate



DIN rail mount set



Inner door



Depth adjust kit

CBSARCA15 for 150mm deep
CBSARCA21 for 240mm deep
CBSARCA30 for 300mm deep



Wall mount brackets

WMKARCA10 up to 6040
WMKARCA10M sizes 7050 & 8060



For further options and information on the ARCA range, please see our full brochure.

Mild steel - NLINE range



- IP66 ingress protection / IK10 impact resistance
- RAL 7035 grey powder coating
- 2mm galvanised steel mounting plate and gland plate included
- Quarter turn double-bit 3mm insulated lock and key (black) with reversible door
- Earth studs on body and door



Dimensions (mm)			Weight (kg)	Standard enclosure	Mounting plate - included		Must be ordered separately
H	W	D			H	W	Wall mount brackets (qty 4)
200	200	155	3	NLS0202015	170	150	AW41
300	250	155	4.4	NLS0302515	270	200	
300	300	210	6.5	NLS0303021	270	250	
400	300	210	7.5	NLS0403021	370	250	
400	400	210	9.5	NLS0404021	370	350	
500	400	210	11.7	NLS0504021	470	350	
600	400	300	15.7	NLS0604030	570	350	
600	600	300	24	NLS0606030	570	510	
800	600	300	27	NLS0806030	770	550	

Only the most popular sizes shown



Mild steel – MAS/MAD range



- IP55 ingress protection / IK10 impact resistance
- RAL 7035 powder coated also available in X15 range
- Folded and seam welded
- Concealed hinges providing 130° opening and clean smooth lines
- One piece polyurethane seal
- 2mm galvanised steel mounting plate and gland plate included



MAS (single door) and MAD (double door) range

Dimensions (mm)			Weight (kg)	Standard enclosure with mounting plate and lock	Must be ordered separately	
H	W	D			Inner door	DIN module frame set
300	300	150	5.3	MAS0303015R5	-	-
400	300	210	7.5	MAS0403021R5	ADI04030R5	AC04030R5
400	400	210	9.5	MAS0404021R5	-	-
500	400	210	11.7	MAS0504021R5	ADI05040R5	AC05040R5
600	400	210	13.2	MAS0604021R5	ADI06040R5	AC06040R5
600	600	300	24	MAS0606030R5	ADI06060R5	AC06060R5
800	600	210	27	MAS0806021R5	ADI08060R5	AC08060R5
800	1200	300	60	MAD0801230R5	-	-
1200	1200	300	86	MAD1201230R5	-	-
1400	1000	300	84	MAD1401030R5	-	-

Only the most popular sizes shown

Accessories



Mounting plate (steel)



Modular chassis



Rain hood



Inner door



Wall mounting brackets Part # AW41



Key and lock combinations



Depth adjustment kit



Gland plates



Plinths



For further options and information on MAS/MAD range, please see our full brochure.

Stainless steel – ASR/ADR/SRE range



- IP66 (single door), IP55 (double door) ingress protection / IK10 impact resistance
- 316L stainless steel body and door with 130° opening
- Silicone gasket provides improved chemical resistance
- Mounting plate marked at 10mm intervals for easy horizontal positioning is included.



ASR/ADR range (flat top with 20mm overhang)

Enclosure dimensions (mm)			Weight (kg)	Standard enclosure with mounting plate and lock	Accessories below must be ordered separately		
H	W	D			Wall mount brackets to suit (stainless steel)	Inner door to suit (mild steel)	Rain hoods to suit (stainless steel)
300	200	150	12.8	ASR0302015316	AWS41316	-	-
400	400	210	23.7	ASR0404021316		ADI04040R5	ASST042316
600	400	210	12.8	ASR0604021316		ADI06040R5	ASST042316
800	600	210	23.7	ASR0806021316		ADI08060R5	ASST062316
1000	800	300	12.8	ASR1008030316		ADI10080R5	ASST083316
1400	800	300	23.7	ASR1408040316		-	ASST084316

Only the most popular sizes shown



For further options and information on the ASR/ADR range, please see our full brochure.

38° sloped roof enclosure range

Enclosure dimensions (mm)			Weight (kg)	Standard enclosure	Mounting plate - included		Must be ordered separately
H	W	D			H	W	Inner door to suit (mild steel)
300	200	150	5	SRE0302015316	270	150	-
400	300	210	8	SRE0403021316	370	250	ADI04030R5
600	400	260	16	SRE0604026316	570	350	ADI06040R5
800	600	300	31	SRE0806030316	770	550	ADI08060R5

Only the most popular sizes shown

Stainless steel - nVent HOFFMAN ASR/ADR/SRE range

Rain hood
(ASR/ADR only)

Inner door

Wall mounting brackets
(ASR/ADR only)Key and lock
combinations

Ventilation grilles



For further options and information of the SRE range, please see our full brochure.

Floor standing enclosures

Floor standing enclosures are versatile and practical solutions for housing and protecting electrical equipment in various applications. These enclosures are designed to stand freely on the floor, providing a stable and secure housing for sensitive components such as switchgear, control panels and automation systems. Floor standing enclosures are available in mild steel, aluminium and stainless steel, offering durability and resistance to environmental factors.



Mild steel – standalone MKS/ MKD range



- IP55 (single/double door) ingress protection
- RAL 7035 powder coated
- Four times folded and seam welded frame
- Removable roof panels
- Four point locking system with 3mm DIN lock
- Fully formed
- Adjustable mounting plate
- Large range of accessories
- Plinths available in 100mm and 200mm heights



Dimensions (mm)			Standard enclosure	Must be ordered separately		
H	W	D		Plinth front and rear panels to suit (100mm high) *	Plinth side panels to suit (100mm high) *	Inner door with 2 locks & handles
1600	600	400	MKS16064R5	PF1060	PS1040	DI1606R5
	800		MKS16084R5	PF1080		-
	1000		MKS16104R5	PF1100		-
	1200		MKD16124R5	PF1120		-
1800	600	400	MKS18064R5	PF1060	PS1040	DI1806R5
	800		MKS18084R5	PF1080		DI1808R5
	1000		MKS18104R5	PF1100		DI1810R5
	1200		MKD18124R5	PF1120		-
	1600		MKD18164R5	PF1080 (X2)		-
2000	800	400	MKS20084R5	PF1080	PS1040	DI2008R5
	1000		MKS20104R5	PF1100		DI2010R5
	1200		MKD20124R5	PF1120		-
	1600		MKD20164R5	PF1080 (X2)		-

*Set of two.

Only the most popular sizes shown



For further options and information on the MKS/MKD range, please see our full brochure.

Mild steel – bayable MCS/MCD range



- RAL 7035 powder coated
- Seam welded reversed open profiles
- Doors can be mounted for left or right openings
- Removable roof panels
- Four point locking system with 3mm DIN lock
- Adjustable mounting plate
- Side panels sold separately
- Modular design
- Ideal when baying or combining cabinets



Dimensions (mm)			Standard enclosure	Must be ordered separately			
H	W	D		Side panels *	Plinth front and rear panels to suit (100mm high) *	Plinth side panels to suit (100mm high) *	Inner door with 2 locks & handles
1800	600	400	MCS18064R5	SPM1804R5	PF1060	PS1040	DI1806R5
	800		MCS18084R5		PF1080		DI1808R5
2000	600	400	MCS20064R5	SPM2004R5	PF1060	PS1040	DI2006R5
	800		MCS20084R5		PF1080		DI2008R5
	1200		MCD20124R5		PF1120		-
1800	600	500	MCS18065R5	SPM1805R5	PF1060	PS1050	DI1806R5
	800		MCS18085R5		PF1080		DI1808R5
	1000		MCS18105R5		PF1100		DI1810R5
	1200		MCD18125R5		PF1120		-
2000	800	500	MCS20085R5	SPM2005R5	PF1080	PS1050	DI2008R5
	800		MCD20085R5		PF1080		-
	1200		MCD20125R5		PF1120		-
2000	800	600	MCS20086R5	SPM2006R5	PF1080	PS1060	DI2008R5
	1200		MCD20126R5		PF1120		-

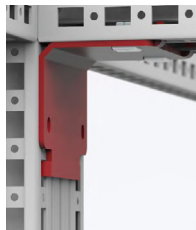
*Set of two.

Only the most popular sizes shown

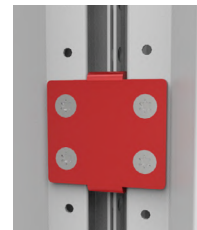
Accessories



CCI6 - Internal snapline baying bracket (set of 6)



CCM04 - Internal corner snapline baying bracket (set of 4)



CCE06 - External baying bracket (set of 6)



For further options and information on the MCS/MCD range, please see our full brochure.



Floor standing CCM-CCI mounting instructions.

Stainless steel– standalone EKSS/EKDS range



- IP66 ingress protection (single door models and double door models with centre mullion)
- IP55 ingress protection (standard double door models without centre mullion)
- IK10 impact resistance
- AISI 316L pre-grained stainless steel
- One piece body with integrated depth profiles
- Removable rear panels and adjustable mounting plate
- Four point locking system with chrome plated 3mm DIN lock
- Plinths available in 100mm and 200mm heights



Models below are IP66 with a single door.

Dimensions (mm)			Weight (kg)	Standard enclosure	Accessories below must be ordered separately	
H	W	D			Plinth front and rear panels to suit (100mm high 316L stainless steel)*	Plinth side panels to suit (100mm high 316L stainless steel)*
1800	600	400	90	EKSS18064316	PFS1060316	PSS1040316
	800		117	EKSS18084316	PFS1080316	
	1000		138	EKSS18104316	PFS1100316	

Models below are IP66 and are supplied with a centre mullion.

1800	1200	400	151.9	EKDS181244X316	PFS1120316	PSS1040316
	1600		198	EKDS181644X316	PFS1080316 (X2)	
2000	1200		166.8	EKDS201244X316	PFS1120316	
	1600		216.4	EKDS201644X316	PFS1080316 (X2)	

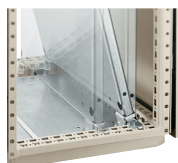
*Set of two.

Only the most popular sizes shown

Accessories



Glazed and inner door



Mounting plates and adjustment brackets



Plinths



Rain hood



Swing handles and inserts



Enclosure lights



For further options and information on the EKSS/EKDS range, please see our full brochure.

Stainless steel – bayable MCSS/MCDS range*



- IP55 (single/double door) ingress protection / IK10 impact resistance
- Seam welded reversed open profiles with integrated depth profiles
- AISI 316L pre-grained stainless steel
- Doors can be mounted for left or right openings
- Removable roof panels and adjustable mounting plate
- Four point locking system with chrome plated 3mm DIN lock
- Side panels sold separately



* This range has limited stock. Please contact NHP for leadtimes.

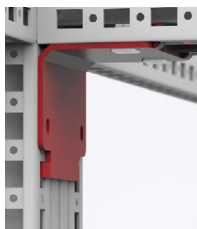
Dimensions (mm)			Weight (kg)	Enclosure	Must be ordered separately		
H	W	D			Side panels to suit (set of two, 316L stainless steel) *	Plinth front and rear panels to suit (100mm high, 316L stainless steel) *	Plinth side panels to suit (100mm high, 316L stainless steel) *
1800	800	500	117	MCSS18085316	SPMS1805316	PFS1080316	PSS1050316
	1200		178	MCDS18125316	SPMS1805316	PFS1120316	
2000	800	600	131	MCSS20086316	SPMS2006316	PFS1080316	
	1200		196	MCDS20125316	SPMS2006316	PFS1120316	

Only the most popular sizes shown

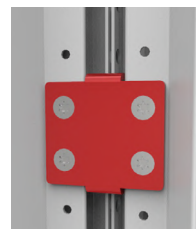
Accessories



CCI6 - Internal snapline baying bracket (set of 6)



CCM04 - Internal corner snapline baying bracket (set of 4)



CCE06 - External baying bracket (set of 6)



For further options and information on the MCSS/MCDS range, please see our full brochure.



Floor standing CCM-CCI mounting instructions.



Comparison of enclosure material

The performance and limitations of an enclosure are dependent on the material it is made of. This section gives an indication of benefits and drawbacks of the various materials on offer.

Acrylonitrile butadiene styrene

Benefits

- Easy machining with normal tools
- Easy colouring through pigmentation
- Light weight
- Good resistance to chemical attack
- Excellent insulating properties
- RF transparent, ideal for telemetry applications

Drawbacks

- Slightly lower impact resistance and operating temperature range compared with polycarbonate
- Slightly lower UV resistance compared with polycarbonate
- No EMC shielding



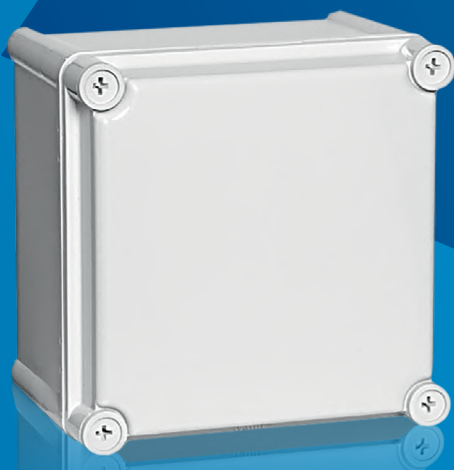
Polycarbonate

Benefits

- High impact resistance
- Easy machining with normal tools
- High IP rating
- Wide operating temperature range
- Self-extinguishing
- Good resistance to chemical attack
- RF transparent, ideal for elementary applications
- Light weight
- Good UV resistance
- Excellent insulating properties
- Cost-effective material for harsh environments
- High weather resistance

Drawbacks

- No EMC shielding



Glass fibre reinforced polycarbonate

Benefits

- IP66 high IP rating
- Very high impact resistance - able to withstand impact up to IK10
- Excellent protection against vandalism
- Easy to machine with standard tools
- RF transparent, ideal for elementary applications
- Self-extinguishing
- Light weight
- High UV and weather resistance
- Wide operating temperature range

Drawbacks

- No EMC shielding



Mild steel

Benefits

- Good resistance to chemical attack (powder coated RAL 7035)
- High impact resistance
- Wide operating temperature range
- Easy earthing
- MC shielding
- Rigid construction

Drawbacks

- More expensive than polycarbonate
- Heavier than Polycarbonate and Acrylonitrile butadiene styrene
- Prone to corrosion
- Machining with special tools only



316L stainless steel (SS)

Benefits

- Good resistance to chemical attack and corrosion
- High impact resistance
- Wide operating temperature range
- Easy earthing
- High weather resistance
- Hygienic and attractive appearance
- EMC shielding
- Good heat sink properties
- Rigid construction



Drawbacks

- More expensive than polycarbonate and mild steel
- Heavier than Polycarbonate and Acrylonitrile butadiene styrene
- Difficult to fabricate
- Machining with special tools only

Material performance overview

The following table gives a comparative view, showing the chemical resistance of the various enclosure materials.

	Acrylonitrile butadiene styrene	Polycarbonate	Glass fibre reinforced polycarbonate	Powder coated	316L grade stainless steel
Outdoor use	●	● ● ● ●	● ● ● ● ●	● ● ●	● ● ● ● ●
Indoor use	● ● ● ● ●	● ● ● ● ●	● ● ● ● ●	● ● ● ● ●	● ● ● ● ●
Cost	● ● ● ● ●	● ● ●	● ● ● ●	● ● ●	●
Light weight	● ● ● ● ●	● ● ● ● ●	● ● ● ● ●	●	●
High rigidity	●	● ● ●	● ● ● ● ●	● ● ● ● ●	● ● ● ● ●
Impact resistance	● ●	● ● ● ●	● ● ● ● ●	● ● ● ● ●	● ● ● ● ●
Salt water environments	● ●	● ● ● ● ●	● ● ● ● ●	● ●	● ● ● ● ●
Neutral salts	● ●	● ● ● ● ●	● ● ● ● ●	● ●	● ● ● ● ●
Acids, low concentrations	● ● ● ●	● ● ● ● ●	● ● ● ● ●	● ● ●	● ● ● ● ●
Acids, high concentrations	●	● ● ●	● ● ●	●	● ● ●
Alkalis, low concentrations	● ● ● ● ●	● ● ●	● ● ● ● ●	● ● ● ● ●	● ● ● ● ●
Alkalis, high concentrations	● ● ● ●	●	●	● ● ● ●	● ● ● ●
Petroleum	●	● ● ●	● ● ● ● ●	● ● ● ● ●	● ● ● ● ●
Hydraulic oil	● ● ● ● ●	● ● ● ● ●	● ● ● ● ●	● ● ● ●	● ● ● ● ●
Alcohols	● ● ●	● ● ● ●	● ● ● ● ●	● ● ● ● ●	● ● ● ● ●
Solvents	●	●	● ● ● ● ●	● ● ● ●	● ● ● ● ●
Cooling fluids	● ● ● ● ●	● ● ●	● ● ● ●	● ● ●	● ● ● ● ●

● = Poor
● ● ● ● ● = Excellent

Data subject to change without notice.

This table is only to be used as a guide. Environmental conditions must be considered when selecting your enclosure material. Detailed chemical resistance data is available on request.

Industrial enclosure customisation

NHP can also customise industrial enclosures to suit your specification.

Through our state of the art computer numerical control machining system, we can perform milling as well as engraving and cutting to any specification in three dimensions to the highest precision, ensuring your demands are met.

- Cost effective customisation for specific applications
- Quick turnaround with high repeatability including threaded and unthreaded holes, cable entries, cut-outs on any side of the enclosure
- Industrial enclosure materials
 - Acrylonitrile butadiene styrene
 - Polycarbonate
 - Glass reinforced polycarbonate
 - Polyester
 - Aluminium
- In-house CNC machinery setup in Melbourne

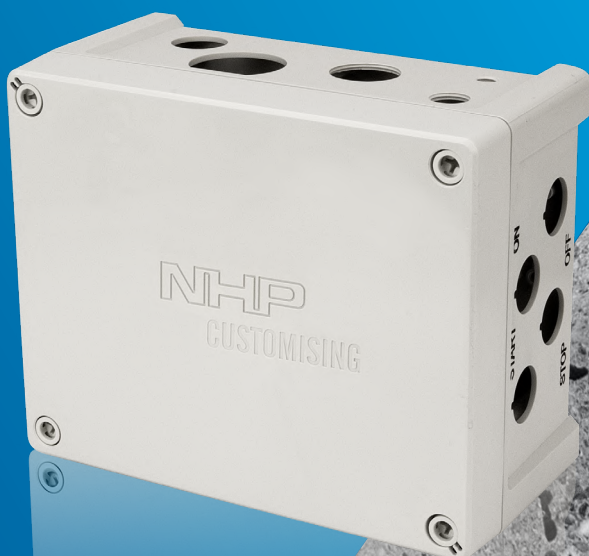
Whether the specifications and quantities are large or small, NHP's focus is on providing a tailored solution with prompt delivery to all locations across Australia and New Zealand.

Why NHP?

While our customers' challenges may be complex, their ultimate goal is simple - run a profitable, safe and sustainable operation.

NHP is committed to servicing the needs of our customers. With 55 years of experience in the electrical and engineering industry, our specialist teams work collaboratively to design and deliver solutions to maximise the success of your project.

We bring together internationally recognised automation, motor control and power distribution products with local knowledge and expertise to deliver best practice services from concept design through to installation and after-sales service, including project management.





24/7/365
emergency service



Extensive local
stockholding



Service network throughout
Australia and New Zealand



Extensively trained and
qualified service technicians



NHP project
management



Customised
manufactured solutions



Scan the QR code to view the
CNC milling solution in action.

Notes

Notes



nhp.com.au
SALES 1300 NHP NHP
sales@nhp.com.au

nhpnz.co.nz
SALES 0800 NHP NHP
sales@nhp-nz.com

NHP ELECTRICAL ENGINEERING PRODUCTS

A.B.N. 84 004 304 812
© COPYRIGHT NHP 2023
NHP16BCH 01/24