

MPFB4540FSJ72BA

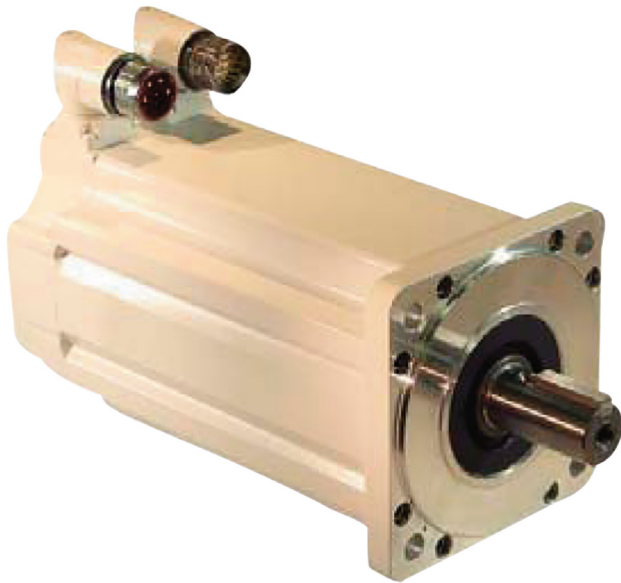
Allen-Bradley Kinetix MPF Servo Motor 460VAC 3000 RPM
10.2Nm Single Turn Encoder No Brake Keyed



Allen-Bradley

by ROCKWELL AUTOMATION

SERVO MOTORS AND CABLES



Component type	Electric servomotor
Range	MP
Model	N/A
Product status	Existing

The Allen-Bradley MP-Series™ Low Inertia (MPL) Servo Motors are a compact, brushless high torque motor ideal for the most demanding complex motion systems. Available in nine frame sizes to suit any application.

ELECTRICAL	Voltage class AC	400.0 V
COMMUNICATION	Feedback type	Single-turn high resolution
	Feedback resolution	Sin/Cos, 1024 cycles/rev
	Feedback protocol	HiperFace DSL Protocol/SSI Protocol
CONSTRUCTION	With brake	No
	Magnet stack (length)	101.6 mm
	Magnet stack (number of magnets)	40
	Degree of protection (IP)	IP66/IP67/IP69K
MECHANICAL	Rotational speed	3000.0 1/min
	Nominal torque	27.1 Nm
	Torque	10.2 Nm
	Shock acceleration (Max)	20.0 g
	Vibration frequency, operational (Max)	2000.0 Hz
	Vibration acceleration (Max)	2.5 m/s ²
DIMENSIONS	Weight	8.7 g
ENVIRONMENT	Operating temperature	0 - 40 °C
	Allowable relative humidity	5 - 95 %
	Ambient temperature	-30 - 70 °C

MPFB4540FSJ72BA

Allen-Bradley Kinetix MPF Servo Motor 460VAC 3000 RPM
10.2Nm Single Turn Encoder No Brake Keyed



Allen-Bradley

by ROCKWELL AUTOMATION

SERVO MOTORS AND CABLES

DIMENSIONAL DIAGRAM

