

MPFB430PMJ74BA

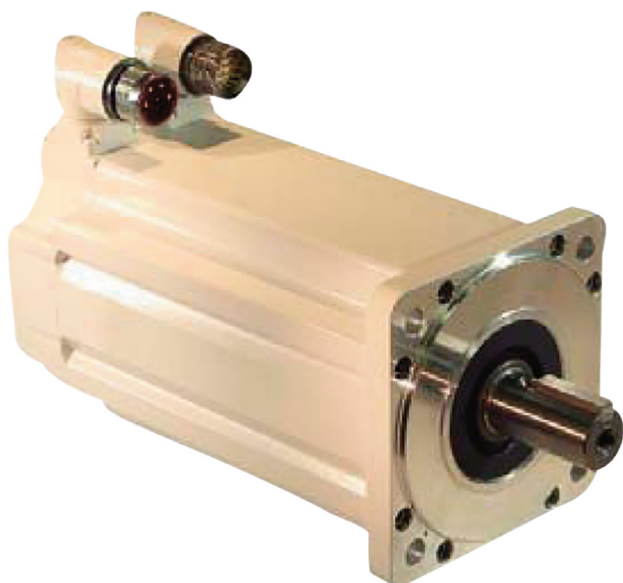
Allen-Bradley Kinetix MPF Servo Motor 460VAC 5000 RPM
6.55Nm Multi Turn Encoder 24VDC Brake Keyed



Allen-Bradley

by ROCKWELL AUTOMATION

SERVO MOTORS AND CABLES



Component type	Electric servomotor
Range	MP
Model	N/A
Product status	Existing

The Allen-Bradley MP-Series™ Low Inertia (MPL) Servo Motors are a compact, brushless high torque motor ideal for the most demanding complex motion systems. Available in nine frame sizes to suit any application.

ELECTRICAL	Voltage class AC	400.0 V
COMMUNICATION	Feedback type	Multi-turn high resolution encoder
	Feedback resolution	Sin/Cos, 1024 cycles/rev
	Feedback protocol	HiperFace DSL Protocol/SSI Protocol
CONSTRUCTION	With brake	Yes
	Magnet stack (length)	76.2 mm
	Magnet stack (number of magnets)	30
	Degree of protection (IP)	IP66/IP67/IP69K
MECHANICAL	Rotational speed	5000.0 1/min
	Nominal torque	19.8 Nm
	Torque	6.55 Nm
	Shock acceleration (Max)	20.0 g
	Vibration frequency, operational (Max)	2000.0 Hz
DIMENSIONS	Vibration acceleration (Max)	2.5 m/s ²
	Weight	7.4 g
ENVIRONMENT	Operating temperature	0 - 40 °C
	Allowable relative humidity	5 - 95 %
	Ambient temperature	-30 - 70 °C

MPFB430PMJ74BA

Allen-Bradley Kinetix MPF Servo Motor 460VAC 5000 RPM
6.55Nm Multi Turn Encoder 24VDC Brake Keyed



Allen-Bradley

by ROCKWELL AUTOMATION

SERVO MOTORS AND CABLES

DIMENSIONAL DIAGRAM

