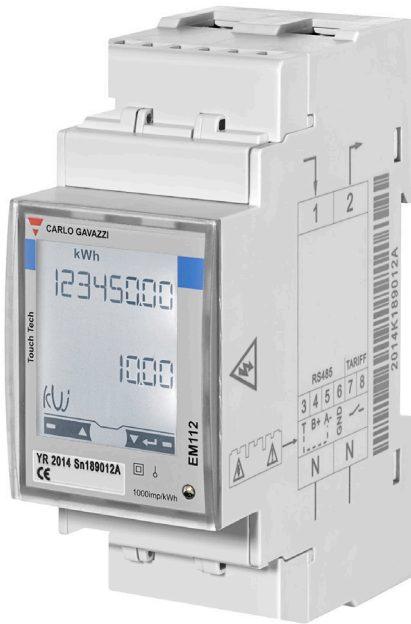


EM112DINAV01XS1X

Carlo Gavazzi EM11 EM112 Direct Connect Meter 100A 2 Din plus RS485



SINGLE PHASE ENERGY METERS



Component type	Multifunction measuring instrument
Range	EM111
Model	N/A
Product status	Existing

NHP's range of DIN mountable single-phase direct connect meters includes economical solutions for monitoring your energy consumption. The Carlo Gavazzi EM11 energy meter range offers options, from a basic kWh counter to a compact, comms-enabled basic power analyser.

ELECTRICAL

Voltmeter	Yes
Ampere meter	Yes
Pulse counter	No
Frequency meter	Yes
Effective power measurement device	Yes
Voltage type of supply voltage	AC
Blind power meter	Yes

COMMUNICATION

Supporting protocol for other bus systems	No
Supporting protocol for Modbus	Yes

CONSTRUCTION

Mounting method	DIN rail
Degree of protection (IP), front side	IP51

MECHANICAL

Display	LCD
Connection system	Screwed terminal
With rotational speed meter	No

DIMENSIONS

Depth	63.0 mm
Width	35.0 mm
Height	90.0 mm

ENVIRONMENT

Operating temperature	-25 - 65
Storage temperature	-30 - 80 °C