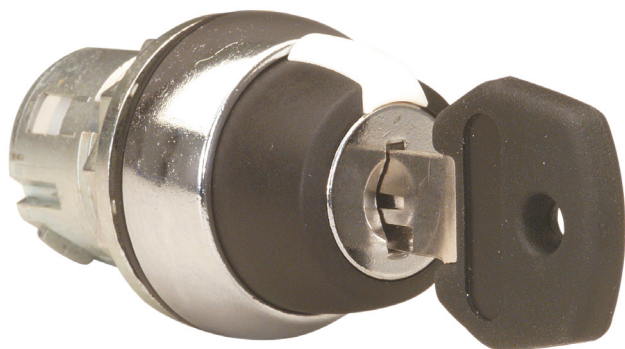


D7MKB3402R

Sprecher and Schuh D7 Key Selector Switch 22.5 mm 3 Position
Metal Spring Rtn Center Code 3802



Component type	Front element for selector switch
Range	D7
Model	N/A
Product status	Existing

The Sprecher+Schuh D7 line of operator control devices are a diverse range of 22.5mm mount pushbuttons, pilot lights, selector switches, emergency stops, ideal for use in applications requiring reliable performance. A modular design allows for easy configuration and assembly. Available in plastic and metal types, optional accessories include enclosures, legend plates, padlocks and colour caps.

ELECTRICAL	Type of control element	Key
	Colour control element	Black
	Colour indicator light cap	White
	Material front ring	Metal
CONSTRUCTION	Colour front ring	Other
	Degree of protection (IP), front side	IP66
	With front ring	Yes
	Degree of protection (NEMA)	Other
MECHANICAL	Number of switch positions	3.0
	Switching function latching	No
	Spring-return	Yes
	Vibration acceleration (Max)	10.0 m/s ²
	Vibration frequency, operational (Max)	2000.0 Hz
	Shock acceleration (Max)	100.0 g
PHOTOMETRIC	Mechanical life (service cycles)	300000.0 cycles
	Suitable for illumination	No
DIMENSIONS	Hole diameter	22.5 mm
	Width opening	29.6 mm
	Height opening	47.1 mm
ENVIRONMENT	Operating temperature	-25 - 70 °C

D7MKB3402R

Sprecher and Schuh D7 Key Selector Switch 22.5 mm 3 Position
Metal Spring Rtn Center Code 3802



sprecher+schuh
PUSHBUTTON AND PILOT LIGHTS

DIMENSIONAL DIAGRAM

