

855BMS24BR5

Allen-Bradley 855BM Beacon Strobe Surface Mount 24V AC DC
Amber



Allen-Bradley

by ROCKWELL AUTOMATION

BEACONS



Component type	Rotating beacon alarm luminaire
----------------	---------------------------------

Range	Beacons
-------	---------

Model	N/A
-------	-----

Product status	Existing
----------------	----------

The Allen-Bradley 855R series of round beacons are ideal for use in industrial signalling applications. Designed for fast, flexible, and easy installation with simple modular assembly while maintaining reliable performance. Available in 110mm diameter size utilising the latest LED technology with various colour, voltage and mounting options.

ELECTRICAL

Nominal voltage	24.0 V
Electricity consumption	1.3 A
Type of current	AC/DC
Function	Strobe

CONSTRUCTION

Colour of lamp hood	Amber
Degree of protection (IP)	IP65
Optics	Fresnel lens
Mounting method	Surface mounting

PHOTOMETRIC

Lamp type	Other
-----------	-------

855BMS24BR5

Allen-Bradley 855BM Beacon Strobe Surface Mount 24V AC DC
Amber



Allen-Bradley

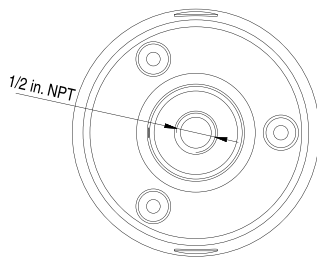
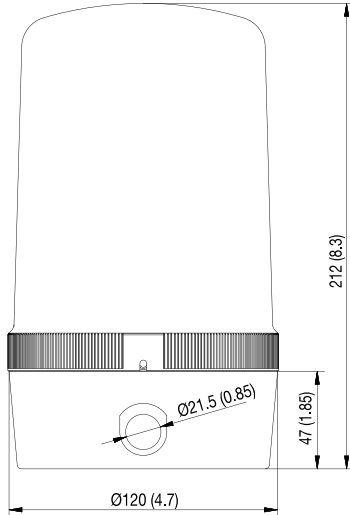
by ROCKWELL AUTOMATION

BEACONS

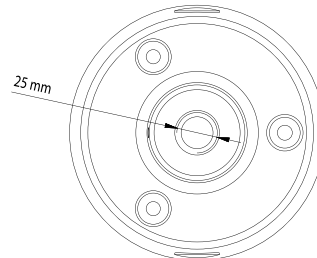
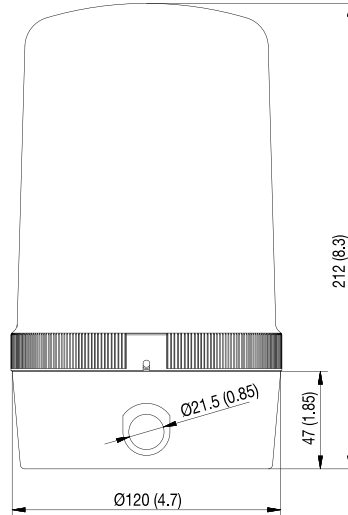
DIMENSIONAL DIAGRAM

Dimensions in millimeters (inches). Dimensions are not intended to be used for manufacturing purposes.

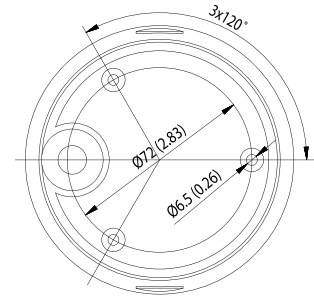
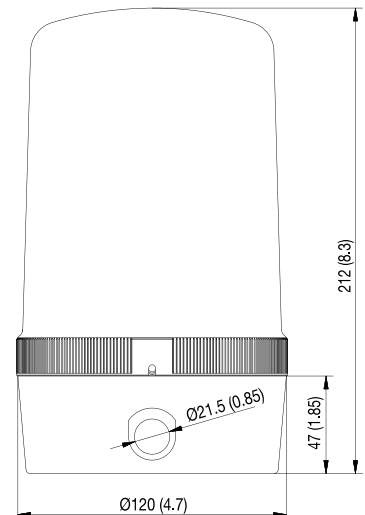
120 mm Beacon NPT Conduit Mount



120 mm Beacon Tube Mount



120 mm Beacon Surface Mount



120 mm Beacon Vertical Bracket

