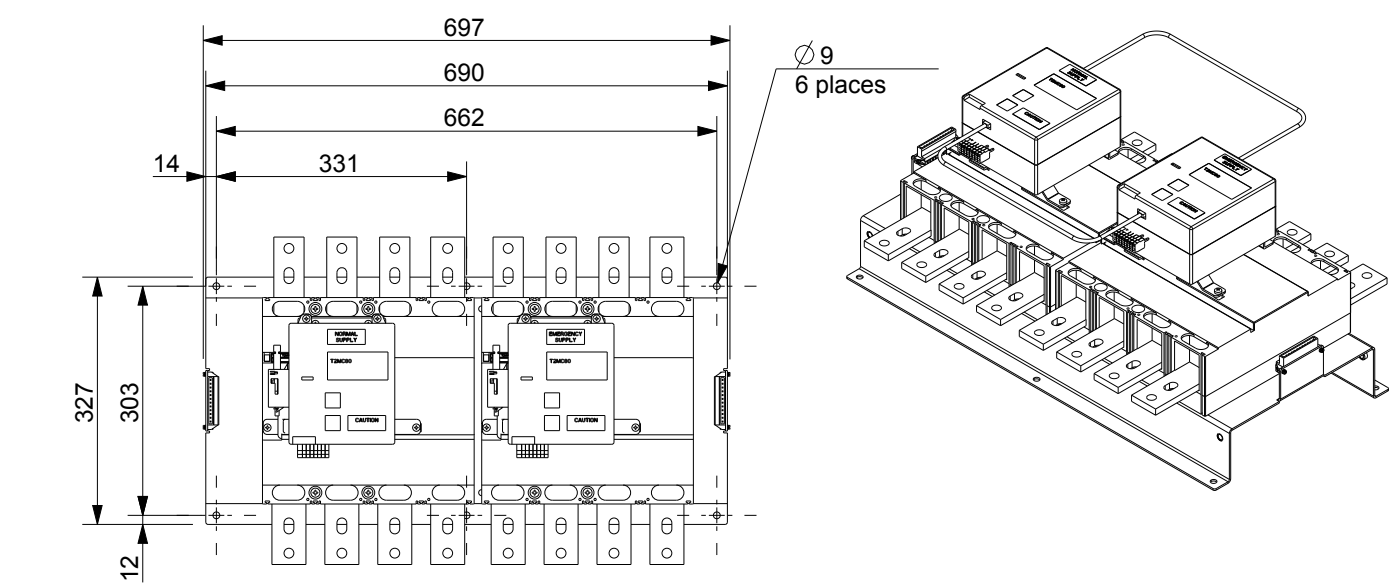


MOUNTING PAN DETAILS

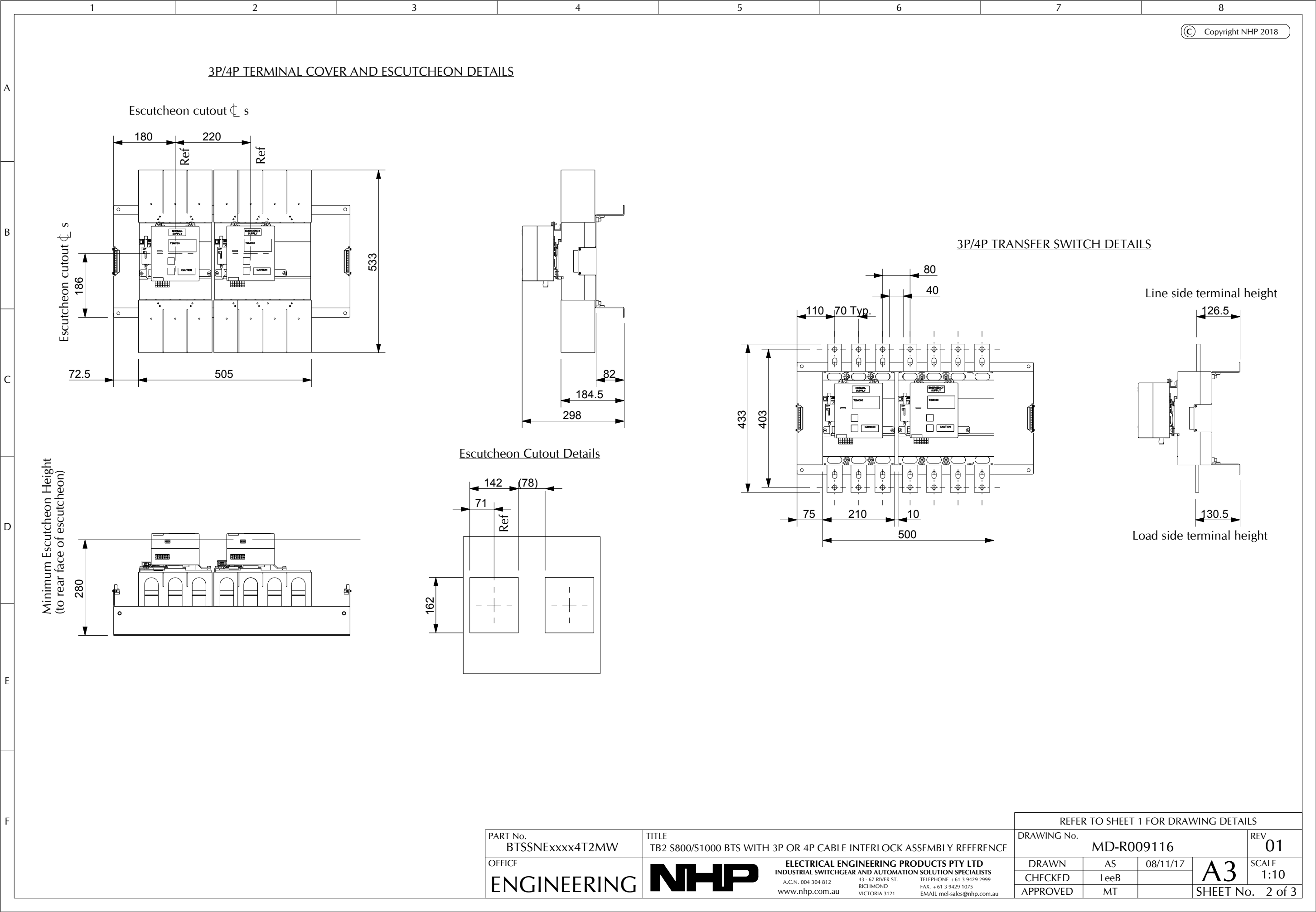
4P/4P TRANSFER SWITCH DETAILS



ASSEMBLY P/NO	MCCB P/NO
BTSSNE63034T2MW	S800NE3630 & S800NE4630
BTSSNE80034T2MW	S800NE3800 & S800NE4800
BTSSNE100034T2MW	S1000NE31000 & S800NE41000
BTSSNE63043T2MW	S800NE4630 & S800NE3630
BTSSNE80043T2MW	S800NE4800 & S800NE3800
BTSSNE100043T2MW	S1000NE41000 & S800NE31000
BTSSNE63044T2MW	S800NE4630 & S800NE4630
BTSSNE80044T2MW	S800NE4800 & S800NE4800
BTSSNE100044T2MW	S1000NE41000 & S800NE41000

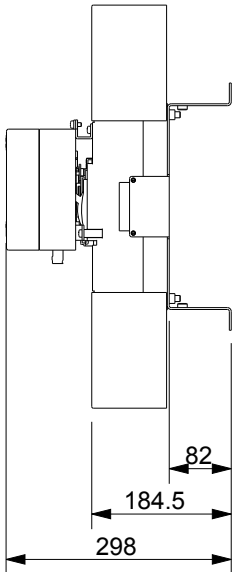
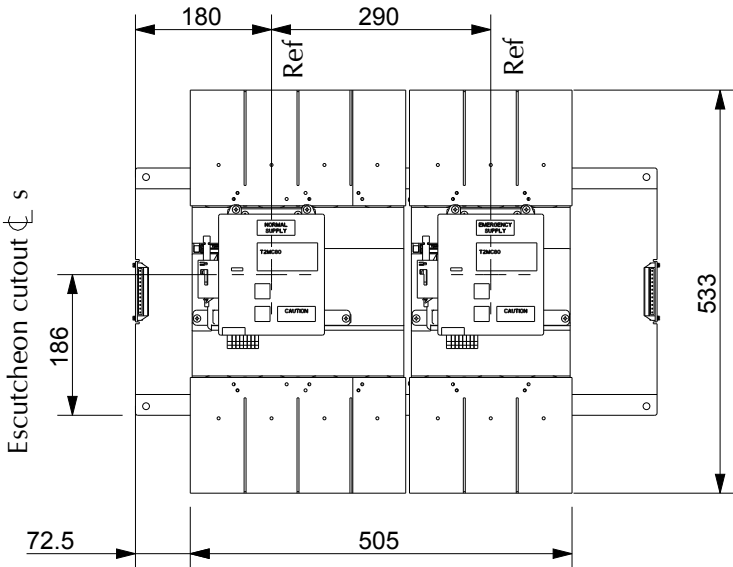
OPTIONS	
NHP P/No	DESCRIPTION
T2CF803SLNG	T2 TERMINAL COVER FOR 1000A 3P (QTY 2)
T2CF804SLNG	T2 TERMINAL COVER FOR 1000A 4P (QTY 2)

REFERENCE DOCUMENTS		TOLERANCES UNLESS SPECIFIED OTHERWISE			METRIC 3RD ANGLE PROJECTION	MATERIAL		6						
REFERENCE	DESCRIPTION	OVER	TO	TOL	PRODUCT GROUP	FINISH	5							
		0	3	±0.1	POWER DISTRIBUTION		4							
		3	20	±0.2	PROJECT		3							
		20	80	±0.3	TB2 MTS-BTS		2							
		80	180	±0.4	PART No.		1	Table of part numbers added	6 Sep 18	LeeB			MT	
		180	250	±0.5	BTSSNExxxx4T2MW	No.	REVISION			DATE	DRAWN	CHECKED	APPROVED	
3D CAD FILE		> 250		±0.8	OFFICE	TITLE					DRAWING No.			REV
BTSSNEXXXX4T2MW_R.asm		ANGULAR		±0.2°	ENGINEERING	TB2 S800/S1000 BTS WITH 3P OR 4P CABLE INTERLOCK ASSEMBLY REFERENCE					MD-R009116			01
		HOLE SIZES		+ 0.15-0		ELECTRICAL ENGINEERING PRODUCTS PTY LTD INDUSTRIAL SWITCHGEAR AND AUTOMATION SOLUTION SPECIALISTS A.C.N. 004 304 812 www.nhp.com.au					DRAWN	AS	08/11/17	A3
					43 - 67 RIVER ST. RICHMOND VICTORIA 3121					CHECKED	LeeB		SHEET No.	
					TELEPHONE + 61 3 9429 2999 FAX: + 61 3 9429 1075 EMAIL mel-sales@nhp.com.au					APPROVED	MT			

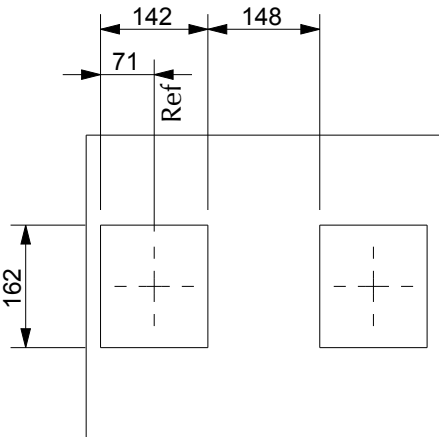


4P/3P TERMINAL COVER AND ESCUTCHEON DETAILS

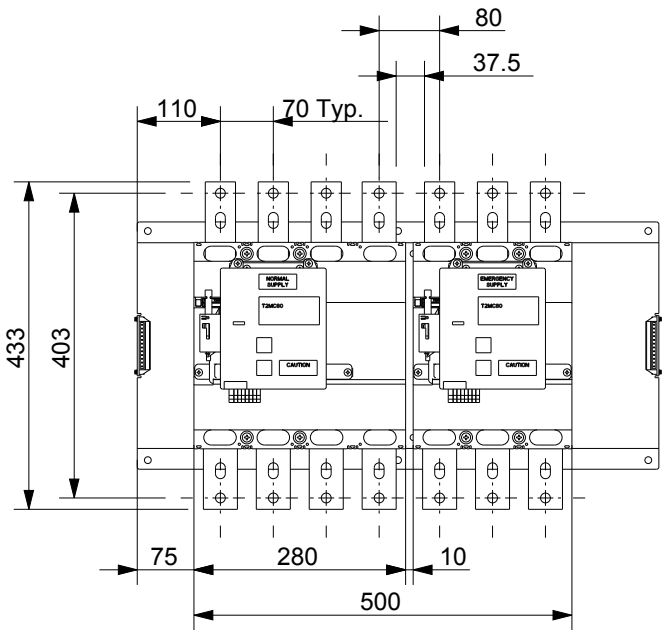
Escutcheon cutout ϕ s



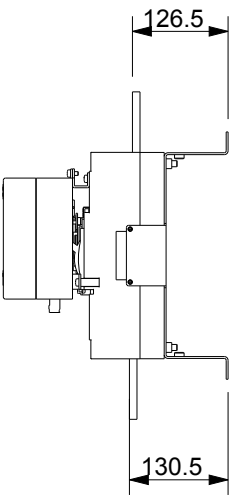
Escutcheon Cutout Details



4P/3P TRANSFER SWITCH DETAILS

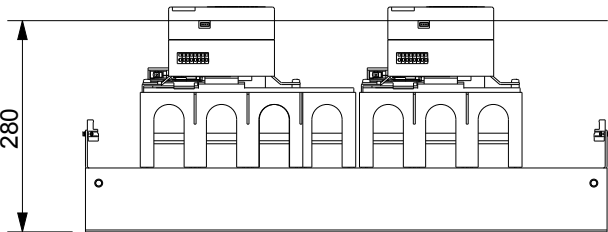


Line side terminal height



Load side terminal height

Minimum Escutcheon Height
(to rear face of escutcheon)



PART No.
BTSSNExxxx4T2MW
OFFICE
ENGINEERING

TITLE
TB2 S800/S1000 BTS WITH 3P OR 4P CABLE INTERLOCK ASSEMBLY REFERENCE
NHP
ELECTRICAL ENGINEERING PRODUCTS PTY LTD
INDUSTRIAL SWITCHGEAR AND AUTOMATION SOLUTION SPECIALISTS
A.C.N. 004 304 812
43 - 67 RIVER ST.
RICHMOND
VICTORIA 3121
www.nhp.com.au
TELEPHONE + 61 3 9429 2999
FAX + 61 3 9429 1075
EMAIL mel-sales@nhp.com.au

REFER TO SHEET 1 FOR DRAWING DETAILS				
DRAWING No.			REV	
MD-R009116			01	
DRAWN	AS	08/11/17	A3	SCALE
CHECKED	LeeB			1:10
APPROVED	MT			
			SHEET No. 3 of 3	