

POWER CONTINUITY SOLUTIONS

Enclosed ATS with Maintenance Bypass function

ATSE* - Automatic Transfer Switch Equipment from 40 to 3200 A

NHP



Function

- Provides automatic transfer of two supply sources to ensure continuity of supply to critical loads such as sprinklers, elevators, water pumps...
- Guaranteed continuity of the power supply during maintenance and test operations.
- Complete isolation of the Automatic Transfer Switch ensuring maintenance safety.

The association of an ATyS along with a remote interface ATyS D20, will enable an easy configuration, exploitation and visualisation of the data shown on the front of the equipment (timers settings, hysteresis, start/stop of the genset...).

General characteristics

- From 40 to 3200 A - 4 poles.**
- 230/400 VAC +/- 20%, 50/60 Hz, self-supplied from incoming sources.
- Normal/Emergency logic control sequence.
- Voltage and frequency checking of networks I and II.
- Control of phase rotation.
- 1 configurable output relay for generator start/stop command.
- Position I, 0, II control by external dry contact.
- Manual emergency operation.
- Auxiliary contacts.
- MODBUS communication options available
- AUTO / MANU selector.
- Equipment protection degree: IP41 as standard - Other IP upon request.
- Hinged door.
- Wall mounting brackets supplied up to 160A
- Floor standing feet from 250A to 3200 A.
- Plug-in ATS from 160 A.
- Phase identification.
- Mimic panel (3 LEDs; source availability (1 and 2) and load; 16 LED mimic panel optional).
- Integral protection against direct contact on each functional unit.
- Steel enclosure
- Colour: RAL 7035.

ATSE: Automatic Transfer Switch Equipment

The solution for

- > Data centres
- > Power production
- > Healthcare buildings
- > High-rise buildings
- > Banking and Insurance
- > Transportation

Key points for user

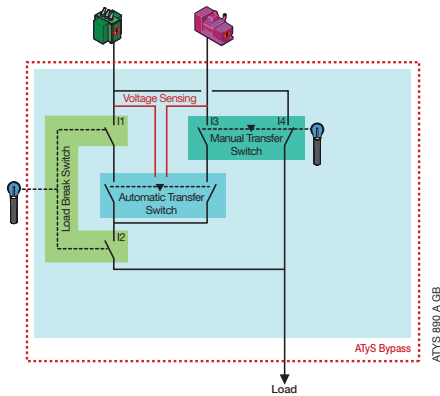
- > Maintains the comfort and safety of people within the building and allows critical processes to continue by quickly restoring power during a mains failure.
- > No-break by-pass function allows uninterrupted power availability during maintenance of the switching mechanism – removing the 'single point of failure' that normally exists in typical ATS systems
- > Optimised for cost Vs reliability – can avoid a costly total redundancy design.

- > IEC 61439-2
- > IEC 60947-6-1
- > IEC 60947-3
- > BS 60947-6-1

2 versions

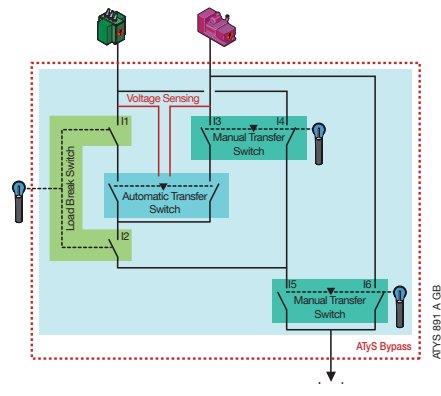
Single Line ATS Bypass

- It consists of 2 functions: an automatic changeover switch and a single Bypass line connected to the preferred supply source.



Double Line ATS Bypass

- It consists of 3 functions: an automatic changeover switch, an ATS Bypass and a facility for selecting between supply sources when in Bypass.



Use

Normal Position:

- The load is supplied by the supply source defined as the preferred source. In case of primary source failure, the ATS automatically transfers the load to the alternate source when available.

Bypass position:

- ATS seamless transfer to the Bypass mode is achieved using the bypass line via Q1 to ensure continuity in the power supply to the load. Changeover switch Q2 is then open to provide complete isolation from the power supply sources and to ensure safe interventions.

Test Position:

- From the Bypass position, changeover switch Q2 can be closed to supply the ATS and achieve operational checks, without jeopardizing the supply to the load. Transfer to the normal position can then be achieved.

References

Standard product - 230 VAC for ATyS p M

Rating (A)	No. of poles	Single Line Reference ⁽¹⁾	Double Line Reference ⁽¹⁾
40	4P	1785 4004N	1786 4004N
63	4P	1785 4006N	1786 4006N
80	4P	1785 4008N	1786 4008N
100	4P	1785 4010N	1786 4010N
125	4P	1785 4012N	1786 4012N

Standard product - 230 VAC for ATyS P

Rating (A)	No. of poles	Single Line Reference ⁽¹⁾	Double Line Reference ⁽¹⁾
160	4P	1785 4016N	1786 4016N
250	4P	1785 4025N	1786 4025N
400	4P	1785 4040N	1786 4040N
630	4P	1785 4063N	1786 4063N

(1) Network 127/230 VAC, on request.

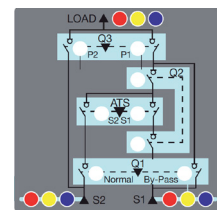
(2) Above 630A contact NHP for ordering details

Signalling

Use

To see a global overview of the system status, an optional 16 LED mimic panel is available (voltage availability per phase and device positions).

Description	Mimic panel	
	Single line reference	Double line reference
40 ... 630	1599 9033	1599 9034



Remote ATS Bypass management using Ethernet

Use

A serial RS485 connection with MODBUS protocol is factory fitted. An optional module can be integrated to enable communication through Ethernet for the following functions:

- Alarm management (SNMP protocol),
- Remote control / Data logging,
- Consultation through embedded website.

Description	Reference
Remote control module	4899 0400



**NHP Electrical Engineering
Products Pty Ltd**

A.B.N. 84 004 304 812

NHP85367 07/18
© Copyright NHP 2018

AUSTRALIA

nhp.com.au

SALES 1300 NHP NHP

sales@nhp.com.au

NEW ZEALAND

nhp-nz.com

SALES 0800 NHP NHP

sales@nhp-nz.com