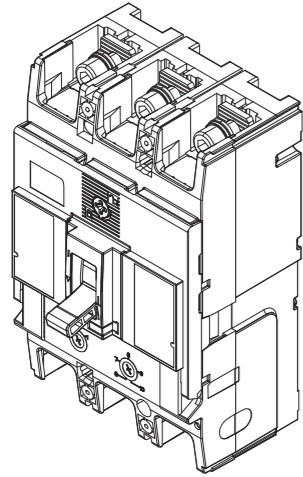


INSTALLATION INSTRUCTIONS MOULDED CASE CIRCUIT BREAKERS TEMBREAK PRO P250 3P THERMAL MAGNETIC



NHP Electrical Engineering Products Pty Ltd
A.B.N. 84 004 304 812
AUS 1300 NHP NHP | nhp.com.au
NZ 0800 NHP NHP | nhp-nz.com

TOOLS REQUIRED (NOT included)

T1 Screwdriver Flathead (5mm) T2 Screwdriver Phillips (#2) T3 17mm Socket wrench T4 6mm Allen key Socket wrench T5 17mm Ring Spanner

HARDWARE (included)

A M8x20 Socket screw (6 qty) B M8 spring washer (6 qty) C M8 flat washer (6 qty) D M4x55 mounting screws (2 qty) E Interpole Barriers (2 qty) Instruction Manual (This Document) (1 qty)

HARDWARE (NOT included)

F Lugs or Copper Bars G *M10x25 hex bolt (6 qty) H *M10 flat washer (6 qty) I *M10 Belleville washer (6 qty) J *M10 nut (6 qty)
*For extension bar connection only

OPTIONAL (NOT included)

K Extension Bars L Terminal Covers M Terminal Cover Lock N Handle Lock Internal Accessories

MOUNTING ANGLES

MOUNTING

TORQUE 1.3 - 1.7 Nm

DIMENSIONS

CLEARANCE

BR₁, BR₂ = Adjacent MCCBs

MCCB Cat No.	Y min (mm)	Z min (mm)
P250F	0	25
P250N	0	25
P250H	0	25

BR₁, BR₂ = Adjacent Isolators / MCCBs

MCCB Cat No.	W* min (mm)	X ₁ min (mm)	X ₂ min (mm)
P250F	50	40	30
P250N	80	80	30
P250H	80	80	30

OPERATING INSTRUCTIONS

Operation	Force (Nm)
OFF → ON	55
ON → OFF	40
TRIP → OFF	65

DIRECTION OF POWER SUPPLY

INTERNAL ACCESSORIES ASSEMBLY PROCEDURE*

STEP 1 TRIP MCCB

STEP 2 OPEN COVER

STEP 3 IDENTIFY TRIP BAR & MECHANISM

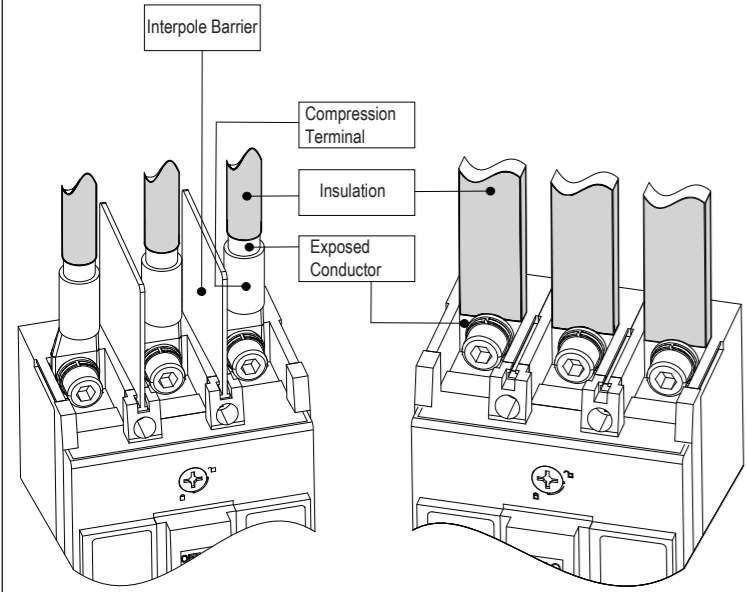
STEP 4.1 SHUNT INSTALLATION

STEP 4.2 ALARM INSTALLATION

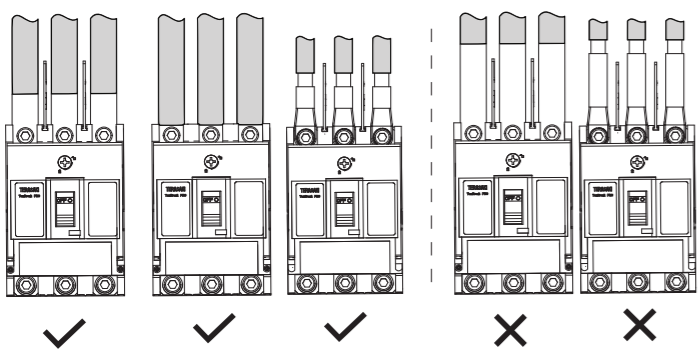
STEP 5 CLOSE MCCB COVER

*For additional internal accessory installations, scan QR code and refer to user manual for more details

TOPSIDE INSULATION RECOMMENDATIONS – 415 / 440V AC

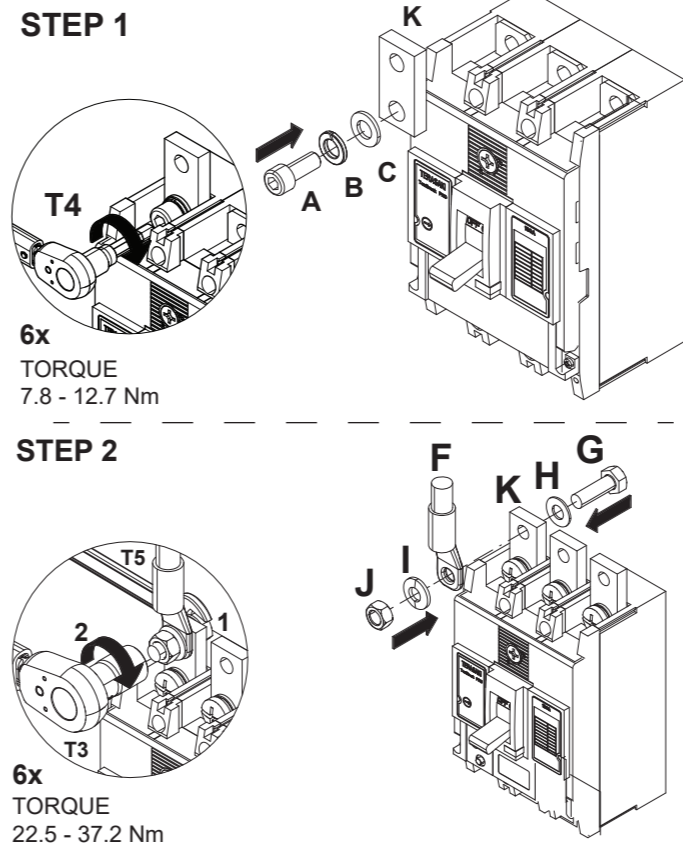
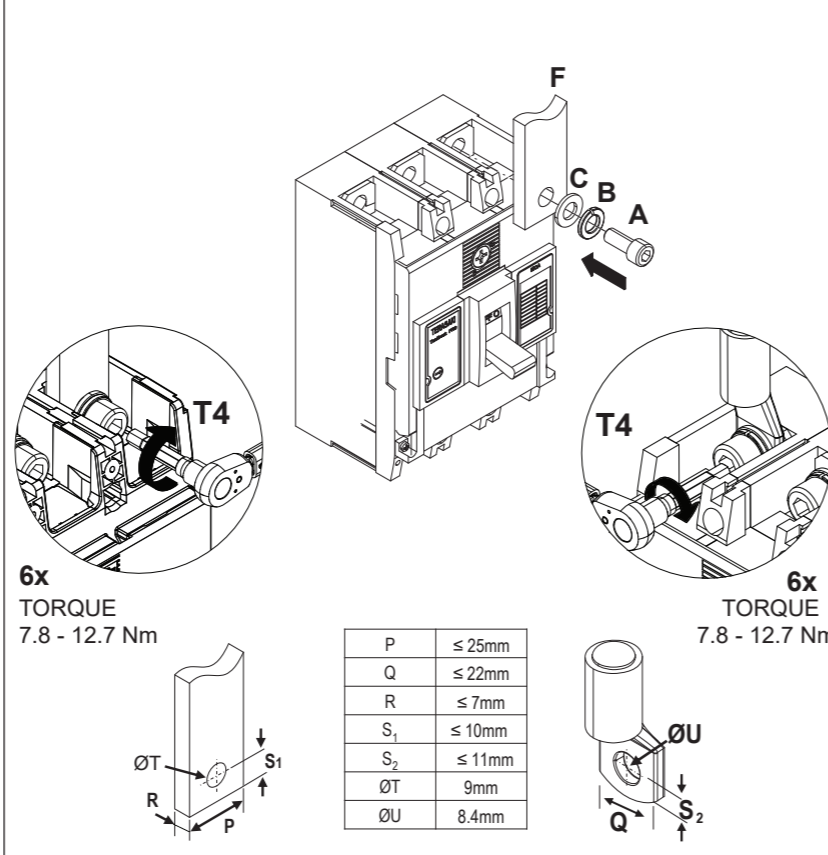


NOTE: Insulate the exposed conductor to achieve IP2X or protect from finger access.

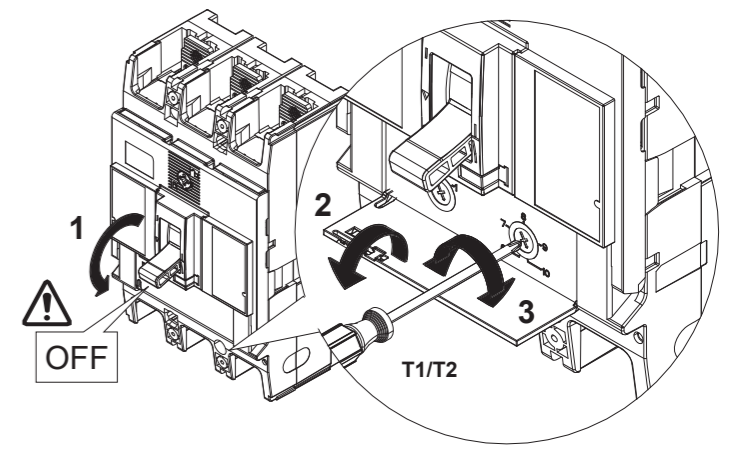


CONDUCTOR CONNECTION PROCEDURE -- FRONT CONNECTION -- EXTENSION BAR CONNECTION PROCEDURE

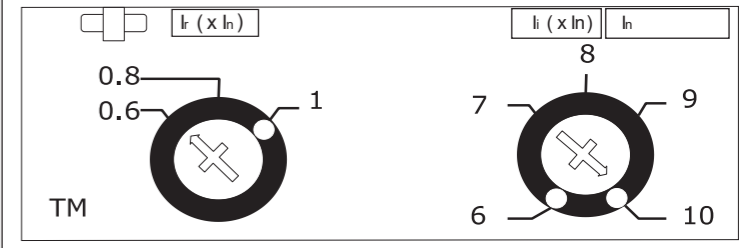
A	M8x20 Socket screw	F	Lug or copper bar	I	M10 Belleville washer
B	M8 Spring washer	G	M10x25 hex bolt	J	M10 Nut
C	M8 Flat washer	H	M10 Flat washer	K	Extension Bar



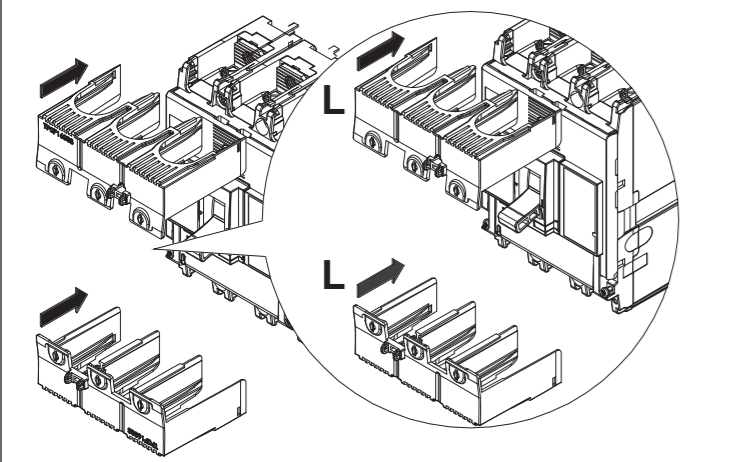
TRIP UNIT ADJUSTMENT PROCEDURE



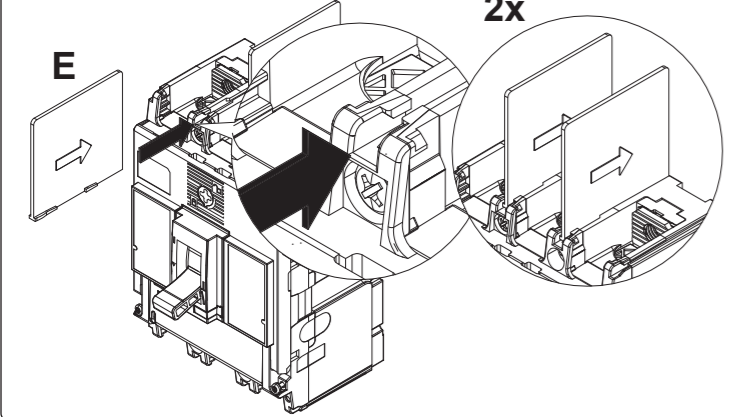
Protection Settings		
I _n (A)	I _r (A)	I _i (A)
50,63,100,125,160	0.63 - 1.0	6 - 8 - 10 - 13
200	0.63 - 1.0	6 - 8 - 10 - 12
250	0.63 - 1.0	6 - 7 - 8 - 9 - 10



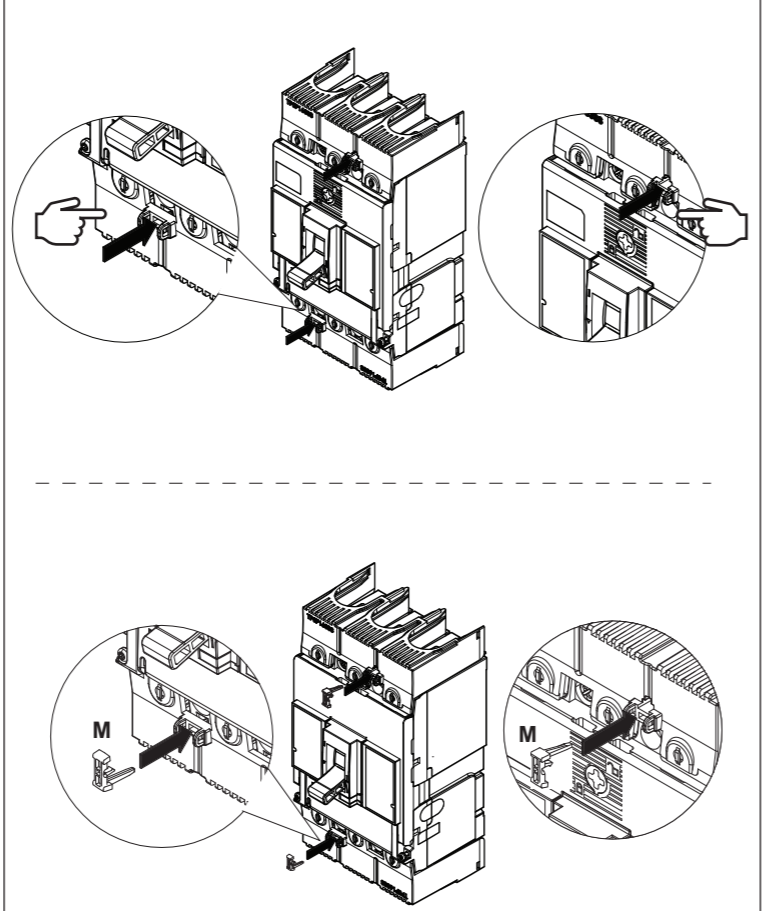
TERMINAL COVER



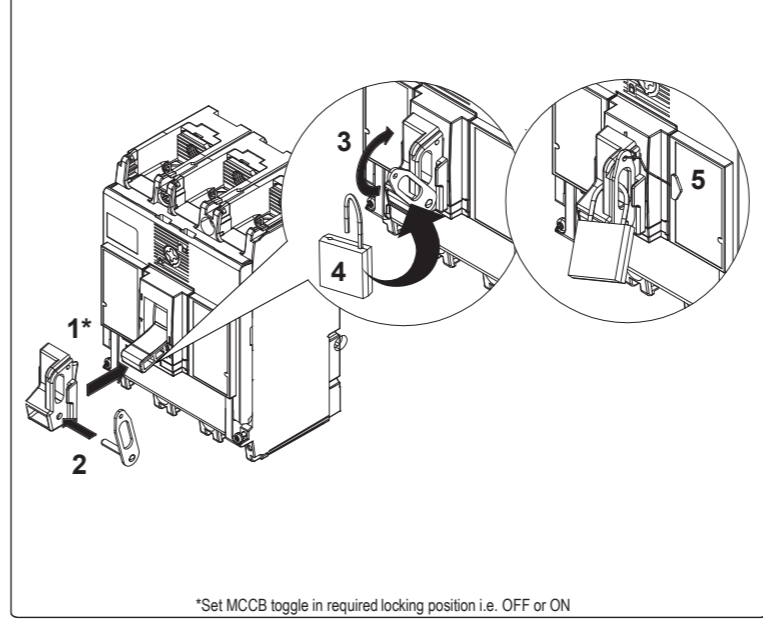
INTERPOLE BARRIER



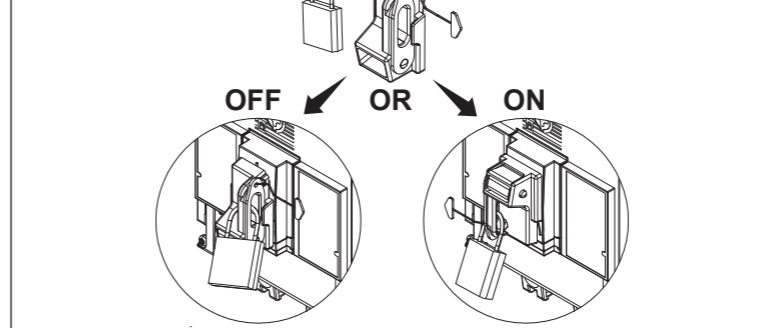
TERMINAL COVER LOCK



TOGGLE LOCK / PADLOCK ASSEMBLY PROCEDURE



TOGGLE LOCK OPTION



TIME CURRENT CHARACTERISTIC CURVE

