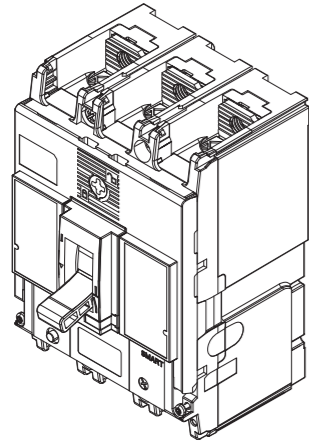


INSTALLATION INSTRUCTIONS MOULDED CASE CIRCUIT BREAKERS TEMBREAK PRO P160 3P SMART ELECTRONIC



NHP Electrical Engineering Products Pty Ltd
A.B.N. 84 004 304 812
AUS 1300 NHP NHP | nhp.com.au
NZ 0800 NHP NHP | nhp-nz.com

TOOLS REQUIRED (NOT included)

- T1 Screwdriver Flathead (5mm)
- T2 Screwdriver Phillips (#2)
- T3 13mm Socket wrench
- T4 13mm Ring Spanner

HARDWARE (included)

- A M8x16 Slotted Philips screw (6 qty)
- B M8 spring washer (6 qty)
- C M8 flat washer (6 qty)
- D M4x62 mounting screws (2 qty)
- E Interpole Barriers (2 qty)
- Instruction Manual (This Document) (1 qty)

HARDWARE (NOT included)

- F Lugs or Copper Bars
- G *M8x25 hex bolt (6 qty)
- H *M8 flat washer (6 qty)
- I *M8 Belleville washer (6 qty)
- J *M8 nut (6 qty)

*For extension bar connection only

OPTIONAL (NOT included)

- K Extension Bars
- L Terminal Covers
- M Terminal Cover Lock
- N Handle Lock
- Internal Accessories

MOUNTING ANGLES

MOUNTING

TORQUE 1.3-1.7 Nm

DIMENSIONS

CLEARANCE

MCCB Cat No.	Y min (mm)	Z min (mm)
P160F	0	25
P160N	0	25
P160H	0	25

BR₁, BR₂ = Adjacent Isolators / MCCBs

CLEARANCE

INSULATION PLATE, TOP PLATE (EARTHED METAL)

BR₁, BR₂ = Adjacent MCCBs

*distance from conductor insulation to downstream MCCB

MCCB Cat No.	W* min (mm)	X ₁ min (mm)	X ₂ min (mm)
P160F	50	10	10
P160N	75	45	25
P160H	75	45	25

P160_3_SE-IN-001-EN V1.0.0

OPERATING INSTRUCTIONS

Operation	Force (Nm)
OFF → ON	40
ON → OFF	30
TRIP → OFF	60

DIRECTION OF POWER SUPPLY

OR

INTERNAL ACCESSORIES ASSEMBLY PROCEDURE*

STEP 1 TRIP MCCB

STEP 2 OPEN COVER

STEP 3 IDENTIFY TRIP BAR & MECHANISM

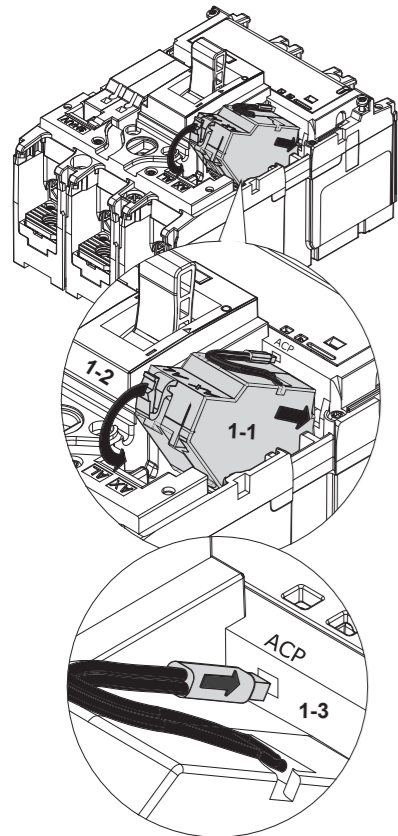
STEP 4.1 UVT/SHUNT INSTALLATION

STEP 4.2 ALARM INSTALLATION

STEP 5 CLOSE MCCB COVER

*For additional internal accessory installations, scan QR code and refer to user manual for more details

SMART AX/AL INSTALLATION PROCEDURE

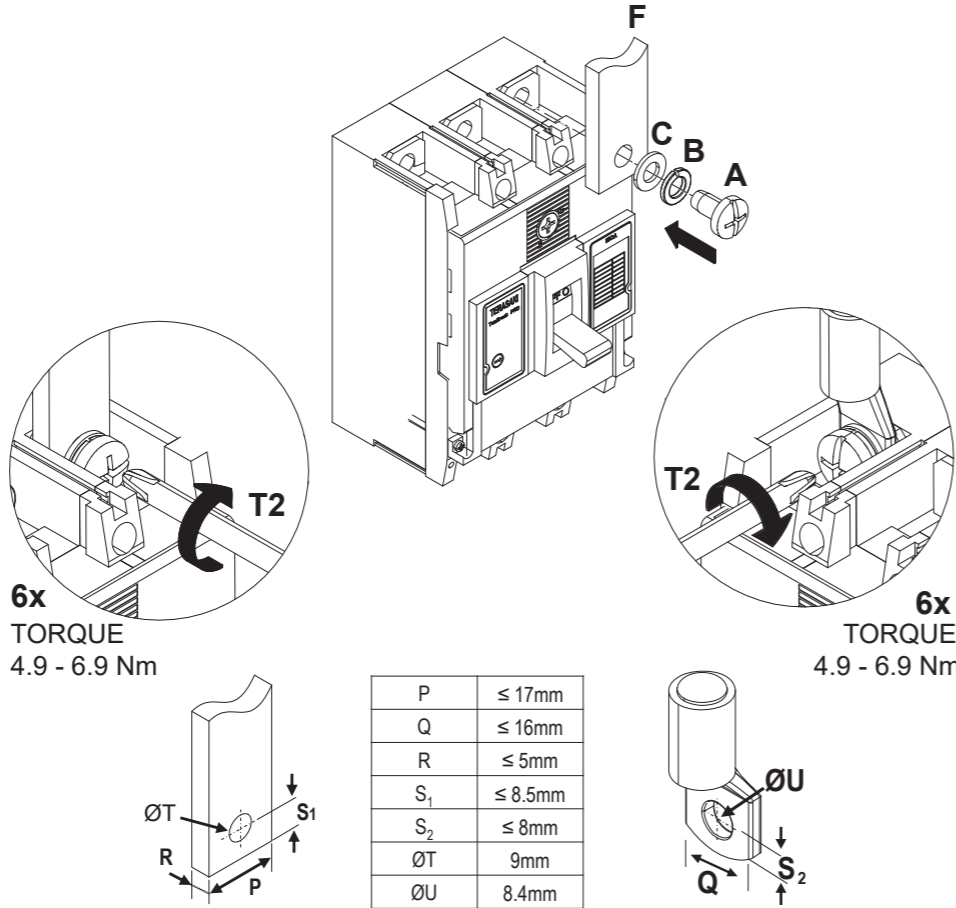


NOTE: SMART type AX/AL can only be installed in the LH side accessories chamber as shown above.

Follow steps 1,2 and 5 of 'Internal Accessories Mounting Procedure' to access and close the internal accessories chambers.

A	M8x16 Phillips screw	H	M8 Flat washer
B	M8 Spring washer	I	M8 Belleville Washer
C	M8 Flat washer	J	M8 Nut
F	Lug or copper bar		Extension Bar
G	M8x25 hex bolt		

CONDUCTOR CONNECTION PROCEDURE -- FRONT CONNECTION -- EXTENSION BAR CONNECTION PROCEDURE



STEP 1

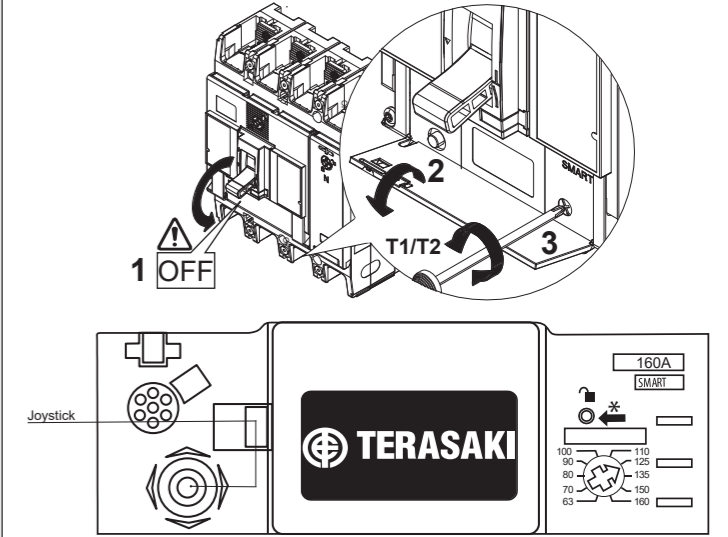
6x TORQUE
4.9 - 6.9 Nm

STEP 2

6x TORQUE
11.8 - 18.6 Nm

P	≤ 17mm
Q	≤ 16mm
R	≤ 5mm
S ₁	≤ 8.5mm
S ₂	≤ 8mm
ØT	9mm
ØU	8.4mm

TRIP UNIT ADJUSTMENT PROCEDURE



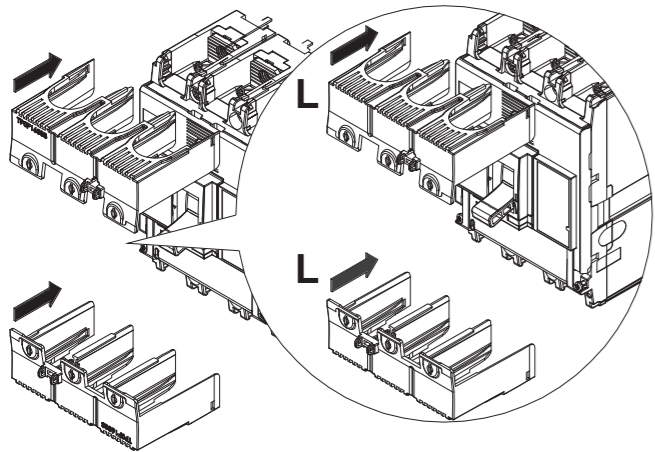
NAVIGATION

- Adjust 'lr' dial for desired rated current
- To navigate between main menus, move joystick left or right
- To navigate within a submenu, move joystick up or down
- To confirm a setting change, press in the joystick

Protection	Measurement	Configuration	Information
DISPLAY ORIENTATION	STANDBY MODE	SCREEN BRIGHTNESS	

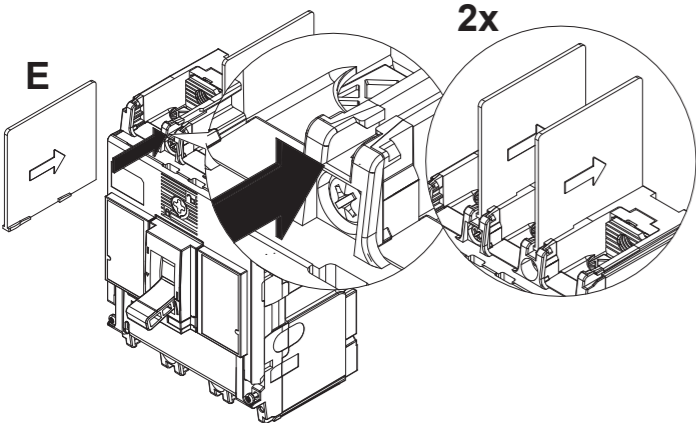
*by default, the SMART OCR Protection settings are protected via a locking function, to unlock, please press the unlock button
FOR MORE INFORMATION, PLEASE SCAN THE QR CODE

TERMINAL COVER

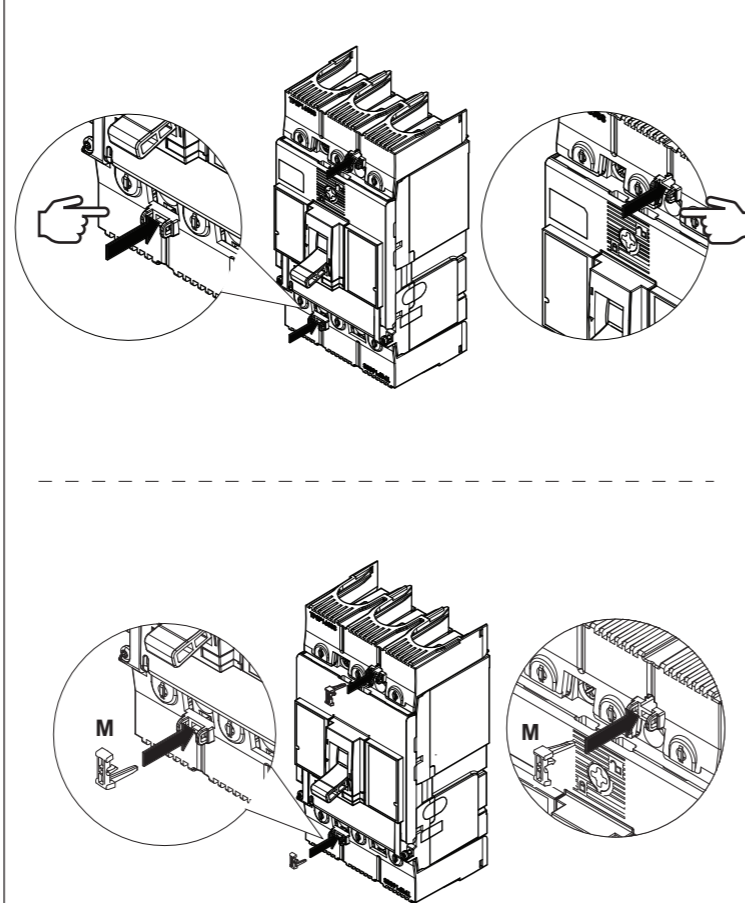


OR

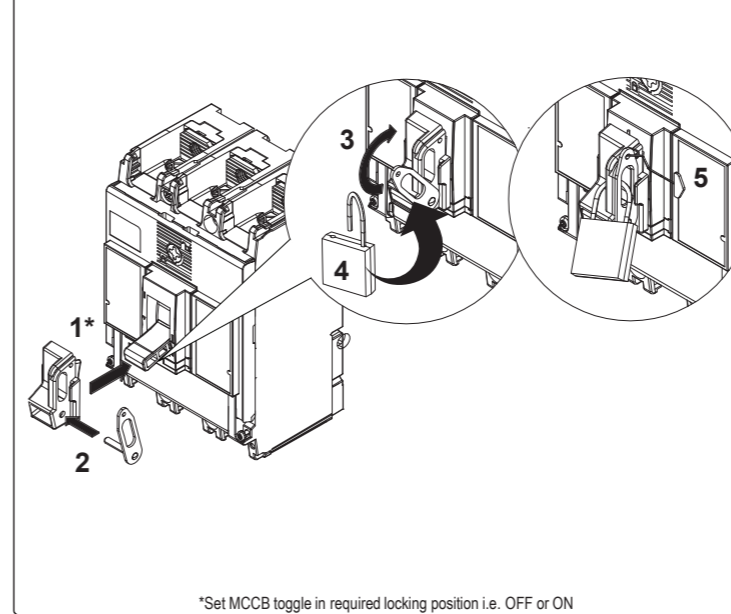
INTERPOLE BARRIER



TERMINAL COVER LOCK

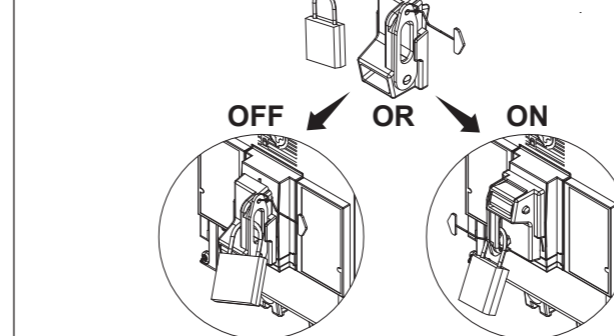


TOGGLE LOCK / PADLOCK ASSEMBLY PROCEDURE

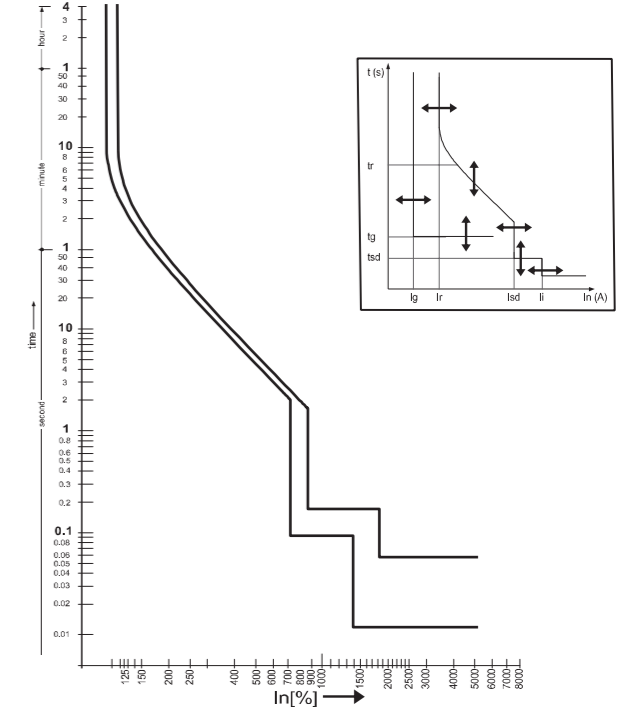


*Set MCCB toggle in required locking position i.e. OFF or ON

TOGGLE LOCK OPTION



TIME CURRENT CHARACTERISTIC CURVE



	Threshold Adjustment	Time Setting
Long-time protection	(lr)	(tr)
Short-time protection	(lsd)	(tsd) (lt)
Instant protection	(li)	
Protecting Earth	(lg)	(tg) (lt)
Neutral protection	(N)	

NOTE: The protection menu consists of sub-menus to view and edit each OCR protection setting